

# EVOLUTION IN THE INTELLECTUAL STRUCTURE OF BIM RESEARCH: A BIBLIOMETRIC ANALYSIS

Timothy O. OLAWUMI<sup>a\*</sup>, Daniel W.M. CHAN<sup>a</sup>, Johnny K.W. WONG<sup>b</sup>

<sup>a</sup> *Department of Building and Real Estate, Faculty of Construction and Environment, The Hong Kong Polytechnic University, Hung Hom, Kowloon, Hong Kong*

<sup>b</sup> *School of Built Environment, Faculty of Design, Architecture and Building, University of Technology Sydney, Sydney, Australia*

*E-mail: timothy.o.olawumi@connect.polyu.hk (corresponding author)\**

Received 29 March 2017; Accepted 14 July 2017.<sup>1</sup>

**Abstract.** Building Information Modelling (BIM) processes have continued to gain relevance in the Architectural, Engineering, and Construction (AEC) industry with more resources directed toward it. This study conducts a bibliometric analysis of 445 BIM articles to investigate and understand the pattern of BIM research which include defining BIM research categories, evaluating the project sectors that are influenced by BIM, and tracking the funding structure of BIM research. A network map that displays a visualization of the structure of BIM literature by research origin, funding structure and geographical scope was designed. None of the previous reviews of literature analyzed the BIM articles' corpus to such level and depth. The findings revealed research categories such as construction and project management and BIM learning, adoption & practice as the core research areas in BIM and highlighted trending research themes in BIM research. Authors based in Asia and Europe received more research grants than their counterparts in other regions; likewise, two-third of the articles were authored by academics in the United States, Korea, and the United Kingdom. The study provides its readers with relevant research areas that require considerations, and the discussion of selected research areas provide an extensive understanding of salient BIM fields.

**Keywords:** Building Information Modelling (BIM), Bibliometric Analysis, Funding structure, Project sectors, Research areas, BIM software

## Introduction

Building Information Modelling (BIM) is currently receiving worldwide recognition in the AEC industry due to its ability to store and also ease the use and reuse of project data across the project development phases; while also preventing unnecessary replication of project or design tasks (Kovacic et al. 2015; Kim et al. 2013; Lee, Yu 2016; Sun, Wang 2015). However, BIM is a revolving and innovative digital technology (Mahalingam et al. 2015; Malekitabar et al. 2016; Succar, Kassem 2015); with recent applications in areas such as sustainability (Ajayi et al. 2015; Liu et al. 2015) and facility management (Motamedi et al. 2013); despite the fragmented nature of the construction industry.

Meanwhile, BIM has started to receive more attention in the academic community with several research papers on BIM. It include articles on the development of BIM curriculum for university undergraduate students. Related works on BIM curriculum development including literature such as “*course development and collaborative teaching*” (see Ahn et al. 2013; Becerik-Gerber, Kensek 2010; Becerik-Gerber et al. 2012; Kim 2012; Sacks, Barak 2010; Wang, Leite 2014; Wu, Issa 2014). It also includes “*evaluating BIM curriculum vis-à-vis industrial needs*” (Aibinu, Venkatesh 2014; Solnosky et al. 2014) and “*in-class experimentation with BIM tools*” (Lewis et al. 2015; Nassar 2012) among many other related topics.

BIM per Eastman et al. (2008) is “a new approach to design, construction, and facilities management, in which a digital representation of the building process [is used] to facilitate the exchange and interoperability of information in digital format.” Gilkinson et al. (2015) regarded it as both constituting a process and technology. It is an innovative solution with much to be explored; they further stressed that since it ensured a “coordinated integrated process”; it is a useful tool for all project stakeholders as they could found it fit and suitable for their jobs due to its diverse nature (Olawumi, Ayegun 2016), and the collaborative outlook of the construction industry (Olatunji et al. 2016; Olatunji et al. 2016), despite the increasing complexity of construction projects (Olatunji et al. 2017). Olatunji et al. (2017) listed one of the benefits of BIM as an increase in return on investment (ROI) for clients; and to “*facilitate the ease of dissemination of information*” and this, in turn, helps to secure project success (Olawumi 2016; Olawumi et al. 2016). Also, related technological tools such as augmented reality (AR) system and Geographic Information System (GIS) have also been integrated into the BIM process to facilitate the visualization of the construction process.

<sup>1</sup> **To cite this article:** Timothy O. Olawumi, Daniel W. M. Chan & Johnny K. W. Wong (2017). Evolution in the intellectual structure of BIM research: a bibliometric analysis, Journal of Civil Engineering and Management, 23:8, 1060-1081, DOI: 10.3846/13923730.2017.1374301

## 1.0 Knowledge Gap and Research Objectives and Value

Previous studies on reviews of BIM literature have focused on specific research areas or themes such as facility management (Becerik-Gerber et al. 2012; Kang, Hong 2015; Wetzel, Thabet 2015), environmental sustainability (Wong, Zhou 2015). Studies have outlined the current practices and future directions via various research approaches such as surveys, critical literature reviews, and interviews (Azhar 2011; Gu, London 2010; Volk et al. 2014). More so, researchers have carried out reviews and analyses on BIM which include contractors' blueprint to adopt BIM (Ahn et al. 2016); e-tendering process model (Ajam et al. 2010); waste management (Ajayi et al. 2015; Akinade et al. 2015); education and knowledge (Ahn et al. 2013; Alci, Sampaio 2015). Others include: social network simulation, cloud-BIM and technology adoptions (Al Hattab et al. 2015; Alreshidi et al. 2016; Arayici et al. 2011; Becerik-Gerber et al. 2012; Becerik-Gerber, Kensek 2010; Chen, Hou 2014; Choi, Kim 2015; Davies, Harty 2013; Du et al. 2014).

Extant studies also exist on BIM-GIS integration (Bansal 2011; Borrmann et al. 2015; Deng et al. 2016) and sustainability (Bynum et al. 2013; Henry et al. 2015; Inyim et al. 2015). However, in recent years (2015 – 2017) there have been literature reviews (see Table 1 & Table 2) on BIM research field such as Yalcinkaya and Singh (2015), who reviewed BIM literature to deduce twelve (12) BIM core research areas and ninety (90) factor labels using Latent Semantic Analysis (LSA) described as a “natural language processing technique”; which was used to analyze the abstracts of the journal articles. Meanwhile, Zhao (2017) used a computer software “Citespace” to examine citation records downloaded from the Web of Science database to identify authors with the most citations and co-citations and the “hot topics” in BIM research areas with the most citations. More so, Santos et al. (2017) review of the extant literature focused on identifying research areas with the most citations and the most cited authors. Accordingly, he also proposed nine (9) research areas in BIM field. Table 1 and Table 2 identifies and summarize what is new in this current study and compares it with previous published reviews of BIM literature.

Moreover, previous BIM reviews focused mostly on authors and journals' citations analyses, this study attempts to bridge the gap in the reviews of extant literature and add value to BIM knowledge area. This study proposes the following objectives: (1) to carry out an holistic review of BIM journal articles (as against abstracts' review by Yalcinkaya and Singh (2015) and citations records by Zhao (2017)); (2) to define the subfields that constitute the intellectual structure of BIM research fields (core research categories and areas); (3) to identify funding (grants) structure for BIM research based on country (research origin) analysis and research category analysis; (4) to identify and establish the network of BIM publication by research origin and geographical scope; (5) to identify the salient research methodology employed in past BIM studies; (6) to identify relevant BIM software, data schema, and project areas for BIM application; and (7) to classify BIM publications based on project sectors they are applied to (such as energy, transportation, etc.).

Meanwhile, throughout the bibliometric analysis and the literature reviews, the study would adopt a more systematical and analytical approach in achieving the seven (7) objectives of this study. A wide range of publication will be analyzed across several journal publication houses. The next section focuses on a discussion of the research methodology applied (bibliometric analysis) and the literature search strategy. Other sections focus on (i) the findings and discussion of the results of the bibliometric analysis, (ii) discussion on the proposed core BIM research categories and areas, (iii) the research implications (iv) and research limitations and (v) the conclusion and future directions.

## 2.0 Research Methodology

The study adopted a bibliometric analysis technique to achieve the predefined research objectives of which is to articulate the distinct set of the main research categories in BIM's research to gain a better perspective and identify critical areas in which more research efforts is still been required. Per Marsilio et al. (2016) bibliometric research approach is an “*attempt(s) to quantify and address the intellectual structure of a research field starting from the mathematical and statistical analysis of patterns that appear in the publication and use of documents.*” Meanwhile, this analysis technique has been utilized in some research publications both in the science and management research fields (see Neto et al. 2016; Marsilio et al. 2016; Ramos-Rodriguez, Ruiz-Navarro 2004).

This research aims to bridge the gap in the BIM literature by applying the bibliometric technique to a corpus of published articles relevant to this disciplinary field towards achieving the predefined objectives as stated in the previous section. The research design for this study is as outlined in Figure 1.

### 2.1 Literature Search Strategy

In commencing the bibliometric analysis, a decision as to which scientific repository to use was made; there are several academic digital databases, but the three most commonly utilized for scientific inquiries include Google Scholar, ISI Web of Science and Scopus. Although there is no clear difference in Scopus and Web of Science databases as it pertains to science-based publications, however, there is a considerable overlap in their records. Moreover, Google Scholar seems to have a more extensive collection of publications than both Scopus and Web of Science. However, Google

Scholar is noted to contain many incorrect publication attributions- as an author with the same first initial and last name may be attributed more citations. Also, Google Scholar also has another minor problem with indexing of articles, as it counts all conference abstracts which has nothing to do with citations, thereby increasing the numbers of papers very dramatically.

However, for this study, a comprehensive search as detailed in *Figure 2* was carried using the ISI Web of Science database because of its “*comprehensiveness, organized structure and scientific robustness*” (Neto et al. 2016). Marsilio et al. (2011) also argued that it is the “*most commonly used and generally accepted source for bibliometric studies.*” The search keywords are: “*Building Information Modelling,*” “*BIM*” and “*Building Information Modeling.*”

The selected time span is between 1990 and 2016 equivalent to 26 years. The research corpus only comprises of articles published in a journal instead of a doctoral thesis (*since most of them are afterward published in journals*), books or conference papers. Moreover, authors do publish their work in scholarly journals (Rowlands et al. 2004) because they are classified as “certified knowledge” (Ramos-Rodríguez, Ruíz-Navarro 2004) and have gone through a peer-review process. The search results gave 567 journal articles. However, 122 papers were excluded from further analysis as they fail to meet the inclusion criteria (*see Table 3*) due to several reasons such as abstracts written in a language other than English (*12 articles*). We also have three articles with no abstracts and 107 articles found to be unrelated to research (such as papers that only refer to BIM but cannot be related to any of the categorized research areas). A total 445 articles which were downloaded in Mendeley Desktop (*reference manager*) and indexed in the Microsoft Excel program. The indexed articles consisted of 316 case studies papers, 47 surveys/interviews articles, and 82 articles which utilized mixed method research approach.

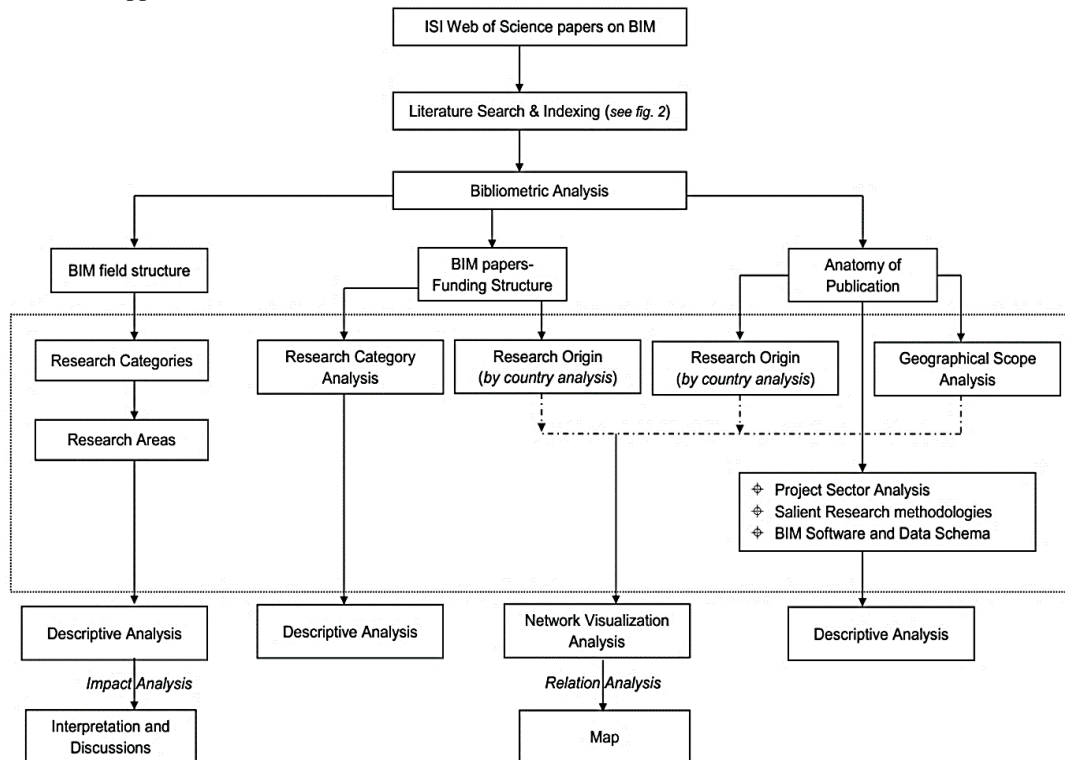


Figure 1: Outline of Research Design

Table 1: Summary of Recent BIM Literature Reviews

Paper	Number of journals analyzed	Number of papers analyzed	Period of analysis	Proposed research categories ( <i>research areas</i> )	Research areas	Type of literature review	Scope/Focus of analysis
Wong and Zhou (2015)	9	84	2004 – 2014	4 (none)	– Green-BIM – Sustainability	No bibliometric	Each journal paper' sections
Yalcinkaya and Singh (2015)	Only Top 20 journal listed	– 525 journal articles – 450 conference papers	2004 - 2014	12 (90)	BIM	Latent Semantic Analysis (LSA)	Abstracts
Zhao (2017)	-	614	2005 - 2016	-	BIM	Scientometric review	Citation records only – Co-author analysis – Co-word analysis – Co-citation analysis – Co-occurring keywords
Santos et al. (2017)	49	381	2005 -2015	9	BIM	Content analysis	Each journal paper' sections
Current study	62	445	2006 - 2016	10 (107)	– BIM – Review of sustainability studies	Bibliometric analysis	Each journal paper' sections

Table 2: Comparison between previous BIM Literature Reviews' Findings and the Current study

Paper	Database used	Contribution to Existing Knowledge
Wong and Zhou (2015)	Scopus	<ul style="list-style-type: none"> <li>– Provided a summary of research focus of green-BIM publications</li> <li>– Identified the low utilization of BIM in facility management phase</li> <li>– Proposed a ‘one-stop-shop’ BIM for environmental sustainability monitoring</li> </ul>
Yalcinkaya and Singh (2015)	Several databases like Elsevier, ProQuest, Emerald, EBSCO, etc.	<ul style="list-style-type: none"> <li>– Identified 12 core BIM research areas</li> <li>– Identified 90 BIM factor labels or keywords.</li> </ul>
Zhao (2017)	Web of Science	<ul style="list-style-type: none"> <li>– Identified ten (10) co-citations clusters</li> <li>– Identified 7 hot topics in BIM research</li> <li>– Identified 5 research areas with most citations</li> </ul>
Santos et al. (2017)	Web of Science and other unlisted databases	<ul style="list-style-type: none"> <li>– Proposed 9 research categories</li> <li>– Identified research areas and journals with most citations</li> <li>– Identified current trends in BIM</li> </ul>
Current study	Web of Science	<ul style="list-style-type: none"> <li>– Identify funding (grants) structure for BIM research (<i>country analysis and research category analysis</i>)</li> <li>– Identify the salient research methodology employed in past BIM researches</li> <li>– Identify the network of BIM publication by research origin and geographical scope</li> <li>– Propose a much concise and precise core research category (10) and areas (107)</li> <li>– Identify relevant BIM software, data schema, and project areas for BIM application</li> <li>– Classify BIM publications based on project sectors they focused on (such as energy, transportation, etc.)</li> </ul>

Table 3: Indexed Corpus Profile

Profile	Number of Papers	Percentage (%)
Total publications in web of science	567	100
Abstracts which are written in languages other than English	12	2.12
Papers excluded for not having abstracts	3	0.53
Papers excluded for being registered twice	0	0
Papers excluded for not being related to the research area/topic	107	18.87
Total papers excluded before analysis	122	21.52
Total papers to be analyzed for this guided study research	445	78.48

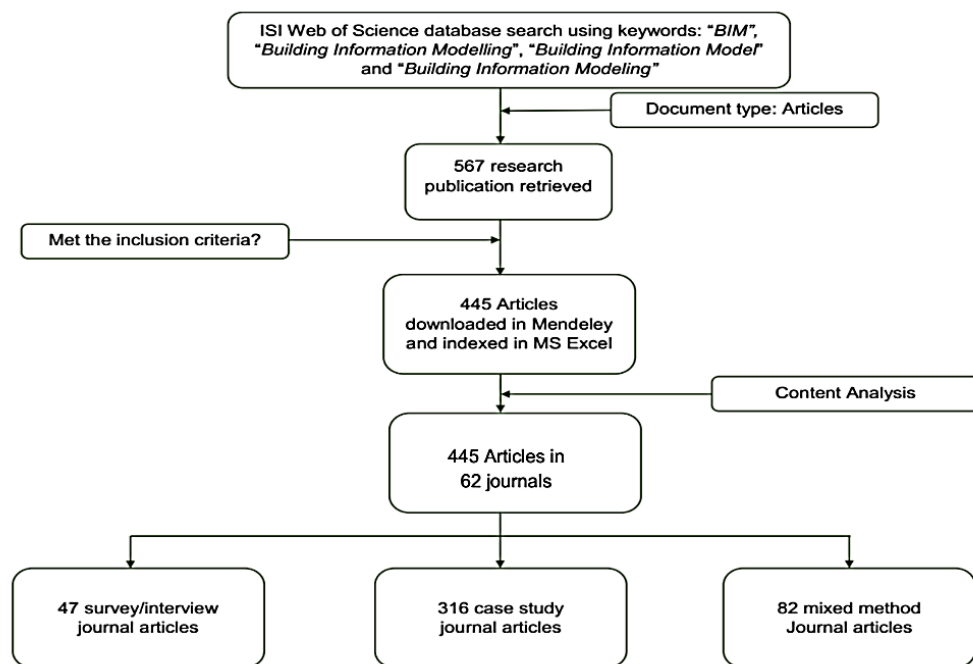


Figure 2: Literature search &amp; indexing approach

### 3.0 Bibliometric Analysis

This section discusses the facets and results of this study of bibliometric analysis. These include (i) descriptive analysis of published research in BIM (ii) defining the BIM subfields and research areas (iii) BIM funding structure, and (iv) the anatomy of the BIM publications as outlined in this study research design.

#### 3.1 Published Research in BIM

The volume of published research in BIM has notably increased in recent years (Santos et al. 2017); since it has emerged as a key, and innovative approach to construction and civil engineering (Yalcinkaya, Singh 2015) and these studies covers diverse areas including several technical and non-technical issues (Zhao 2017). More so, in the last four years, more than 75 percent of BIM articles were published.

The literature used in this bibliometric analysis are journal articles, and all but one of the journal has no impact factor (IF). The analysis of the journals reveals that 36 out of the 62 journals (58 per cent) has an impact factor (IF) greater than 1.000 while 16 journals have IF value between 0.500 and 0.999 representing 26 per cent and the rest of 9 journals are below 0.500 IF value. Meanwhile, an analysis of BIM publishing journals reveals several concepts and issues

revolving around the BIM research field; also 32 out of the 62 journals (52 per cent) published just one article. More so, another cluster of 20 journals published between 2 and 6 papers; meanwhile, there is another group of ten (10) journals whose number of published articles on BIM is 10 articles or more (see Table 4).

The structure of the published research on BIM closely followed the “Pareto-principle” also known as the 80/20 rule (Brynjolfsson et al. 2011; Pareto 1964). In this study, it follows that 349 articles (78.4 percent) are published in just 10 journals (16 per cent) which can be termed a 78/16 rule which aligns with the Pareto postulation; the average impact factor for the 10 journals whose publications followed the Pareto principles is 1.568. More so, from year 2012 to date the number of published articles on BIM have significantly increased with more volumes of articles coming from journals such as “Automation in Construction”, “Advanced Engineering Informatics”, and “Journal of Computing in Civil Engineering”.

### 3.2 BIM Sub-fields and Research Areas

The next stage in the bibliometric analysis is to define the BIM sub-fields (research categories and research areas). We identify ten (10) research categories namely “IT-enabled simulations and visualization”; “building design and energy conformance”; “BIM software & data schema”; “BIM model development”; “BIM learning, adoption & practice”; “construction and project management”; “safety and risk management”; “facility management”; “sustainability-related studies”; and “literature review” (see Table 5).

The establishment of the semantic link and classification of the published works to the ten (10) research categories was based on a directed content analysis approach using articles keywords, titles, scope covered and the research findings. Meanwhile, further clustering of the articles enables us to define one hundred and ten (107) research areas/themes based on the ten research categories. The analysis of the research categories reveals a prevalent of publication in aspects such as “construction and project management” with 78 articles; “BIM learning, adoption & practice” with 70 articles; and “building design and energy conformance” with 65 articles which sums up close to fifty (50) percent of all published works in BIM. The defined category in this study is more concise and specific than previous studies, although there is a partial overlap when compared with those provided by previous authors (Yalcinkaya, Singh 2015; Zhao 2017).

Furthermore, for the research areas, one hundred and ten (107) themes were identified (see Table 6) through an iterative process whereby identified themes are grouped in a cluster under each research category. After the loading of the research themes into the research categories, three research areas- “construction and project management” with 18 themes, “facility management” with 17 themes and “BIM model development” with 16 themes are the most represented research areas. It can be deduced from the analysis that BIM has found more application in research in construction and project management with more published articles and themes, this is because of diverse use in the construction industry (Zhao 2017); and the fact that more contractor has started making use of BIM (Fan et al. 2014). Further discussion on the research categories and areas are outlined in section 4 of this study.

### 3.3 BIM Publications’ Funding Structure

BIM disciplinary field is a technologically backed research area which requires researchers to experiment with, develop and interoperate various BIM software and tools of which many of them are only commercially available and expensive, hence this section attempts to investigate the funding arrangement used in the various journal articles.

The bibliometric analysis in this section focuses on reviewing the funding structure (i) based on research category analysis, and (ii) research origin analysis (author & co-authors’ affiliations). An analysis of the funding structure reveals a steady increase in the number of BIM research receiving some form of funding or grants to carry out the relevant studies (from 20 articles in 2011 to 67 articles in 2015); also, more than half (51 percent, #231 articles) received funding. Meanwhile, based on an analysis of the research categories which received more funding, we identified four (4) research categories which have more than thirty (30) funded articles, and these include: RC2- “Building design and Energy conformance” which 40 funded articles, RC6- “Construction and Project Management.” Others are RC3- “BIM Software & Data schema,” and RC4- “BIM model development” with 39, 35 and 32 funded articles respectively which represent more than 60 percent of the funded articles of all BIM research categories (see Table 7).

More so, the analysis of the funding structure of BIM publication (based on research origin analysis) was analyzed using a mapped network visualization technique as shown in Figure 3. The funding arrangement for any given article was based on the information provided by the author(s) in the acknowledgment section of the published paper. The format for the map network visualization analysis in Figure 3 is based on “Country (‘articles per research origin,’ ‘funded articles,’ ‘articles per geographical scope’).” Therefore, by “articles per research origin” we imply the number of articles published by the author(s) or co-author(s) affiliated with an institution based in that country. More so, the term “articles per geographical scope” implies the number of articles with originating data or case studies based in that country. A bibliometric analysis of public-private partnership (PPP) by Neto et al. (2016) also used the terms “research origin” and “geographical scope” to portray similar expressions.

For example, we have USA (147,45,118) - this imply that they are 147 BIM authors/co-author(s) from the United States based on the bibliometric analysis and 45 of their BIM articles were funded, while there are 118 articles with the research data (that is, case studies, questionnaire surveys or interviews, etc.) based solely in the United States. BIM articles from countries namely the Republic of Korea, the US and China, have more funded articles with 68, 45 and 17 articles than any other countries which represent a combined 56 percent of all funded articles. The funding of BIM projects in South Korea, and China has aided the adoption and implementation of BIM in the AEC industries of these two countries; also, BIM standards, guidelines and component families which are essential for successful BIM implementation have been developed in Korea (G-SEED) and Hong Kong (BEAM-Plus).

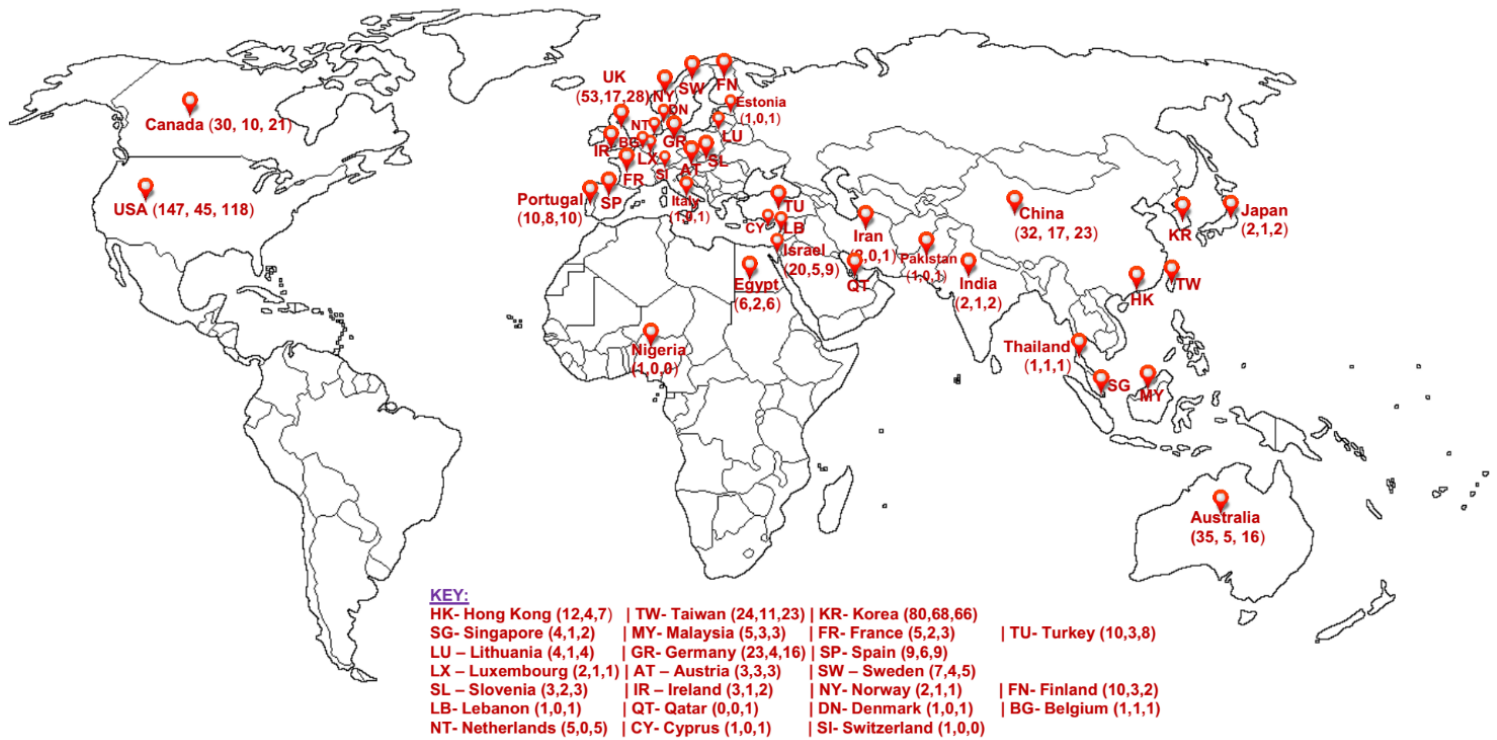


Figure 3: Map network visualization analysis (funding structure)

The relative high funding rate from the Republic of Korea is not far-fetched because as noted by Lee and Yu (2016), the Korean central government have strongly encouraged BIM usage and adoption via the promulgation of policies and funding through the National Research Foundation of Korea (NRF). Also, a recent study by Won et al. (2013) revealed a significant increase in the adoption rate in both USA and Korea.

### 3.4 Anatomy of BIM Publications

This section focuses on other aspects of the anatomy of the published BIM articles as depicted in the research design. The bibliometric analysis in this section focuses on (i) project sector analysis (ii) the salient research methodologies (iii) related BIM software and data schema.

#### 3.4.1 Project Sector Analysis

A bibliometric analysis of the corpus of BIM publications reveal a greater focus on the ‘building and housing sector’ of the built environment with a total of 347 BIM articles out of the overall 445 articles. BIM articles in the “*building and housing*” sector focuses on aspects such as “*single family houses*”, “*residential floors*”, “*parking garage*”, “*storey buildings*”, “*high-rise structures*”, “*building component and elements*”, “*sports centers*”, and “*educational buildings*” (see Table 8). A study by Chang and Lin (2016) reveals that BIM “*is currently being applied mostly to buildings*” with few applications elsewhere. Table 8 outlines the project sectors covered by the BIM publication corpus as deduced through this study’s bibliometric analysis; meanwhile, aspects covered by the articles under each project sectors were defined.



### **3.4.2 Salient Research Methodologies**

The bibliometric analysis of the articles' corpus in this section focus on defining the primary research design and approaches utilized by previous BIM authors. An analysis of the articles reveals that 316 articles out of 445 BIM articles (i.e. 71 percent) utilize the case study as the research method, this implies that BIM articles' authors prefer case study approaches in their studies. Basbagill et al. (2013) argued that case study research design is the best approach to introduce new concepts to industry practice and since BIM is still relatively new to the construction industry; and this can be adduced as the reasons behind the use of case studies for BIM researches.

More so, Davies and Harty (2013) believed case study research method does help to challenge fundamental misconceptions when applying innovative technologies to practice; although, case study approach has no need for internal validation (Hartmann et al. 2012). Furthermore, the analysis of the articles' corpus shows that "questionnaire surveys and interviews" research approaches with 47 articles (11 percent) and "general discourse and literature reviews" approaches with 38 articles (8 percent) are also quite common among BIM authors.

### **3.4.3 BIM Software and Data Schema**

The bibliometric analysis of the BIM articles in this section assesses the frequency of usage and mentions of different BIM software and data standard as analyzed from the BIM publications' corpus. An analysis of the articles reveals that there are eleven (11) BIM data schemas in use in the construction industry; and in fact, the industry foundation class (IFC) and the green building eXtensible markup language (gbXML) are very popular among BIM authors with 187 and 30 mentions in the articles' corpus (see Table 9). However, of the two interoperability standards, IFC is mainly employed in the AEC industry (Belsky et al. 2014; Karan, Irizarry 2015; Tashakkori et al. 2015).

More so, the high usage of the IFC schema is because of its continuous improvement so as to advance interoperability among BIM software (Kota et al. 2014), although it is not yet at a satisfactory level (Aram et al. 2013). Meanwhile, the MVD schema is only a subset of the IFC schema (Lee et al. 2013). Also, the IFCXML schema is another subset of the IFC schema that allows the IFC to be transmutable over the web (Redmond et al. 2012). Furthermore, unlike IFC, the gbXML data schema is specifically developed for energy analysis while the IFC data format is a schema developed by buildingSMART and can be used for data exchange across the building life cycle (Kim et al. 2012).

Furthermore, the analysis of BIM software for architectural and structural designs reveals 10 software in use in the AEC sector, of which Autodesk Revit with 132 articles' mentions is the most used software; previous studies unveiled similar findings (see Kim et al. 2015; Wang et al. 2015). Survey results by Bynum et al. (2013) revealed that Revit is the dominant BIM authoring tool in the AEC industry with 78 percent of respondents utilizing it. However, there was low usage of BIM energy analysis software such as Ecotect, IES Virtual Environment. Nevertheless, no single BIM application can support all the process functionalities required in the AEC industry.

Table 4: BIM journal publication lists and Impact factors

S/N	Journals	Total	Impact factor	S/N	Journals	Total	Impact factor
1	Applied Energy	2	5.746	32	IEEE Transactions on Engineering Management	1	1.103
2	Environmental Science and Technology	1	5.393	33	International Journal of Precision Engineering and Manufacturing	1	1.075
3	Computer-Aided Civil& Infrastructure Engineering	5	5.288	34	Journal of Bridge Engineering	1	1.069
4	Journal of Cleaner Production	1	4.959	35	Sustainable Cities and Society	3	1.044
5	Waste Management	1	3.829	36	Scientia Iranica	1	1.025
6	Building and Environment	6	3.394	37	Structural Design of Tall and Special Buildings	1	0.898
7	Resource Conservation and Recycling	2	3.280	38	Journal of Performance of Constructed Facilities	2	0.893
8	Energy Policy	1	3.045	39	HVAC&R Research	2	0.871
9	Expert Systems with Applications	1	2.981	40	Journal of Transportation Engineering	1	0.801
10	Energy and Buildings	10	2.973	41	Journal of Industrial and Management Optimization	1	0.776
11	IEEE Transactions on Intelligent Transportations System	1	2.534	42	Transportation Research Record	1	0.770
12	Automation in Construction	177	2.442	43	Journal of Asian Architecture and Building Engineering	11	0.750
13	Construction and Building Materials	2	2.421	44	Journal of Environmental Protection and Ecology	1	0.734
14	Applied Mathematical Modelling	1	2.291	45	Studies in Informatics and Control	1	0.723
15	Building Research and Information	2	2.196	46	Mathematical Problems in Engineering	1	0.689
16	Safety Science	4	2.157	47	KSCE Journal of Civil Engineering	10	0.600
17	Carbon Management	1	2.092	48	Canadian Journal of Civil Engineering	6	0.586
18	Advanced Engineering Informatics	40	2.000	49	Advances in Structural Engineering	1	0.577
19	Journal of Computing in Civil Engineering	36	1.855	50	International Journal of Engineering Education	2	0.559
20	Journal of Management in Engineering	14	1.840	51	Journal of Professional Issues in Engineering Education and Practice	11	0.538
21	Journal of Building Performance Simulation	1	1.807	52	PCI Journal	1	0.526
22	Research in Engineering Design	1	1.786	53	Proceedings of the Institution of Civil Engineers-Structures and Buildings	1	0.429
23	Measurement	1	1.742	54	International Journal of Civil Engineering	1	0.372
24	Advances in Engineering Software	3	1.673	55	Proceedings of the Institution of Civil Engineers- Civil Engineering	2	0.348
25	Journal of Civil Engineering and Management	14	1.530	56	Journal of the Chinese Institute of Engineers	4	0.246
26	Engineering with Computers	1	1.460	57	Research Journal of Chemistry and Environment	1	0.240
27	Building Simulation	3	1.409	58	Informes de la Construccin	3	0.227
28	Sustainability	3	1.343	59	Ashrae Journal	5	0.223
29	International Journal of Computer Integrated Manufacturing	1	1.319	60	Gradevinar	3	0.158
30	Structure and Infrastructure Engineering	1	1.202	61	Civil Engineering	1	0.153
31	Journal of Construction Engineering and Management	26	1.152	62	Intelligent Computing in Engineering and Architecture	1	N/A
		<u>363</u>				<u>82</u>	
Total		445					

Note: Year (*Number of Publications*) - 2006 (2), 2007 (3), 2008 (7), 2009 (6), 2010 (17), 2011 (32), 2012 (28), 2013 (63), 2014 (96), 2015 (114), 2016 (77).

N/A – Not available      Impact Factor as at year 2016.

Table 5: BIM Research Categories

Code	BIM- Research Categories	Number of articles
RC1	IT-enabled simulations and Visualisation	40
RC2	Building design and Energy conformance	65
RC3	BIM Software & Data schema	54
RC4	BIM model development	52
RC5	BIM learning, adoption & practice	70
RC6	Construction and Project Management	78
RC7	Safety/ Risk Management	31
RC8	Facility management	37
RC9	Sustainability	17
RC10	Literature review	1

Table 6: Theme loading for the BIM research areas

Code (research category)	Research areas/themes	Number of themes
RC1	RC1.1- Emergencies sensing localization; RC1.2- Real-time and 3D visualizations RC1.3- Fire safety simulations RC1.4- Point-cloud data extraction RC1.4- Automated or semi-automated generation of data RC1.5- Virtual support systems RC1.6- Synchronous online collaboration	6
RC2	RC2.1- Building energy regulations RC2.2- Code checking & compliance RC2.3- Building envelope cost and energy performance RC2.4- Energy management and analysis RC2.5- Structural analysis and design RC2.6 Building rating systems and assessments RC2.7- Tracking of design changes and errors RC2.8- Daylighting profiling RC2.9- Design validation and coordination	9
RC3	RC3.1- Interoperability RC3.2- Usefulness, benefits, and limitations of BIM applications RC3.3- Augmented reality system RC3.4- Industry Foundation Class (IFC); RC3.5- BIM & Semantic web interoperability RC3.6- Semiotic User interface analysis RC3.7- Cost Estimating BIM tools RC3.8- Software coupling RC3.9- BIM data exchanges RC3.10- Mobile BIM RC3.11- Data schemas (GbXML, City GML, MVD, etc.)	11
RC4	RC4.1- Quantity take-off RC4.2- As-built BIM creation RC4.3- Domain vocabulary & Ontology development RC4.4- Model validation process RC4.5- Cloud-BIM RC4.6- BIM collaborative system RC4.7- Semantic web technology RC4.8- Physical BIM library RC4.9- Scan-to-BIM techniques RC4.10- Open query language for BIM RC4.11- nD developments RC4.12- Mapping of BIM & domain knowledge RC4.13- Discrete Event Simulation (DES) model RC4.14- Information extraction RC4.15- Topological information extraction model RC4.16- Java-based BIM	16
RC5	RC5.1- BIM usage and adoption RC5.2- BIM curriculum development RC5.3- Construction stakeholders' BIM adoption strategies RC5.4- BIM teaching and support; RC5.5- Drivers of BIM adoption RC5.6- Cost-benefit analysis of BIM implementations RC5.7- BIM adoption barriers RC5.8- BIM standardization & Intellectual property rights RC5.9- BIM competency assessment RC5.10- BIM ethics & professionalism RC5.11- BIM practice paradigms & governance approach.	11
RC6	RC6.1- Construction planning and monitoring RC6.2- Schedule optimization RC6.3- BIM governance platform RC6.4- Material management & quality assessment RC6.5- Waste management RC6.6- Supply chain management RC6.7- Lean construction management & BIM RC6.8- Construction sequencing & logistics optimization RC6.9- Real-time progress management RC6.10- Labour productivity assessment RC6.11- Automated, rule-based constructability checking RC6.12- 3D compliance checking RC6.13- Project cost control RC6.14- Project delivery and asset management RC6.15- Construction knowledge management RC6.16- BIM-based procurement framework RC6.17- RCE-procurement RC6.18- Construction collaborative networks.	18

RC7	RC7.1- Automated safety planning and management      RC7.2- Risk knowledge management RC7.3- Walkability & hazardous area identification   RC7.4- Site risk identification RC7.5- Search & Rescue algorithm   RC7.6- Fire safety management RC7.7- Workspace safety and requirements   RC7.8 Automatic safety checking of construction models.	8
RC8	RC8.1- Automated access control      RC8.2- Defect management system RC8.3- Earthquake damage assessment      RC8.4- Performance-based maintenance RC8.5- FM data extraction & conversion      RC8.6- Indoor emergency response facilitation RC8.7- Virtual retrofit      RC8.8- Tracking the built status of MEP works   RC8.9-Failure root-cause detection RC8.10- Security analysis      RC8.11- Localization of RFID-equipped assets   RC8.12- Handover model RC8.13- Building maintenance   RC8.14- Energy retrofitting   RC8.15- Facilities lifecycle information on RFID tags   RC8.16- Heat flow modeling   RC8.17- Image-based verification of as-built documentation.	17
RC9	RC9.1- Sustainability performance of building      RC9.2- Environmental impact evaluation RC9.3- Integrating BIM & LEED      RC9.4- Sustainable energy usage RC9.5- BIM-based decision support for master planning      RC9.6- Sustainability Appraisal (steel design) RC9.7- Indoor environmental quality (IEQ)      RC9.8- Sustainable design and construction RC9.9- 3D analysis of lifecycle assessment      RC9.10- Sustainable Material selection.	10
RC10	RC10.1- Pattern and trend in BIM research.	1

Table 7: Funding structure

Year	Funded articles	Percent (%)	Research categories	Funded articles	Percent (%)
2016	40	17.3	RC1	21	9.1
2015	67	29	RC2	40	17.3
2014	46	19.9	RC3	35	15.2
2013	32	13.9	RC4	32	13.9
2012	10	4.3	RC5	26	11.3
2011	20	8.7	RC6	39	16.9
2010	8	3.5	RC7	15	6.5
2009	5	2.2	RC8	16	6.9
2008	1	0.4	RC9	7	3
2007	2	0.9	RC10	0	0
2006	0	0			
Total	231	100		231	100

Table 8: Articles' project sector analysis

Project Sector	Aspects covered	Number of articles
Building and Housing	Single family houses; Residential floors; Parking garage; Storeys buildings; High-rise structures; Building component and elements, Sports center, Educational buildings	347
Transportation	Bridges; Highways; Tunnel construction; Subways; Airports; Subway stations; Railways; Railway tracks	17
Environment	Safe walking environment; Safety; Traffic noise control; Earthquake damage assessment; Waste effectiveness; Hazard identification & prevention; Safety planning; Work-Space Planning	24
Education	BIM curriculum development; BIM implementation; BIM in Quantity Surveying practice; BIM teaching; Developing Students' Collaborative Skills; Course developments	22
Energy infrastructure	Natural gas plant construction; Gas pipeline; Renewable energy system	5
General	Applies to all project sectors (Procurement, Estimating, Construction projects & Built environment)	28
Urban regeneration	Post-earthquake operations (such as search and rescue, and damage assessment)	2

Table 9: BIM Software and data schema

BIM Software category	Software (frequency of mentions or usage)	Number
Data Schema	Industry Foundation Classes[IFC]- 187; GbXML [green building XML]- 30 MVD [model view definitions]- 22; IFCXML- 22; AecXML- 5; City GML- 4; Omni class- 2; NBDM [TrySys]- 1; bcXML- 1; LandXML- 1; EcoXML- 1	11
Architectural and Structural tools	Autodesk Revit- 132; Graphic Soft ArchiCAD- 67; AutoCAD- 28; Bentley Architecture systems- 26; Vico Constructor- 13; Digital Projects- 8; Nemetschek AllPlan- 8; Nemetschek Vectorworks- 4 Google SketchUp- 3; Autodesk Inventor- 1	10
Building Energy Analysis & Simulation Tools	Energy Plus- 24; Ecotect- 17; IES VE- 10; eQuest- 10; DOE-2.2- 7; Radiance- 6	6
Estimating Tools	Quantity take-off- 3; On-screen take-off- 2; Innovaya- 2; BuildSoft Estimating software- 1; CATO CAD- 1; Estimator- 1	6
Structural Tools*	Tekla structures- 30; SAP- 2; MIDAS- 2; STAAD Pro V8i- 1; ADAPT (Structural Concrete Software)- 1	5
Construction Management Tools	Navisworks- 27; MS Excel- 13; MS Project- 11; DProfiler- 3	4
Sustainability Analysis	Green Building Studio- 13; IES Virtual Environment- 10; Project Vasari- 1	3
Model Viewer	Solibri Model Viewer- 32; Bentley Micro Station- 13	2
Geographic Information System	ESRI's ArcGIS- 4	1
Ontology Development Tools	Protégé- 2	1

#### 4.0 Discussions on the BIM Research Categories

This section provides a semantic link between the defined BIM research categories and research areas/themes that were established in section 3.2 with a view to providing a more qualitative analysis of the articles in alignment with the categories descriptions. Therefore, we conducted a critical appraisal of selected articles based on their relevance to the established BIM research categories.

To conserve space, we reviewed four research categories out of the ten defined BIM research categories, which are presented in the following sub-sections. Moreover, a total of 175 articles were examined in the section.

#### 4.1 Construction and Project Management (RC6)

The research category “construction and project management (RC6)” is the most trending BIM sub-field (with 78 articles) among the ten identified research categories, and it also has the highest number of research areas with 18 themes as seen in Table 5 and 6. Trending topics in this field include *RC6.1- “construction planning and monitoring”* (Faghihi et al. 2016; Kim et al. 2016; Kim et al. 2014); *RC6.2- “schedule optimization”* (Altaf et al. 2014; Chen et al. 2013; Faghihi et al. 2014; Gelisen et al. 2014; Kang et al. 2016; Kim et al. 2013; Liu et al. 2015; Moon et al. 2014; Tserng et al. 2014; Wang et al. 2014); *RC6.3- “BIM governance platform”* (Dossick, Neff 2010; Farr et al. 2014; Knight 2008); *RC6.4- “Material management & quality assessment”* (Chen, Luo 2014; Francome, El Asmar 2015; Kim et al. 2015), and *RC6.5- “Waste management”* (Akinade et al. 2015; Liu et al. 2015; Porwal, Hewage 2012; Won et al. 2016).

More so, other research areas focus on *RC6.6- “supply chain management”* (Babic et al. 2010; Irizarry et al. 2013; Lu et al. 2016); *RC6.7- “lean construction management & BIM”* (Dave et al. 2016; Sacks et al. 2010; Sacks et al. 2010); *RC6.8- “construction sequencing & logistics optimization”* (Han et al. 2015; Kumar, Cheng 2015; Marzouk, Abubakr 2016); *RC6.9- “real-time progress management”* (Kim et al. 2013; Matthews et al. 2015); *RC6.10- “labour productivity assessment”* (Lee et al. 2014; Poirier et al. 2015); and *RC6.11- “automated rule-based constructability checking”* (Hu et al. 2016; Nahangi, Haas 2016).

Furthermore, other research themes under RC6 are *RC6.12- “3D compliance checking”* (Jiang, Leicht 2015; Nahangi, Haas 2014); *RC6.13- “project cost control”* (Turkan et al. 2013; Wang et al. 2014); *RC6.14- “project delivery and asset management”* (Choi et al. 2014; Tsai et al. 2014); *RC6.15- “construction knowledge management”* (Lin 2014; Peterson et al. 2011; Wang, Leite 2016); *RC6.16- “BIM-based procurement framework”* (Goedert, Meadati 2008); *RC6.17- “RCE-procurement”* (Grilo, Jardim-goncalves 2011; Grilo, Jardim-Goncalves 2013), and *RC6.18- “construction collaborative networks”* (Abedi et al. 2016; Grilo et al. 2013; Neath et al. 2014).

Furthermore, Fan et al. (2014) carried out eight (8) case studies research to assess the effect of BIM on construction projects on aspects such as request for information (RFI), reworks, schedule compliance and change orders. The findings of the case studies reveal a marked reduction in the RFI between 50 and 90 percent, fewer or no modification(s), and compromises in the project with improved quality. More so, there was more accurate schedule compliance with shorter duration and altogether less reworks and significantly fewer change orders. Meanwhile, to facilitate real-time visualization of BIM models; Johansson et al. (2015) developed a prototype BIM viewer. Tan (2017) use the genetic algorithm (GA) technique to optimize for the visualization of lift planning in offshore rigs. Other studies include BIM for infrastructural projects (Bradley et al. 2016), the development of a prototype BIM-GIS architecture to facility management practices (Kang, Hong 2015); the use of geospatial and semantic technologies for pre-construction operations (Karan, Irizarry 2015), BIM for quality assurance (Kim et al. 2016); BIM for work sequencing (Kim et al. 2016); project progress and productivity improvement (Matthews et al. 2015; Nath et al. 2015), and BIM for as-built documentation (Park, Cai 2017).

In summary, there has been a significant increase in the number of publications classified under the labeled theme “*construction and project management*” between 2013 and 2016, in fact, 65 out of the 78 BIM articles under this research area were published during this period. More so, of the 18 BIM research areas under RC6, we have four themes with more than 6 articles, these include *RC6.2- “schedule optimization”* with 11 articles, *RC6.9- “real-time progress management”*, *RC6.18- “construction collaborative networks”* and *RC6.15- “construction knowledge management”* with 9, 6 and 6 BIM articles respectively.

The review and analysis of the BIM articles reveals the benefits of BIM in construction and project management as (1) to facilitate collaboration and coordination among construction stakeholders; (2) to optimize the construction schedule, (3) to track the progress of work on site, and (4) to serve as hub or central house for the management of construction information and processes.

#### 4.2 BIM learning, adoption & practice (RC5)

The next identified BIM research category is “*BIM learning, adoption & practice*” with 70 BIM articles and under this category are 11 research area/themes as shown in Table 5 and 6. Without the framework to aid and strengthen the implementation of innovative technology, approaches or techniques in a diverse and competitive industry like the construction industry such technology or approach may not seek the light of the day. The previous statement enforces the importance of BIM paper in this research category.

More so some of these studies and research themes covered include: *RC5.1- “BIM usage and adoption”* (Eadie et al. 2013; Fortner 2008; Gilkinson et al. 2015; Kim et al. 2016); *RC5.2- “BIM curriculum development”* (Pikas et al. 2013; Sacks, Pikas 2013; Sampaio 2015; Solnosky et al. 2014; Wu, Issa 2014); *RC5.3- “construction stakeholders’ BIM adoption strategies”* (Ahn et al. 2016; Jung, Lee 2016; Salleh, Fung, 2014; Xu et al. 2014); *RC5.4- “BIM teaching and support”* (Gnau et al. 2015; Kim 2012; Kovacic et al. 2015; Sacks, Barak 2010); *RC5.5- “drivers of BIM adoption”* (Mom et al. 2014; Tsai et al. 2014); *RC5.6- “cost-benefit analysis of BIM implementations”* (Giel, Issa 2013; Lu et al. 2014).

Other research themes in this research category are *RC5.7- “BIM adoption barriers”* (Chien et al. 2014; Watson 2011); *RC5.8- “BIM standardization & intellectual property rights”* (Fan 2014; Howard, Björk 2008; Kraatz, Hampson 2013); *RC5.9- “BIM*

*competency assessment*” (Giel, Issa 2016; Succar et al. 2013; Wong et al. 2015); *RC5.10- “BIM ethics & professionalism*” (Jaradat et al. 2013; Love et al. 2015; Succar 2009); and *RC5.11- “BIM practice paradigms & governance approach*” (Alreshidi et al. 2016; Becerik-Gerber, Kensek 2010; Hanna et al. 2013; Hanna et al. 2014; Rezgui et al. 2013; Samuelson, Björk 2016; Taylor, Bernstein 2009; Won, Lee 2016).

A study by Lee and Yu (2016) compared the acceptance level of BIM in South Korea and the United States of which the data were collected using interviews and questionnaire surveys. Their findings revealed a higher adoption and user satisfaction rate in the US than those in South Korea. More so, an ethnography research conducted by Mahalingam et al. (2015) on two metro railway stations projects in India, exemplified the effect of BIM in the decision-making process leading to precise planning and reduced contract duration. The rapid growth in BIM adoption in the Swedish construction industry was elucidated in a study by Samuelson and Björk (2014) while Zhang et al. (2016) developed a framework to facilitate the integration of BIM and sustainability studies into the curriculum development for civil engineering students. Also, some set of principal areas or factors to consider in the adoption and implementation of BIM in an organization has been developed (Won et al. 2013).

Conclusively, there have been a steady increase in the number of BIM articles published under the category- *“BIM learning, adoption & practice”* between 2013 and 2016; however, prior to this period, less than four BIM articles in this research area were disseminated. Meanwhile, BIM research in this category had focused mostly on *RC5.1- “BIM usage and adoption”* and *RC5.11- “BIM practice paradigms & governance approach”* (with 13 articles each); we can then surmise that BIM being a novel approach in the built environment has led BIM authors to direct their attention to the core of its adoption and practice and to set up a governance mechanism to facilitate its implementation. Next, are research themes such as *RC5.2- “BIM curriculum development”* and *RC5.4- “BIM teaching and support”* with 7 articles each; this analysis reveals the increasing spotlight on the development of BIM module and training for undergraduate university students and professionals who would be the fulcrum in the adoption and implementation of BIM.

Therefore, based on the analysis of this category, we deduce the critical drivers of BIM adoption to include: (1) The development of undergraduate BIM curriculum and modules which should incorporate the practical aspects of BIM to train students who are potential ‘recruits’ to the industry. (2) The institution of a training and support programs such as workshops, seminars, and conferences on BIM to aid the skill sets and development of in-house personnel on the use of BIM. (3) Establishment of a working BIM governance mechanism or framework to support its overall implementation and increase the success rate of BIM-enable projects.

### 4.3 Building design and Energy conformance (RC2)

The research category of *“Building design and Energy conformance (RC2)”* is another major area of immense publication and interest among BIM authors and in the construction industry with 65 BIM articles as at the year 2016. The bibliometric analysis of its research areas and themes crystallize out nine (9) main BIM research themes which are: *RC2.1- “building energy regulations”* (McGuire et al. 2016; Thompson, Bank 2010); *RC2.2- “code checking & compliance”* (Dimitrov, Golparvar-Fard 2015; Jung et al. 2015; Li et al. 2014); *RC2.3- “building envelope, cost and energy performance”* (Ahn et al. 2014; Asl et al. 2015; Chardon et al. 2016; Gökçe, Gökçe, 2013; Migilinskas et al. 2016); and *RC2.4- “energy management and analysis”* (Gökçe, Gökçe 2014; Kim, Anderson 2013; Kim, Yu 2016a; Lee et al. 2016).

Meanwhile, other preeminent research themes in this category include: *RC2.5- “structural analysis and design”* (Bosché, Guenet 2014; Ham, Golparvar-Fard 2015; Lee et al. 2012; Marzouk, Abdelaty 2014b); *RC2.6- “building rating systems and assessments”* (Basbagill et al. 2013; Oti et al. 2016; Ryu, Park 2016); *RC2.7- “tracking of design changes and errors”* (Dong et al. 2014; Lee et al. 2015; Pilehchian et al. 2015); *RC2.8- “daylighting profiling”* (Welle et al. 2012), and *RC2.9- “design validation and coordination”* (Gimenez et al. 2016; Kim, Jeon 2012; Kim, Yu 2016b; Lee et al. 2012; Shin, Cho 2015). Meanwhile, a bibliometric analysis of this category reveals more BIM publications in areas such as *RC2.5- “structural analysis and design”* with 13 articles and *RC2.3- “building envelope, cost, and energy performance”* with 12 BIM articles.

Other aspects such as *RC2.9- “design validation and coordination”* and *RC2.4- “energy management and analysis”* with 12 and 10 BIM articles respectively are current research directions in this category. Authors with research interest in *“building design and energy conformance (RC2)”* tends to center the studies mostly in these four main themes; and it signifies the increasing importance of developing BIM models for projects which are of (1) high structural design and integrity; (2) validated and vetted designs, and (3) a profiled and efficient energy usage and management.

Studies such as Ham and Golparvar-Fard (2015) developed a system using the gbXML schema to improve the energy performance of buildings while query systems based on IFC schema have also been advanced (Gao et al. 2015; Kang 2017; Solihin et al. 2017). More so, Kim et al. (2015) developed a physical BIM library to aid the simulation of building component thermal conditions; while Kim et al. (2015) observed that most energy analysis for buildings are done when the design has been completed. Hence, they developed an IFC framework to map building materials with energy properties of which the results shows “significant gain in accuracy.” Meanwhile, Gökçe and Gökçe (2014) introduced an efficient integrated energy platform for the residential buildings, while Shiau et al. (2012) utilized Ecotect software to improve the energy usage of old structures; and studies such as Cho et al. (2014) and Knight et al. (2010) discusses the benefits of BIM in HVAC design and placement of reinforcement bars in concrete slabs respectively. Other researches focus include case studies reviews on structural BIM



(Robinson 2007); quantitative assessment of carbon-dioxide emission (Jun et al. 2015); strategies for design error management (Al Hattab et al. 2015); creation of BIM models from laser scanner data (Xiong et al. 2013), and the design of track alignment using BIM (Huang et al. 2011).

#### 4.4 Sustainability (RC9)

Sustainability is one of the increasing and preeminent issues in the construction industry and in other sectors of the global economy, while the concept of sustainable development represents a pyramid shift in the three-wheel drive of construction projects otherwise known as the “project management triangle” which are the time, cost and quality. The adoption and implementation of sustainable practices in construction ensure such projects meets its environmental, social and economic needs, considerations and implementation. BIM publications in this category are on the increase since the year 2011 till date with ten (10) main research themes has identified by the bibliometric analysis of this category articles’ corpus.

The predominant research areas in this category include: *RC9.1- “sustainability performance of building”* (Jrade, Jalaei 2013; Kreiner et al. 2015); *RC9.2- “environmental impact evaluation”* (Lee et al. 2015); *RC9.3- “integrating BIM and LEED”* (Azhar et al. 2011; Jalaei, Jrade 2015; Wu, Issa 2015); *RC9.4- “sustainable energy usage”* (Azzi et al. 2015; Liu et al. 2015); *RC9.5- “BIM-based decision support for master planning”* (Kim et al. 2015); *RC9.6- “sustainability appraisal”* (Oti, Tizani 2015; Wong, Kuan 2014); *RC9.7- “indoor environmental quality (IEQ)”* (Marzouk, Abdelaty 2014a); *RC9.8- “sustainable design and construction”* (Bynum et al. 2013; Geyer 2012); *RC9.9- “3D analysis of lifecycle assessment”* (Inyim et al. 2015; Kulahcioglu et al. 2012); and *RC9.10- “sustainable material selection”* (Bank et al. 2011).

Prominent studies on sustainability issues in construction projects include Oti et al. (2016) who utilized the BIM API extension to embed sustainability issues to simulate the assessment of structural steel design; while Oh et al. (2015) in a case study approach, reviewed the enhancement of the design quality of a hospital design using an integrated system. Ilhan and Yaman (2016) advanced an IFC-based sustainability decision support system (“Green building assessment tool (GBAT)”) of which green building data can be certified for BREEAM (Building Research Establishment Environmental Assessment Method).

#### 5.0 Research Limitations

The main limitation of this study’s bibliometric analysis is the literature search strategy. That is, the choice of the scientific database (ISI Web of Science) which despite being “*the world’s leading citation database, offering a high level of accuracy and detail on a multidisciplinary scale*” (Neto et al. 2016), it may only represent a fraction of the whole population. Another drawback might evolve from the exclusion of articles not written in English and some other false positives in the removal of some unrelated papers or the categorization of items within research areas.

#### Conclusions

The advent of BIM in the construction industry has brought about tremendous improvement in the process and system of coordinating construction projects and enabling collaboration among professionals both in the academia and the industry. The research’s objectives were to investigate and evaluate the extant literature on BIM; and identify the trends, research impacts, research categories, BIM funding structure and other parameters of the research publications’ corpus through a bibliometric analysis of 445 BIM articles; which are of high impact factors from the Web of Science which Neto et al. (2016) regarded as the “largest and most reliable source for academic publications”.

The level and depth of the bibliometric analysis is considered as the prime distinction between this study and previous literature reviews on BIM literature; which allows academics, industry practitioners and readers to track the funding structure of BIM research, the research categories and the project sectors for which BIM has had the most impact; and have an overview of how BIM literature has evolved over the years. Moreover, based on the bibliometric analysis of the BIM articles, there was a marked increase in the number of BIM articles from 17 papers in 2010 to almost double value of 32 BIM articles in 2011 and the volume of BIM publications crossed the threshold of a hundred (100) BIM papers in the year 2015 with a total of 114 published BIM articles.

Also, an analysis of the articles’ corpus journal list reveals *Automation in Construction* as the journal with most published work on BIM themes. More so, the tremendous impacts of BIM implementation in the construction industry were felt most in the building and housing project sector with more than 340 BIM articles addressing issues such as building elements and components, etc.. Other project areas such as transportation, environment, and even the educational sector had been positively influenced by the adoption of BIM with several articles developing frameworks, models, systems and providing innovation solutions to improve the identified sectors using BIM.

More so, after the bibliometric analysis of the BIM articles, we further endeavor to classify them into 10 research categories, and the core research categories based on published BIM works are (1) Construction and Project Management. (2) BIM learning, adoption, and practice. (3) BIM design and energy conformance. (4) BIM software and data schema; and (5) BIM model development. The five research categories had more than 50 BIM articles each and are considered the salient BIM research

areas. Nevertheless, research areas such as *facility management* and *sustainability* can be classified as the latest trends in BIM research with increased output in publications in those two categories since the year 2014.

Furthermore, an analysis of funding structure of BIM articles reveals that more than 50 percent of the 445 analyzed articles received some funding to undertake the research; while further funding inquiry-based research category analysis and research origin analysis reveals thus: (1) there has been a significant increase in funded articles since the year 2013 till date, (2) BIM articles relating to research categories such as “*building design and energy conformance*”, “*construction and project management*”, “*BIM software & data schema*” and “*BIM model development*” have received more funding (with at least 30 funded articles); (3) the Republic of Korea and the United States with 68 and 45 funded BIM publications are the countries whose BIM researchers have received a sizeable number of research grants to undertake BIM-related research. However, funding analysis by regions shows Asia with 112 articles, Europe with 57 articles and North America with 55 BIM articles are the regions with the most funded BIM publications.

Moreover, a further analysis of the research categories reveals 107 research themes. The analysis unfolds trending research themes and direction, both in the academia and in the industry and these include: “*BIM usage and adoption (RC5.1)*,” “*BIM practice paradigms & governance approach (RC5.11)*”; “*structural analysis and design (RC6.9)*,” “*building envelope, cost and energy performance (RC2.3)*,” “*design validation and coordination (RC2.9)*”; and “*energy management and analysis (RC2.1)*” with more than 10 BIM articles each. The result is a pointer to the fact that more studies are being conducted to investigate BIM adoption and implementation in several countries and domains, and in countries where BIM has reached an acceptance level of adoption and compliance, such as the US, research tends to focus on developing and introducing BIM governance mechanisms. Other findings evaluate the salient research methodology used in previous studies and the available BIM software and data schema while the discussion centered on the established BIM research categories and themes.

However, for potential future research, researchers can select one or more research category or theme and undertake a review using the same or different research approach. The study’s bibliometric analysis identified some essential gaps and opportunities for future research in BIM field. Research areas such as (1) BIM-Sustainability issues integration, (2) Using BIM for environmental and socio-economic evaluations, (3) integrating BIM and Augmented reality during the construction phase, (4) Ontology and semantic web, (5) Mapping of BIM & domain knowledge and (5) information extraction are currently not receiving adequate considerations from researchers in the academia and those in the industry. It is noteworthy that these research areas when given due attention have the benefits of enhancing the growth of the construction sector and boost its productivity level. Conclusively, the study would assist BIM researchers and other academics to recognize the pattern and structure of BIM research and field and help them to pinpoint areas of research interest for their future research works.

## Funding

This research study is supported through funding by the Sustainable City Laboratory under the auspice of the Department of Building and Real Estate, The Hong Kong Polytechnic University, Hong Kong.

## Disclosure statement

The authors state that there is no financial, professional or personal interest or benefit arising from the direct applications of their research.

## References

- Abedi, M.; Fathi, M. S. Mirasa, A. K.; Rawai, N. M. 2016. Integrated collaborative tools for precast supply chain management. *Scientia Iranica*, 23(2), 429–448.
- Ahn, K.-U.; Kim, Y.-J.; Park, C.-S.; Kim, I.; Lee, K. 2014. BIM interface for full vs. semi-automated building energy simulation. *Energy and Buildings*, 68(B, SI), 671–678. <https://doi.org/10.1016/j.enbuild.2013.08.063>
- Ahn, Y. H.; Cho, C.-S.; Lee, N. 2013. Building Information Modeling: Systematic Course Development for Undergraduate Construction Students. *Journal of Professional Issues in Engineering Education and Practice*, 139(4), 290–300. [https://doi.org/10.1061/\(ASCE\)EI.1943-5541.0000164](https://doi.org/10.1061/(ASCE)EI.1943-5541.0000164)
- Ahn, Y. H.; Kwak, Y. H.; Suk, S. J. 2016. Contractors’ Transformation Strategies for Adopting Building Information Modeling. *Journal of Management in Engineering*, 32(1). [https://doi.org/10.1061/\(ASCE\)ME.1943-5479.0000390](https://doi.org/10.1061/(ASCE)ME.1943-5479.0000390)
- Aibinu, A.; Venkatesh, S. 2014. Status of BIM Adoption and the BIM Experience of Cost Consultants in Australia. *Journal of Professional Issues in Engineering Education Practice*, 140(Autodesk 2011), 1–10. [https://doi.org/10.1061/\(ASCE\)EI.1943-5541.0000193](https://doi.org/10.1061/(ASCE)EI.1943-5541.0000193)
- Ajam, M.; Alshawi, M.; Mezher, T. 2010. Augmented process model for e-tendering: Towards integrating object models with document management systems. *Automation in Construction*, 19(6), 762–778. <https://doi.org/10.1016/j.autcon.2010.04.001>
- Ajayi, S. O.; Oyedele, L. O.; Bilal, M.; Akinade, O. O.; Alaka, H. A. H. A.; Owolabi, H. A.; Kadiri, K. O. 2015. Waste effectiveness of the construction industry: Understanding the impediments and requisites for improvements. *Resources Conservation and Recycling*, 102, 101–112. <https://doi.org/10.1016/j.resconrec.2015.06.001>

- Akinade, O. O.; Oyedele, L. O.; Bilal, M.; Ajayi, S. O.; Owolabi, H. A.; Alaka, H. A.; Bello, S. A. 2015. Waste minimisation through deconstruction: A BIM based De-Constructability Assessment Score (BIM-DAS). *Resources Conservation and Recycling*, 105(A), 167–176. <https://doi.org/10.1016/j.resconrec.2015.10.018>
- Al Hattab, M.; Hamzeh, F.; Hattab, M. A.; & Hamzeh, F. 2015. Using social network theory and simulation to compare traditional versus BIM-lean practice for design error management. *Automation in Construction*, 52, 59–69. <https://doi.org/10.1016/j.autcon.2015.02.014>
- Alci, N. I. A. Z. S.; Sampaio, A. Z. 2015. The Introduction of the BIM Concept in Civil Engineering Curriculum. *International Journal of Engineering Education*, 31(1B), 302–315. Retrieved from <http://search.ebscohost.com/login.aspx?direct=true&db=eue&AN=101083661&site=ehost-live>
- Alreshidi, E.; Mourshed, M.; Rezgui, Y. 2016. Cloud-Based BIM Governance Platform Requirements and Specifications: Software Engineering Approach Using BPMN and UML. *Journal of Computing in Civil Engineering*, 30(4). [https://doi.org/10.1061/\(ASCE\)CP.1943-5487.0000539](https://doi.org/10.1061/(ASCE)CP.1943-5487.0000539)
- Altaf, M. S.; Hashisho, Z.; Al-Hussein, M. 2014. A method for integrating occupational indoor air quality with building information modeling for scheduling construction activities. *Canadian Journal of Civil Engineering*, 41(3), 245–251. <https://doi.org/10.1139/cjce-2013-0230>
- Aram, S.; Eastman, C.; Sacks, R. 2013. Requirements for BIM platforms in the concrete reinforcement supply chain. *Automation in Construction*, 35, 1–17. <https://doi.org/10.1016/j.autcon.2013.01.013>
- Arayici, Y.; Coates, P.; Koskela, L.; Kagioglou, M.; Usher, C.; O'Reilly, K. 2011. Technology adoption in the BIM implementation for lean architectural practice. *Automation in Construction*, 20(2), 189–195. <https://doi.org/10.1016/j.autcon.2010.09.016>
- Asl, M. R.; Zarrinmehr, S.; Bergin, M.; Yan, W. 2015. BPOpt: A framework for BIM-based performance optimization. *Energy and Buildings*, 108, 401–412. <https://doi.org/10.1016/j.enbuild.2015.09.011>
- Azhar, S. 2011. Building Information Modeling (BIM): Trends, Benefits, Risks, and Challenges for the AEC Industry. *Leadership and Management in Engineering*, 11(3), 241–252.
- Azhar, S.; Carlton, W. A.; Olsen, D.; Ahmad, I. 2011. Building information modeling for sustainable design and LEED (R) rating analysis. *Automation in Construction*, 20(2), 217–224. <https://doi.org/10.1016/j.autcon.2010.09.019>
- Azzi, M.; Duc, H.; Ha, Q. P. 2015. Toward sustainable energy usage in the power generation and construction sectors-a case study of Australia. *Automation in Construction*, 59, 122–127. <https://doi.org/10.1016/j.autcon.2015.08.001>
- Babic, N. C.; Podbreznik, P.; Rebolj, D. 2010. Integrating resource production and construction using BIM. *Automation in Construction*, 19(5, SI), 539–543. <https://doi.org/10.1016/j.autcon.2009.11.005>
- Bank, L. C.; Thompson, B. P.; McCarthy, M. 2011. Decision-making tools for evaluating the impact of materials selection on the carbon footprint of buildings. *Carbon Management*, 2(4), 431–441. <https://doi.org/10.4155/CMT.11.33>
- Bansal, V. K. 2011. Use of GIS and Topology in the Identification and Resolution of Space Conflicts. *Journal of Computing in Civil Engineering*, 25(2), 159–171. [https://doi.org/10.1061/\(ASCE\)CP.1943-5487.0000075](https://doi.org/10.1061/(ASCE)CP.1943-5487.0000075)
- Basbagill, J.; Flager, F.; Lepech, M.; Fischer, M. 2013. Application of life-cycle assessment to early stage building design for reduced embodied environmental impacts. *Building and Environment*, 60, 81–92. <https://doi.org/10.1016/j.buildenv.2012.11.009>
- Becerik-Gerber, B.; Kensek, K. 2010. Building Information Modeling in Architecture, Engineering, and Construction: Emerging Research Directions and Trends. *Journal of Professional Issues in Engineering Education and Practice*, 136(3), 139–147. [https://doi.org/10.1061/\(ASCE\)EI.1943-5541.0000023](https://doi.org/10.1061/(ASCE)EI.1943-5541.0000023)
- Becerik-Gerber, B. A.; Ku, K.; Jazizadeh, F. 2012. BIM-Enabled Virtual and Collaborative Construction Engineering and Management. *Journal of Professional Issues in Engineering Education and Practice*, 138(3), 234–245. [https://doi.org/10.1061/\(ASCE\)EI.1943-5541.0000098](https://doi.org/10.1061/(ASCE)EI.1943-5541.0000098)
- Becerik-Gerber, B.; Jazizadeh, F.; Li, N.; Calis, G. 2012. Application Areas and Data Requirements for BIM-Enabled Facilities Management. *Journal of Construction Engineering and Management-ASCE*, 138(3), 431–442. [https://doi.org/10.1061/\(ASCE\)CO.1943-7862.0000433](https://doi.org/10.1061/(ASCE)CO.1943-7862.0000433)
- Belsky, M.; Eastman, C.; Sacks, R.; Venugopal, M.; Aram, S.; Yang, D. 2014. Interoperability for precast concrete building models. *PCI Journal*, 144–155.
- Borrmann, A.; Kolbe, T. H.; Donaubaue, A.; Steuer, H.; Jubierre, J. R.; Flurl, M. 2015. Multi-Scale Geometric-Semantic Modeling of Shield Tunnels for GIS and BIM Applications. *Computer-Aided Civil and Infrastructure Engineering*, 30(4), 263–281. <https://doi.org/10.1111/mice.12090>
- Bosché, F.; Guenet, E. 2014. Automating surface flatness control using terrestrial laser scanning and building information models. *Automation in Construction*, 44, 212–226. <https://doi.org/10.1016/j.autcon.2014.03.028>
- Bradley, A.; Li, H.; Lark, R.; Dunn, S. 2016. BIM for infrastructure: An overall review and constructor perspective. *Automation in Construction*, 71, 139–152. <https://doi.org/10.1016/j.autcon.2016.08.019>
- Brynjolfsson, E.; Hu, Y. (Jeffrey); Simester, D. 2011. Goodbye Pareto Principle, Hello Long Tail: The Effect of Search Costs on the Concentration of Product Sales. *Management Science*, 57(8), 1373–1386. <https://doi.org/10.1287/mnsc.1110.1371>
- Bynum, P.; Issa, R. R. A.; Olbina, S. 2013. Building Information Modeling in Support of Sustainable Design and Construction. *Journal of Construction Engineering and Management - ASCE*, 139(1), 24–34. [https://doi.org/10.1061/\(ASCE\)CO.1943-7862.0000560](https://doi.org/10.1061/(ASCE)CO.1943-7862.0000560)
- Chang, J.-R.; Lin, H.-S. 2016. Underground Pipeline Management Based on Road Information Modeling to Assist in Road Management. *Journal of Performance of Constructed Facilities*, 30(1). [https://doi.org/10.1061/\(ASCE\)CF.1943-5509.0000631](https://doi.org/10.1061/(ASCE)CF.1943-5509.0000631)
- Chardon, S.; Brangeon, B.; Bozonnet, E.; Inard, C. 2016. Construction cost and energy performance of single family houses: From integrated design to automated optimization. *Automation in Construction*, 70, 1–13. <https://doi.org/10.1016/j.autcon.2016.06.011>
- Chen, H.-M.; Hou, C. 2014. Asynchronous online collaboration in BIM generation using hybrid client-server and P2P network. *Automation in Construction*, 45, 72–85. <https://doi.org/10.1016/j.autcon.2014.05.007>
- Chen, L.; & Luo, H. 2014. A BIM-based construction quality management model and its applications. *Automation in Construction*, 46, 64–73. <https://doi.org/10.1016/j.autcon.2014.05.009>
- Chen, S.; Grif, F. H. B.; Chen, P.-H.; Chang, L.; Griffiths, F. H. H. 2013. A framework for an automated and integrated project scheduling and management system. *Automation in Construction*, 35, 89–110. <https://doi.org/10.1016/j.autcon.2013.04.002>

- Chien, K. F.; Wu, Z. H.; Huang, S. C. 2014. Identifying and assessing critical risk factors for BIM projects: Empirical study. *Automation in Construction*, 45, 1–15. <https://doi.org/10.1016/j.autcon.2014.04.012>
- Cho, Y. S.; Lee, S. I.; Bae, J. S. 2014. Reinforcement Placement in a Concrete Slab Object Using Structural Building Information Modeling. *Computer-Aided Civil and Infrastructure Engineering*, 29(1, SI), 47–59. <https://doi.org/10.1111/j.1467-8667.2012.00794.x>
- Choi, J. J.; Choi, J. J.; Kim, I. 2014. Development of BIM-based evacuation regulation checking system for high-rise and complex buildings. *Automation in Construction*, 46, 38–49. <https://doi.org/10.1016/j.autcon.2013.12.005>
- Choi, J.; Kim, I. 2015. Development of an Open BIM-based Legality System for Building Administration Permission Services. *Journal of Asian Architecture and Building Engineering*, 14(3), 577–584.
- Dave, B.; Kubler, S.; Främling, K.; Koskela, L. 2016. Opportunities for enhanced lean construction management using Internet of Things standards. *Automation in Construction*, 61, 86–97. <https://doi.org/10.1016/j.autcon.2015.10.009>
- Davies, R.; Harty, C. 2013. Implementing ‘Site BIM’: A case study of ICT innovation on a large hospital project. *Automation in Construction*, 30, 15–24. <https://doi.org/10.1016/j.autcon.2012.11.024>
- Deng, Y.; Cheng, J. C. P.; Anumba, C. 2016. Mapping between BIM and 3D GIS in different levels of detail using schema mediation and instance comparison. *Automation in Construction*, 67, 1–21. <https://doi.org/10.1016/j.autcon.2016.03.006>
- Dimitrov, A.; Golparvar-Fard, M. 2015. Segmentation of building point cloud models including detailed architectural/structural features and MEP systems. *Automation in Construction*, 51(C), 32–45. <https://doi.org/10.1016/j.autcon.2014.12.015>
- Dong, B.; O’Neill, Z.; Li, Z. 2014. A BIM-enabled information infrastructure for building energy Fault Detection and Diagnostics. *Automation in Construction*, 44, 197–211. <https://doi.org/10.1016/j.autcon.2014.04.007>
- Dossick, C. S.; Neff, G. 2010. Organizational Divisions in BIM-Enabled Commercial Construction. *Journal of Construction Engineering and Management-ASCE*, 136(4), 459–467. [https://doi.org/10.1061/\(ASCE\)CO.1943-7862.0000109](https://doi.org/10.1061/(ASCE)CO.1943-7862.0000109)
- Du, J.; Liu, R.; Issa, R. R. A. 2014. BIM Cloud Score: Benchmarking BIM Performance. *Journal of Construction Engineering and Management*, 140(11), 1–13. [https://doi.org/10.1061/\(ASCE\)CO.1943-7862.0000891](https://doi.org/10.1061/(ASCE)CO.1943-7862.0000891)
- Eadie, R.; Browne, M.; Odeyinka, H.; McKeown, C.; McNiff, S. 2013. BIM implementation throughout the UK construction project lifecycle: An analysis. *Automation in Construction*, 36, 145–151. <https://doi.org/10.1016/j.autcon.2013.09.001>
- Eastman C.; Teicholz P.; Sacks R.; Liston K. 2008. BIM handbook: a guide to building information modelling for owner, managers, designers, engineers, and contractors New York: John Wiley & Sons. ISBN: 978-0-470-54137-1 <https://goo.gl/WF71GL>
- Faghihi, V.; Reinschmidt, K. F.; Kang, J. H. 2014. Construction scheduling using Genetic Algorithm based on Building Information Model. *Expert Systems with Applications*, 41(16), 7565–7578. <https://doi.org/10.1016/j.eswa.2014.05.047>
- Faghihi, V.; Reinschmidt, K. F.; Kang, J. H. 2016. Objective-driven and Pareto Front analysis: Optimizing time, cost, and job-site movements. *Automation in Construction*, 69, 79–88. <https://doi.org/10.1016/j.autcon.2016.06.003>
- Fan, S. L.; Skibniewski, M. J.; Hung, T. W. 2014. Effects of building information modeling during construction. *Journal of Applied Science and Engineering*, 17(2), 157–166. <https://doi.org/10.6180/jase.2014.17.2.06>
- Fan, S.-L. 2014. Intellectual Property Rights in Building Information Modeling Application in Taiwan. *Journal of Construction Engineering and Management*, 140(3), 1–6. [https://doi.org/10.1061/\(ASCE\)CO.1943-7862.0000808](https://doi.org/10.1061/(ASCE)CO.1943-7862.0000808)
- Farr, E. R. P.; Piroozfar, P. A. E.; Robinson, D. 2014. BIM as a generic configurator for facilitation of customisation in the AEC industry. *Automation in Construction*, 45, 119–125. <https://doi.org/10.1016/j.autcon.2014.05.012>
- Fortner, B. B. 2008. Special Report: Are You Ready For BIM? Civil Engineering.
- Francom, T. C.; El Asmar, M. 2015. Project Quality and Change Performance Differences Associated with the Use of Building Information Modeling in Design and Construction Projects: Univariate and Multivariate Analyses. *Journal of Construction Engineering and Management*, 141(9). [https://doi.org/10.1061/\(ASCE\)CO.1943-7862.0000992](https://doi.org/10.1061/(ASCE)CO.1943-7862.0000992)
- Gao, G.; Liu, Y. S.; Wang, M.; Gu, M.; & Yong, J. H. 2015. A query expansion method for retrieving online BIM resources based on Industry Foundation Classes. *Automation in Construction*, 56, 14–25. <https://doi.org/10.1016/j.autcon.2015.04.006>
- Gelisen, G.; Griffis, F. H. 2014. Automated Productivity-Based Schedule Animation: Simulation-Based Approach to Time-Cost Trade-Off Analysis. *Journal of Construction Engineering and Management*, 140(4), 1–10. [https://doi.org/10.1061/\(ASCE\)CO.1943-7862.0000674](https://doi.org/10.1061/(ASCE)CO.1943-7862.0000674)
- Geyer, P. 2012. Systems modelling for sustainable building design. *Advanced Engineering Informatics*, 26(4), 656–668. <https://doi.org/10.1016/j.aei.2012.04.005>
- Giel, B. K.; Issa, R. R. A. 2013. Return on Investment Analysis of Using Building Information Modeling in Construction. *Journal of Computing in Civil Engineering*, 27(5), 511–521. [https://doi.org/10.1061/\(ASCE\)CP.1943-5487.0000164](https://doi.org/10.1061/(ASCE)CP.1943-5487.0000164)
- Giel, B.; Issa, R. R. A. 2016. Framework for Evaluating the BIM Competencies of Facility Owners. *Journal of Management in Engineering*, 32(1). [https://doi.org/10.1061/\(ASCE\)ME.1943-5479.0000378](https://doi.org/10.1061/(ASCE)ME.1943-5479.0000378)
- Gilkinson, N.; Raju, P.; Kiviniemi, A.; Chapman, C.; Raju, P.; Chapman, C. 2015. Building information modelling: the tide is turning. *Proceedings of the Institution of Civil Engineers-Structures and Buildings*, 168(2), 81–93. <https://doi.org/10.1680/stbu.12.00045>
- Gimenez, L.; Robert, S.; Suard, F.; Zreik, K. 2016. Automatic reconstruction of 3D building models from scanned 2D floor plans. *Automation in Construction*, 63, 48–56. <https://doi.org/10.1016/j.autcon.2015.12.008>
- Gnaur, D.; Svidt, K.; Thygesen, M. K. 2015. Developing Students’ Collaborative Skills in Interdisciplinary Learning Environments. *International Journal of Engineering Education*, 31(1, B, SI), 257–266.
- Goedert, J. D.; Meadati, P. 2008. Integrating Construction Process Documentation into Building Information Modeling. *Journal of Construction Engineering and Management*, 134(7), 509–516.
- Gökçe, H. U.; Gökçe, K. U. 2013. Holistic system architecture for energy efficient building operation. *Sustainable Cities and Society*, 6(1), 77–84. <https://doi.org/10.1016/j.scs.2012.07.003>
- Gökçe, H. U.; Gökçe, K. U. 2014. Integrated System Platform for Energy Efficient Building Operations. *Journal of Computing in Civil Engineering*, 28(6), 1–11. [https://doi.org/10.1061/\(ASCE\)CP](https://doi.org/10.1061/(ASCE)CP)
- Gökçe, H. U.; Gökçe, K. U. 2014. Multi-dimensional energy monitoring, analysis and optimization system for energy efficient building operations. *Sustainable Cities and Society*, 10, 161–173. <https://doi.org/10.1016/j.scs.2013.08.004>



- Grilo, A. A.; Jardim-Goncalves, R. 2011. Challenging electronic procurement in the AEC sector: A BIM-based integrated perspective. *Automation in Construction*, 20(2), 107–114. <https://doi.org/10.1016/j.autcon.2010.09.008>
- Grilo, A.; Jardim-Goncalves, R. 2013. Cloud-Marketplaces: Distributed e-procurement for the AEC sector. *Advanced Engineering Informatics*, 27(2), 160–172. <https://doi.org/10.1016/j.aei.2012.10.004>
- Grilo, A.; Zutshi, A.; Jardim-Goncalves, R.; Steiger-Garcia, A. 2013. Construction collaborative networks: the case study of a building information modelling-based office building project. *International Journal of Computer Integrated Manufacturing*, 26(1–2, SI), 152–165. <https://doi.org/10.1080/0951192X.2012.681918>
- Gu, N.; London, K. 2010. Understanding and facilitating BIM adoption in the AEC industry. *Automation in Construction*, 19(8), 988–999. <https://doi.org/10.1016/j.autcon.2010.09.002>
- Ham, Y.; Golparvar-Fard, M. 2015. Mapping actual thermal properties to building elements in gbXML-based BIM for reliable building energy performance modeling. *Automation in Construction*, 49(B, SI), 214–224. <https://doi.org/10.1016/j.autcon.2014.07.009>
- Han, K. K.; Cline, D.; Golparvar-Fard, M. 2015. Formalized knowledge of construction sequencing for visual monitoring of work-in-progress via incomplete point clouds and low-LoD 4D BIMs. *Advanced Engineering Informatics*, 29(4), 889–901. <https://doi.org/10.1016/j.aei.2015.10.006>
- Hanna, A. S.; Yeutter, M.; Aoun, D. G. 2014. State of Practice of Building Information Modeling in the Electrical Construction Industry. *Journal of Construction Engineering and Management*, 140(12). [https://doi.org/10.1061/\(ASCE\)CO.1943-7862.0000893](https://doi.org/10.1061/(ASCE)CO.1943-7862.0000893)
- Hanna, A.; Boodai, F.; El Asmar, M. 2013. State of Practice of Building Information Modeling in Mechanical and Electrical Construction Industries. *Journal of Construction Engineering and Management*, 139(10), 1–8. [https://doi.org/10.1061/\(ASCE\)CO.1943-7862.0000747](https://doi.org/10.1061/(ASCE)CO.1943-7862.0000747)
- Hartmann, T.; Van Meerveld, H.; Vossebeld, N.; Adrianse, A. 2012. Aligning building information model tools and construction management methods. *Automation in Construction*, 22, 605–613. <https://doi.org/10.1016/j.autcon.2011.12.011>
- Henry, A.; Tizani, W.; Oti, A. H.; Tizani, W.; Henry, A.; & Tizani, W. 2015. BIM extension for the sustainability appraisal of conceptual steel design. *Advanced Engineering Informatics*, 29(1), 28–46. <https://doi.org/10.1016/j.aei.2014.09.001>
- Howard, R.; Bjork, B.-C.; Björk, B. C. 2008. Building information modelling - Experts' views on standardisation and industry deployment. *Advanced Engineering Informatics*, 22(2), 271–280. <https://doi.org/10.1016/j.aei.2007.03.001>
- Hu, Z.-Z.; Zhang, X.-Y.; Wang, H.-W.; Kassem, M. 2016. Improving interoperability between architectural and structural design models: An industry foundation classes-based approach with web-based tools. *Automation in Construction*, 66, 29–42. <https://doi.org/10.1016/j.autcon.2016.02.001>
- Huang, S.-F.; Chen, C.; Dzung, R.-J. 2011. Design of Track Alignment Using Building Information Modeling. *Journal of Transportation Engineering-ASCE*, 137(11), 823–830. [https://doi.org/10.1061/\(ASCE\)TE.1943-5436.0000287](https://doi.org/10.1061/(ASCE)TE.1943-5436.0000287)
- Ilhan, B.; Yaman, H. 2016. Green building assessment tool (GBAT) for integrated BIM-based design decisions. *Automation in Construction*, 70, 26–37. <https://doi.org/10.1016/j.autcon.2016.05.001>
- Inyim, P.; Rivera, J.; Zhu, Y. 2015. Integration of Building Information Modeling and Economic and Environmental Impact Analysis to Support Sustainable Building Design. *Journal of Management in Engineering*, 31(1, SI), 1–10. [https://doi.org/10.1061/\(ASCE\)ME.1943-5479.0000308](https://doi.org/10.1061/(ASCE)ME.1943-5479.0000308)
- Irizarry, J.; Karan, E. P.; Jalaei, F. 2013. Integrating BIM and GIS to improve the visual monitoring of construction supply chain management. *Automation in Construction*, 31, 241–254. <https://doi.org/10.1016/j.autcon.2012.12.005>
- Jalaei, F.; Jrade, A. 2015. Integrating Building Information Modeling (BIM) and LEED system at the conceptual design stage of sustainable buildings. *Sustainable Cities and Society*, 18, 95–107. <https://doi.org/10.1016/j.scs.2015.06.007>
- Jaradat, S.; Whyte, J.; Luck, R. 2013. Professionalism in digitally mediated project work. *Building Research and Information*, 41(1, SI), 51–59. <https://doi.org/10.1080/09613218.2013.743398>
- Jiang, L.; Leicht, R. M. 2015. Automated Rule-Based Constructability Checking: Case Study of Formwork. *Journal of Management in Engineering*, 31(1, SI), 1–10. [https://doi.org/10.1061/\(ASCE\)ME.1943-5479.0000304](https://doi.org/10.1061/(ASCE)ME.1943-5479.0000304)
- Johansson, M.; Roupe, M.; Bosch-Sijtsema, P. 2015. Real-time visualization of building information models (BIM). *Automation in Construction*, 54, 69–82. <https://doi.org/10.1016/j.autcon.2015.03.018>
- Jrade, A.; Jalaei, F. 2013. Integrating building information modelling with sustainability to design building projects at the conceptual stage. *Building Simulation*, 6(4), 429–444. <https://doi.org/10.1007/s12273-013-0120-0>
- Jun, H.; Lim, N.; Kim, M. 2015. BIM-based Carbon Dioxide Emission Quantity Assessment Method in Korea. *Journal of Asian Architecture and Building Engineering*, 14(3), 569–576.
- Jung, J.; Hong, S.; Yoon, S.; Kim, J.; Heo, J. 2015. Automated 3D Wireframe Modeling of Indoor Structures from Point Clouds Using Constrained Least-Squares Adjustment for As-Built BIM. *Journal of Computing in Civil Engineering*, 30(1), 4015074. [https://doi.org/10.1061/\(ASCE\)CP.1943-5487.0000556](https://doi.org/10.1061/(ASCE)CP.1943-5487.0000556)
- Jung, W.; Lee, G. 2016. Slim BIM Charts for Rapidly Visualizing and Quantifying Levels of BIM Adoption and Implementation. *Journal of Computing in Civil Engineering*, 30(4). [https://doi.org/10.1061/\(ASCE\)CP.1943-5487.0000554](https://doi.org/10.1061/(ASCE)CP.1943-5487.0000554)
- Kang, L. S.; Kim, H. S.; Moon, H. S.; Kim, S.-K. K. 2016. Managing construction schedule by telepresence: Integration of site video feed with an active nD CAD simulation. *Automation in Construction*, 68, 32–43. <https://doi.org/10.1016/j.autcon.2016.04.003>
- Kang, T. W. 2017. Object composite query method using IFC and LandXML based on BIM linkage model. *Automation in Construction*, 76, 14–23. <https://doi.org/10.1016/j.autcon.2017.01.008>
- Kang, T. W.; Hong, C. H. (2015). A study on software architecture for effective BIM/GIS-based facility management data integration. *Automation in Construction*, 54, 25–38. <https://doi.org/10.1016/j.autcon.2015.03.019>
- Karan, E. P.; Irizarry, J. 2015. Extending BIM interoperability to preconstruction operations using geospatial analyses and semantic web services. *Automation in Construction*, 53, 1–12. <https://doi.org/10.1016/j.autcon.2015.02.012>
- Kim, C. C.; Son, H.; Kim, C. C. 2013. Automated construction progress measurement using a 4D building information model and 3D data. *Automation in Construction*, 31, 75–82. <https://doi.org/10.1016/j.autcon.2012.11.041>
- Kim, H.; Anderson, K. 2013. Energy Modeling System Using Building Information Modeling Open Standards. *Journal of Computing in Civil Engineering*, 27(3), 203–211. [https://doi.org/10.1061/\(ASCE\)CP.1943-5487.0000215](https://doi.org/10.1061/(ASCE)CP.1943-5487.0000215)

- Kim, H.; Anderson, K.; Lee, S.; Hildreth, J. 2013. Generating construction schedules through automatic data extraction using open BIM (building information modeling) technology. *Automation in Construction*, 35, 285–295. <https://doi.org/10.1016/j.autcon.2013.05.020>
- Kim, H.; Lee, H.-S.; Park, M.; Chung, B.; Hwang, S. 2015. Information Retrieval Framework for Hazard Identification in Construction. *Journal of Computing in Civil Engineering*, 29(3), 1–10. [https://doi.org/10.1061/\(ASCE\)CP.1943-5487.0000340](https://doi.org/10.1061/(ASCE)CP.1943-5487.0000340)
- Kim, H.; Shen, Z.; Kim, I.; Kim, K.; Stumpf, A.; Yu, J. 2015. BIM IFC information mapping to building energy analysis (BEA) model with manually extended material information. *Automation in Construction*, 68, 183–193. <https://doi.org/10.1016/j.autcon.2016.04.002>
- Kim, H.; Shen, Z.; Moon, H.; Ju, K.; Choi, W. 2016. Developing a 3D Intelligent Object Model for the Application of Construction Planning/Simulation in a Highway Project. *KSCE Journal of Civil Engineering*, 20(2), 538–548. <https://doi.org/10.1007/s12205-015-0463-4>
- Kim, I.; Kim, J.; Seo, J. 2012. Development of an IFC-based IDF Converter for Supporting Energy Performance Assessment in the Early Design Phase. *Journal of Asian Architecture and Building Engineering*, 11(2), 313–320.
- Kim, J. B.; Jeong, W.; Clayton, M. J.; Haberl, J. S.; Yan, W. 2015. Developing a physical BIM library for building thermal energy simulation. *Automation in Construction*, 50(C), 16–28. <https://doi.org/10.1016/j.autcon.2014.10.011>
- Kim, J. I.; Jung, J.; Fischer, M.; Orr, R. 2015. BIM-based decision-support method for master planning of sustainable large-scale developments. *Automation in Construction*, 58, 95–108. <https://doi.org/10.1016/j.autcon.2015.07.003>
- Kim, J.; Jeon, B. H. 2012. Design Integrated Parametric Modeling Methodology for Han-ok. *Journal of Asian Architecture and Building Engineering*, 11(2), 239–243.
- Kim, J.; Fischer, M.; Kunz, J.; Levitt, R. 2014. Sharing of Temporary Structures: Formalization and Planning Application. *Automation in Construction*, 43, 187–194. <https://doi.org/10.1016/j.autcon.2014.03.018>
- Kim, J.-L. 2012. Use of BIM for Effective Visualization Teaching Approach in Construction Education. *Journal of Professional Issues in Engineering Education and Practice*, 138(3), 214–223. [https://doi.org/10.1061/\(ASCE\)EI.1943-5541.0000102](https://doi.org/10.1061/(ASCE)EI.1943-5541.0000102)
- Kim, K.; Yu, J. 2016a. A Process to Divide Curved Walls in IFC-BIM into Segmented Straight Walls for Building Energy Analysis. *Journal of Civil Engineering and Management*, 22(3), 333–345. <https://doi.org/10.3846/13923730.2014.897975>
- Kim, K.; Yu, J. 2016b. BIM-based Building Energy Load Calculation System for Designers. *KSCE Journal of Civil Engineering*, 20(2), 549–563. <https://doi.org/10.1007/s12205-015-1625-0>
- Kim, K.; Cho, Y.; Zhang, S. 2016. Integrating work sequences and temporary structures into safety planning: Automated scaffolding-related safety hazard identification and prevention in BIM. *Automation in Construction*, 70, 128–142. <https://doi.org/10.1016/j.autcon.2016.06.012>
- Kim, M.-K.; Cheng, J. C. P.; Sohn, H.; Chang, C.-C. 2015. A framework for dimensional and surface quality assessment of precast concrete elements using BIM and 3D laser scanning. *Automation in Construction*, 49(B, SI), 225–238. <https://doi.org/10.1016/j.autcon.2014.07.010>
- Kim, M.-K.; Wang, Q.; Park, J.-W.; Cheng, J. C. P.; Sohn, H.; Chang, C.-C. 2016. Automated dimensional quality assurance of full-scale precast concrete elements using laser scanning and BIM. *Automation in Construction*, 72, 102–114. <https://doi.org/10.1016/j.autcon.2016.08.035>
- Kim, S.; Park, C. H.; Chin, S. 2016. Assessment of BIM acceptance degree of Korean AEC participants. *KSCE Journal of Civil Engineering*, 20(4), 1163–1177. <https://doi.org/10.1007/s12205-015-0647-y>
- Knight, D.; Roth, S.; Rosen, S. L. 2010. Using BIM In HVAC Design. *Ashrae Journal*, 52(6), 24+.
- Knight, M. D. 2008. Teams, contracts, & BIM. *Ashrae Journal*, 50(9), 72+.
- Kota, S.; Haberl, J. S.; Clayton, M. J.; Yan, W. 2014. Building Information Modeling (BIM)-based daylighting simulation and analysis. *Energy and Buildings*, 81, 391–403. <https://doi.org/10.1016/j.enbuild.2014.06.043>
- Kovacic, I.; Filzmoser, M.; Kiesel, K.; Oberwinter, L.; Mahdavi, A. 2015. BIM teaching as support to integrated design practice. *Gradevinar*, 67(6), 537–546.
- Kraatz, J. A.; Hampson, K. D. 2013. Brokering innovation to better leverage R&D investment. *Building Research and Information*, 41(2), 187–197. <https://doi.org/10.1080/09613218.2013.749771>
- Kreiner, H.; Passer, A.; Wallbaum, H. 2015. A new systemic approach to improve the sustainability performance of office buildings in the early design stage. *Energy and Buildings*, 109, 385–396. <https://doi.org/10.1016/j.enbuild.2015.09.040>
- Kulahcioglu, T.; Dang, J.; Toklu, C. 2012. A 3D analyzer for BIM-enabled Life Cycle Assessment of the whole process of construction. *HVAC&R Research*, 18(September), 283–293. <https://doi.org/10.1080/10789669.2012.634264>
- Kumar, S. S.; Cheng, J. C. P. 2015. A BIM-based automated site layout planning framework for congested construction sites. *Automation in Construction*, 59, 24–37. <https://doi.org/10.1016/j.autcon.2015.07.008>
- Lee, C.; Son, J.; Lee, S. 2014. A System Model for Analyzing and Accumulating Construction Work Crew's Productivity Data Using Image Processing Technologies. *Journal of Asian Architecture and Building Engineering*, 13(3), 547–554.
- Lee, D.; Cha, G.; Park, S. 2016. A Study on Data Visualization of Embedded Sensors for Building Energy Monitoring using BIM. *International Journal of Precision Engineering and Manufacturing*, 17(6), 807–814. <https://doi.org/10.1007/s12541-016-0099-4>
- Lee, G.; Park, H. K.; Won, J. 2012. D-3 City project - Economic impact of BIM-assisted design validation. *Automation in Construction*, 22(SI), 577–586. <https://doi.org/10.1016/j.autcon.2011.12.003>
- Lee, G.; Park, Y. H.; Ham, S. 2013. Extended Process to Product Modeling (xPPM) for integrated and seamless IDM and MVD development. *Advanced Engineering Informatics*, 27(4), 636–651. <https://doi.org/10.1016/j.aei.2013.08.004>
- Lee, H. W.; Oh, H.; Kim, Y.; Choi, K.; Woo, H. 2015. Quantitative analysis of warnings in building information modeling (BIM). *Automation in Construction*, 51, 23–31. <https://doi.org/10.1016/j.autcon.2014.12.007>
- Lee, S.; Yu, J. 2016. Comparative Study of BIM Acceptance between Korea and the United States. *Journal of Construction Engineering and Management*, 142(3). [https://doi.org/10.1061/\(ASCE\)CO.1943-7862.0001076](https://doi.org/10.1061/(ASCE)CO.1943-7862.0001076)
- Lee, S.; Bae, J.; Cho, Y. S. 2012. Efficiency analysis of Set-based Design with structural building information modeling (S-BIM) on high-rise building structures. *Automation in Construction*, 23, 20–32. <https://doi.org/10.1016/j.autcon.2011.12.008>

- Lee, S.; Tae, S.; Roh, S.; Kim, T. 2015. Green Template for Life Cycle Assessment of Buildings Based on Building Information Modeling: Focus on Embodied Environmental Impact. *Sustainability*, 7(12), 16498–16512. <https://doi.org/10.3390/su71215830>
- Lewis, A. M.; Valdes-Vasquez, R.; Shealy, T. 2015. BIM Energy Modeling: Case Study of a Teaching Module for Sustainable Design and Construction Courses. *Journal of Professional Issues in Engineering Education and Practice*, 141(2, SI), 1–6. [https://doi.org/10.1061/\(ASCE\)EI.1943-5541.0000230](https://doi.org/10.1061/(ASCE)EI.1943-5541.0000230)
- Li, N.; Becerik-Gerber, B.; Krishnamachari, B.; Soibelman, L. 2014. A BIM centered indoor localization algorithm to support building fire emergency response operations. *Automation in Construction*, 42, 78–89. <https://doi.org/10.1016/j.autcon.2014.02.019>
- Lin, Y.-C. 2014. Construction 3D BIM-based knowledge management system: A case study. *Journal of Civil Engineering and Management*, 20(2), 186–200. <https://doi.org/10.3846/13923730.2013.801887>
- Liu, H.; Al-Hussein, M.; Lu, M. 2015. BIM-based integrated approach for detailed construction scheduling under resource constraints. *Automation in Construction*, 53, 29–43. <https://doi.org/10.1016/j.autcon.2015.03.008>
- Liu, S.; Meng, X.; Tam, C. 2015. Building information modeling based building design optimization for sustainability. *Energy & Buildings*, 105, 139–153. <https://doi.org/10.1016/j.enbuild.2015.06.037>
- Liu, Z.; Osniani, M.; Demian, P.; Baldwin, A. 2015. A BIM-aided construction waste minimisation framework. *Automation in Construction*, 59(2015), 1–23. <https://doi.org/10.1016/j.autcon.2015.07.020>
- Love, P. E. D.; Liu, J.; Matthews, J.; Sing, C.; Smith, J. 2015. Future proofing PPPs: Life-cycle performance measurement and Building Information Modelling. *Automation in Construction*, 56, 26–35. <https://doi.org/10.1016/j.autcon.2015.04.008>
- Lu, H.; Wang, H.; Xie, Y.; Li, H. 2016. Construction Material Safety-Stock Determination Under Nonstationary Stochastic Demand and Random Supply Yield. *IEEE Transactions on Engineering Management*, 63(2), 201–212. <https://doi.org/10.1109/TEM.2016.2536146>
- Lu, W.; Fung, A.; Peng, Y.; Liang, C.; Rowlinson, S. 2014. Cost-benefit analysis of Building Information Modeling implementation in building projects through demystification of time-effort distribution curves. *Building and Environment*, 82, 317–327. <https://doi.org/10.1016/j.buildenv.2014.08.030>
- Mahalingam, A.; Yadav, A. K.; Varaprasad, J. 2015. Investigating the Role of Lean Practices in Enabling BIM Adoption: Evidence from Two Indian Cases. *Journal of Construction Engineering and Management*, 141(7). [https://doi.org/10.1061/\(ASCE\)CO.1943-7862.0000982](https://doi.org/10.1061/(ASCE)CO.1943-7862.0000982)
- Malekitabar, H.; Ardeshir, A.; Sebt, M. H.; Stouffs, R. 2016. Construction safety risk drivers: A BIM approach. *Safety Science*, 82, 445–455. <https://doi.org/10.1016/j.ssci.2015.11.002>
- Marsilio, M.; Cappellaro, G.; Cuccurullo, C. 2011. The Intellectual Structure Of Research Into PPPs: A bibliometric analysis. *Public Management Review*, 13(6), 763–782. <https://doi.org/10.1080/14719037.2010.539112>
- Marzouk, M.; Abdelaty, A. 2014a. BIM-based framework for managing performance of subway stations. *Automation in Construction*, 41, 70–77. <https://doi.org/10.1016/j.autcon.2014.02.004>
- Marzouk, M.; Abdelaty, A. 2014b. Monitoring thermal comfort in subways using building information modeling. *Energy and Buildings*, 84, 252–257. <https://doi.org/10.1016/j.enbuild.2014.08.006>
- Marzouk, M.; Abubakr, A. 2016. Decision support for tower crane selection with building information models and genetic algorithms. *Automation in Construction*, 61, 1–15. <https://doi.org/10.1016/j.autcon.2015.09.008>
- Matthews, J.; Love, P. E. D.; Heinemann, S.; Chandler, R.; Rumsey, C.; Olatunji, O. 2015. Real time progress management: Re-engineering processes for cloud-based BIM in construction. *Automation in Construction*, 58, 38–47. <https://doi.org/10.1016/j.autcon.2015.07.004>
- McGuire, B.; Atadero, R.; Clevenger, C.; Ozbek, M. 2016. Bridge Information Modeling for Inspection and Evaluation. *Journal of Bridge Engineering*, 21(4). [https://doi.org/10.1061/\(ASCE\)BE.1943-5592.0000850](https://doi.org/10.1061/(ASCE)BE.1943-5592.0000850)
- Migilinskas, D.; Balionis, E.; Dziugaite-Tumeniene, R.; & Siupsinskas, G. 2016. An Advanced Multi-Criteria Evaluation Model of the Rational Building Energy Performance. *Journal of Civil Engineering and Management*, 22(6), 844–851. <https://doi.org/10.3846/13923730.2016.1194316>
- Mom, M.; Tsai, M.-H.; Hsieh, S.-H. 2014. Developing critical success factors for the assessment of BIM technology adoption: Part II. Analysis and results. *Journal of the Chinese Institute of Engineers*, 37(7), 859–868. <https://doi.org/10.1080/02533839.2014.888798>
- Moon, H.; Kim, H.; Kim, C.; Kang, L. 2014. Development of a schedule-workspace interference management system simultaneously considering the overlap level of parallel schedules and workspaces. *Automation in Construction*, 39, 93–105. <https://doi.org/10.1016/j.autcon.2013.06.001>
- Motamedi, A.; Mostafa, M.; Hammad, A.; Soltani, M. M.; Hammad, A. 2013. Localization of RFID-equipped assets during the operation phase of facilities. *Advanced Engineering Informatics*, 27(4), 566–579. <https://doi.org/10.1016/j.aei.2013.07.001>
- Nahangi, M.; Haas, C. T. 2014. Automated 3D compliance checking in pipe spool fabrication. *Advanced Engineering Informatics*, 28(4), 360–369. <https://doi.org/10.1016/j.aei.2014.04.001>
- Nahangi, M.; Haas, C. T. 2016. Skeleton-based discrepancy feedback for automated realignment of industrial assemblies. *Automation in Construction*, 61, 147–161. <https://doi.org/10.1016/j.autcon.2015.10.014>
- Nassar, K. 2012. Assessing Building Information Modeling Estimating Techniques Using Data from the Classroom. *Journal of Professional Issues in Engineering Education and Practice*, 138(3), 171–180. [https://doi.org/10.1061/\(ASCE\)EI.1943-5541.0000101](https://doi.org/10.1061/(ASCE)EI.1943-5541.0000101)
- Nath, T.; Attarzadeh, M.; Tiong, R. L. K.; Chidambaram, C.; Yu, Z. 2015. Productivity improvement of precast shop drawings generation through BIM-based process re-engineering. *Automation in Construction*, 54, 54–68. <https://doi.org/10.1016/j.autcon.2015.03.014>
- Neath, S.; Hulse, R.; Codd, A. 2014. Building information modelling in practice: Transforming Gatwick airport, UK. *Proceedings of the Institution of Civil Engineers: Civil Engineering*, 167(2), 61–87. <https://doi.org/10.1680/cien.13.00018>
- Neto, de C. e S. D.; Cruz, C. O.; Rodrigues, F.; Silva, P. 2016. Bibliometric Analysis of PPP and PFI Literature: Overview of 25 Years of Research. *Journal of Construction Engineering and Management*, 142(2004), 6016002. [https://doi.org/10.1061/\(ASCE\)CO.1943-7862.0001163](https://doi.org/10.1061/(ASCE)CO.1943-7862.0001163)



- Oh, M.; Lee, J.; Wan, S.; Jeong, Y. 2015. Integrated system for BIM-based collaborative design. *Automation in Construction*, 58, 196–206. <https://doi.org/10.1016/j.autcon.2015.07.015>
- Olatunji, S. O.; Olawumi, T. O.; Awodele, O. A. 2017. Achieving Value for Money (VFM) in Construction Projects. *Journal of Civil and Environmental Research*, 9(2), 54–64. Retrieved from <http://iiste.org/Journals/index.php/CER/article/viewFile/35270/36293>
- Olatunji, S.O.; Olawumi, T.O.; Aje, I.O. 2017. Rethinking Partnering among Quantity Surveying Firms in Nigeria. *Journal of Construction Engineering and Management*. [https://doi.org/10.1061/\(ASCE\)CO.1943-7862.0001394](https://doi.org/10.1061/(ASCE)CO.1943-7862.0001394)
- Olatunji, S. O.; Olawumi, T. O.; Odeyinka, H. A. 2016. Nigeria's Public Procurement Law- Puissant Issues and Projected Amendments. *Public Policy and Administration Research- The International Institute for Science, Technology and Education (IISTE)*, 6(6), 73–85.
- Olatunji, S. O.; Olawumi, T. O.; Ogunsemi, D. R. 2016. Demystifying Issues Regarding Public Private Partnerships (PPP). *Journal of Economics and Sustainable Development- The International Institute for Science, Technology and Education (IISTE)*, 7(11), 1–22.
- Olawumi, T. O.; Ayegun, O. A. 2016. Are Quantity Surveyors competent to value for Civil Engineering Works? Evaluating QSs' competencies and militating factors. *Journal of Education and Practice- The International Institute for Science, Technology and Education (IISTE)*, 7(16), 1–16.
- Olawumi, T. O. 2016. Establishment of Critical Causal Factors for Electrical Cost Estimating Techniques. *World Scientific News*, 53(3), 354–366.
- Olawumi, T. O.; Akinrata, E. B.; Arijeloye, B. T. 2016. Value Management – Creating Functional Value for Construction Project: An Exploratory Study. *World Scientific News*, 54, 40–59.
- Oti, A. H.; Tizani, W.; Abanda, F. H.; Jaly-Zada, A.; Tah, J. H. M. 2016. Structural sustainability appraisal in BIM. *Automation in Construction*, 69, 44–58. <https://doi.org/10.1016/j.autcon.2016.05.019>
- Oti, A. H.; Tizani, W. 2015. BIM extension for the sustainability appraisal of conceptual steel design. *Advanced Engineering Informatics*, 29(1), 28–46. <https://doi.org/10.1016/j.aei.2014.09.001>
- Pareto, V. 1964. Cours d'économie politique. G. H. Bousquet, G. Busino, eds. Oeuvres Complètes de Vilfredo Pareto, Vol. 1. Librairie Droz, Geneva. [Originally published in 1896.]
- Park, J.; Cai, H. 2017. WBS-based dynamic multi-dimensional BIM database for total construction as-built documentation. *Automation in Construction*, 77, 15–23. <https://doi.org/10.1016/j.autcon.2017.01.021>
- Peterson, F.; Hartmann, T.; Fruchter, R.; Fischer, M. 2011. Teaching construction project management with BIM support: Experience and lessons learned. *Automation in Construction*, 20(2), 115–125. <https://doi.org/10.1016/j.autcon.2010.09.009>
- Pikas, E.; Sacks, R.; Hazzan, O. 2013. Building Information Modeling Education for Construction Engineering and Management. II: Procedures and Implementation Case Study. *Journal of Construction Engineering and Management*, 139(11). [https://doi.org/10.1061/\(ASCE\)CO.1943-7862.0000765](https://doi.org/10.1061/(ASCE)CO.1943-7862.0000765)
- Pilehchian, B.; Staub-French, S.; Nepal, M. P. 2015. A conceptual approach to track design changes within a multi-disciplinary building information modeling environment. *Canadian Journal of Civil Engineering*, 42(2), 139–152. <https://doi.org/10.1139/cjce-2014-0078>
- Poirier, E. A.; Staub-French, S.; Forgues, D. 2015. Measuring the impact of BIM on labor productivity in a small specialty contracting enterprise through action-research. *Automation in Construction*, 58, 74–84. <https://doi.org/10.1016/j.autcon.2015.07.002>
- Porwal, A.; Hewage, K. N. 2012. Building Information Modeling-Based Analysis to Minimize Waste Rate of Structural Reinforcement. *Journal of Construction Engineering and Management-ASCE*, 138(8), 943–954. [https://doi.org/10.1061/\(ASCE\)CO.1943-7862.0000508](https://doi.org/10.1061/(ASCE)CO.1943-7862.0000508)
- Ramos-Rodríguez, A.-R.; Ruíz-Navarro, J. 2004. Changes in the intellectual structure of strategic management research: a bibliometric study of the Strategic Management Journal, 1980–2000. *Strategic Management Journal*, 25(10), 981–1004. <https://doi.org/10.1002/smj.397>
- Redmond, A.; Hore, A.; Alshawi, M.; West, R. 2012. Exploring how information exchanges can be enhanced through Cloud BIM. *Automation in Construction*, 24, 175–183. <https://doi.org/10.1016/j.autcon.2012.02.003>
- Rezgui, Y.; Beach, T.; Rana, O. 2013. A Governance Approach for BIM Management Across Lifecycle and Supply Chains Using Mixed-Modes of Information Delivery. *Journal of Civil Engineering and Management*, 19(2), 239–258. <https://doi.org/10.3846/13923730.2012.760480>
- Robinson, C. 2007. Structural BIM: Discussion, case studies and latest developments. *Structural Design of Tall and Special Buildings*, 16(4), 519–533. <https://doi.org/10.1002/tal.417>
- Ryu, H.-S.; Park, K.-S. 2016. A Study on the LEED Energy Simulation Process Using BIM. *Sustainability*, 8(2). <https://doi.org/10.3390/su8020138>
- Sacks, R.; Barak, R. 2010. Teaching Building Information Modeling as an Integral Part of Freshman Year Civil Engineering Education. *Journal of Professional Issues in Engineering Education and Practice*, 136(1), 30–38. [https://doi.org/10.1061/\(ASCE\)EI.1943-5541.0000003](https://doi.org/10.1061/(ASCE)EI.1943-5541.0000003)
- Sacks, R.; Pikas, E. 2013. Building Information Modeling Education for Construction Engineering and Management. I: Industry Requirements, State of the Art, and Gap Analysis. *Journal of Construction Engineering and Management*, 139(11), 1–12. [https://doi.org/10.1061/\(ASCE\)CO.1943-7862.0000759](https://doi.org/10.1061/(ASCE)CO.1943-7862.0000759)
- Sacks, R.; Koskela, L.; Dave, B. A.; Owen, R. 2010. Interaction of Lean and Building Information Modeling in Construction. *Journal of Construction Engineering and Management-ASCE*, 136(9), 968–980. [https://doi.org/10.1061/\(ASCE\)CO.1943-7862.0000203](https://doi.org/10.1061/(ASCE)CO.1943-7862.0000203)
- Sacks, R.; Radosavljevic, M.; Barak, R. 2010. Requirements for building information modeling based lean production management systems for construction. *Automation in Construction*, 19(5), 641–655. <https://doi.org/10.1016/j.autcon.2010.02.010>
- Salleh, H.; Fung, W. P. 2014. Building Information Modelling application: focus-group discussion. *Gradevinar*, 66(8), 705–714.
- Sampaio, Z. A. 2015. The Introduction of the BIM Concept in Civil Engineering Curriculum. *International Journal of Engineering Education*, 31(1B), 302–315. Retrieved from <http://search.ebscohost.com/login.aspx?direct=true&db=eue&AN=101083661&site=ehost-live>



- Samuelson, O.; Björk, B. 2016. Adoption Processes for EDM, EDI and BIM Technologies in the Construction Industry. *Journal of Civil Engineering and Management*, 19(1), 172–187. <https://doi.org/10.3846/13923730.2013.801888>
- Samuelson, O.; Björk, B. C. 2014. A longitudinal study of the adoption of IT technology in the Swedish building sector. *Automation in Construction*, 37, 182–190. <https://doi.org/10.1016/j.autcon.2013.10.006>
- Santos, R.; Costa, A. A.; Grilo, A. 2017. Bibliometric analysis and review of Building Information Modelling literature published between 2005 and 2015. *Automation in Construction*, 80, 118–136. <https://doi.org/10.1016/j.autcon.2017.03.005>
- Shiau, Y. C.; YuChi, C.; ChiHong, C.; PoYen, W. 2012. Using Ecotect to Improve Energy Conservation for Older Buildings. *Research Journal of Chemistry and Environment*, 16(2), 162–171.
- Shin, Y.; Cho, K. 2015. BIM Application to Select Appropriate Design Alternative with Consideration of LCA and LCCA. *Mathematical Problems in Engineering*. <https://doi.org/10.1155/2015/281640>
- Solihin, W.; Eastman, C.; Lee, Y.-C. 2017. Multiple representation approach to achieve high-performance spatial queries of 3D BIM data using a relational database. *Automation in Construction*. <https://doi.org/10.1016/j.autcon.2017.03.014>
- Solnosky, R.; Parfitt, M. K.; Holland, R. J. 2014. IPD and BIM-Focused Capstone Course Based on AEC Industry Needs and Involvement. *Journal of Professional Issues in Engineering Education and Practice*, 140(4). [https://doi.org/10.1061/\(ASCE\)EI.1943-5541.0000157](https://doi.org/10.1061/(ASCE)EI.1943-5541.0000157)
- Succar, B. 2009. Building information modelling framework: A research and delivery foundation for industry stakeholders. *Automation in Construction*, 18(3), 357–375. <https://doi.org/10.1016/j.autcon.2008.10.003>
- Succar, B.; Kassem, M. 2015. Macro-BIM adoption: Conceptual structures. *Automation in Construction*, 57, 64–79. <https://doi.org/10.1016/j.autcon.2015.04.018>
- Succar, B.; Sher, W.; Williams, A. 2013. An integrated approach to BIM competency assessment, acquisition and application. *Automation in Construction*, 35, 174–189. <https://doi.org/10.1016/j.autcon.2013.05.016>
- Sun, J.; Wang, L. 2015. *The Interaction Between BIM's Promotion and Interest Game under Information Asymmetry*. *Journal of Industrial and Management Optimization*, 11(4), 1301–1319. <https://doi.org/10.3934/jimo.2015.11.1301>
- Tan, Y.; Song, Y.; Liu, X.; Wang, X.; Cheng, J. C. P. 2017. A BIM-based framework for lift planning in topsides disassembly of offshore oil and gas platforms. *Automation in Construction*, 79, 19–30. <https://doi.org/10.1016/j.autcon.2017.02.008>
- Tashakkori, H.; Rajabifard, A.; Kalantari, M. 2015. A new 3D indoor/outdoor spatial model for indoor emergency response facilitation. *Building and Environment*, 89(1), 170–182. <https://doi.org/10.1016/j.buildenv.2015.02.036>
- Taylor, J. E.; Bernstein, P. G. 2009. Paradigm Trajectories of Building Information Modeling Practice in Project Networks. *Journal of Management in Engineering*, 25(2), 69–76. [https://doi.org/10.1061/\(ASCE\)0742-597X\(2009\)25:2\(69\)](https://doi.org/10.1061/(ASCE)0742-597X(2009)25:2(69))
- Thompson, B. P.; Bank, L. C. 2010. Use of system dynamics as a decision-making tool in building design and operation. *Building and Environment*, 45(4), 1006–1015. <https://doi.org/10.1016/j.buildenv.2009.10.008>
- Tsai, M. Md, A. M.; Kang, S.-C.; Hsieh, S.; Matin, A. 2014. Workflow re-engineering of design-build projects using a BIM tool. *Journal of the Chinese Institute of Engineers*, 37(1), 88–102. <https://doi.org/10.1080/02533839.2012.751302>
- Tsai, M.-H.; Mom, M.; Hsieh, S.-H. 2014. Developing critical success factors for the assessment of BIM technology adoption: part I. Methodology and survey. *Journal of the Chinese Institute of Engineers*, 37(7), 845–858. <https://doi.org/10.1080/02533839.2014.888798>
- Tserng, H.-P.; Ho, S.-P.; Jan, S.-H. 2014. Developing BIM-Assisted As-Built Schedule Management System for General Contractors. *Journal of Civil Engineering and Management*, 20(1), 47–58. <https://doi.org/10.3846/13923730.2013.851112>
- Turkan, Y.; Bosche, F.; Haas, C. T.; Haas, R. 2013. Toward Automated Earned Value Tracking Using 3D Imaging Tools. *Journal of Construction Engineering and Management-ASCE*, 139(4), 423–433. [https://doi.org/10.1061/\(ASCE\)CO.1943-7862.0000629](https://doi.org/10.1061/(ASCE)CO.1943-7862.0000629)
- Volk, R.; Stengel, J.; Schultmann, F. 2014. Building Information Modeling (BIM) for existing buildings - literature review and future needs. *Automation in Construction*, 38, 204. <https://doi.org/10.1016/j.autcon.2013.10.023>
- Wang, L.; Leite, F. 2014. Process-Oriented Approach of Teaching Building Information Modeling in Construction Management. *Journal of Professional Issues in Engineering Education and Practice*, 140(4). [https://doi.org/10.1061/\(ASCE\)EI.1943-5541.0000203](https://doi.org/10.1061/(ASCE)EI.1943-5541.0000203)
- Wang, L.; Leite, F. 2016. Process Knowledge Capture in BIM-Based Mechanical, Electrical, and Plumbing Design Coordination Meetings. *Journal of Computing in Civil Engineering*, 30(2). [https://doi.org/10.1061/\(ASCE\)CP.1943-5487.0000484](https://doi.org/10.1061/(ASCE)CP.1943-5487.0000484)
- Wang, S.-H.; Wang, W.-C.; Wang, K.-C.; Shih, S.-Y. 2015. Applying building information modeling to support fire safety management. *Automation in Construction*, 59, 158–167. <https://doi.org/10.1016/j.autcon.2015.02.001>
- Wang, W.-C.; Weng, S.-W.; Wang, S.-H.; Chen, C.-Y. 2014. Integrating building information models with construction process simulations for project scheduling support. *Automation in Construction*, 37, 68–80. <https://doi.org/10.1016/j.autcon.2013.10.009>
- Wang, X.; Yung, P.; Luo, H.; Truijens, M. 2014. An innovative method for project control in LNG project through 5D CAD: A case study. *Automation in Construction*, 45, 126–135. <https://doi.org/10.1016/j.autcon.2014.05.011>
- Watson, A. 2011. Digital buildings - Challenges and opportunities. *Advanced Engineering Informatics*, 25(4), 573–581. <https://doi.org/10.1016/j.aei.2011.07.003>
- Welle, B.; Rogers, Z.; Fischer, M. 2012. BIM-Centric Daylight Profiler for Simulation (BDP4SIM): A Methodology for Automated Product Model Decomposition and Re-composition for Climate-Based Daylighting Simulation. *Building and Environment*, 58, 114–134. <https://doi.org/10.1016/j.buildenv.2012.06.021>
- Wetzel, E. M.; Thabet, W. Y. 2015. The use of a BIM-based framework to support safe facility management processes. *Automation in Construction*, 60, 12–24. <https://doi.org/10.1016/j.autcon.2015.09.004>
- Won, J.; Lee, G. 2016. How to tell if a BIM project is successful: A goal-driven approach. *Automation in Construction*, 69, 34–43. <https://doi.org/10.1016/j.autcon.2016.05.022>
- Won, J.; Cheng, J. C. P.; Lee, G. 2016. Quantification of construction waste prevented by BIM-based design validation: Case studies in South Korea. *Waste Management*, 49, 170–180. <https://doi.org/10.1016/j.wasman.2015.12.026>
- Won, J.; Lee, G.; Dossick, C.; Messner, J. 2013. Where to Focus for Successful Adoption of Building Information Modeling within Organization. *Journal of Construction Engineering and Management*, 139(11). [https://doi.org/10.1061/\(ASCE\)CO.1943-7862.0000731](https://doi.org/10.1061/(ASCE)CO.1943-7862.0000731)

- Wong, J. K. W.; Zhou, J. 2015. Enhancing environmental sustainability over building life cycles through green BIM: A review. *Automation in Construction*, 57, 156–165. <https://doi.org/10.1016/j.autcon.2015.06.003>
- Wong, J. K.-W.; Kuan, K.-L. 2014. Implementing ‘BEAM Plus’ for BIM-based sustainability analysis. *Automation in Construction*, 44, 163–175. <https://doi.org/10.1016/j.autcon.2014.04.003>
- Wong, P. F.; Salleh, H.; Rahim, F. A. M. 2015. A Relationship Framework for Building Information Modeling (BIM) Capability in Quantity Surveying Practice and Project Performance. *Informes De La Construcción*, 67(540). <https://doi.org/10.3989/ic.15.007>
- Wu, W.; Issa, R. R. A. 2014. BIM Education and Recruiting: Survey-Based Comparative Analysis of Issues, Perceptions, and Collaboration Opportunities. *Journal of Professional Issues in Engineering Education and Practice*, 140(2). [https://doi.org/10.1061/\(ASCE\)EI.1943-5541.0000186](https://doi.org/10.1061/(ASCE)EI.1943-5541.0000186)
- Wu, W.; Issa, R. R. A. 2015. BIM Execution Planning in Green Building Projects: LEED as a Use Case. *Journal of Management in Engineering*, 31(1, SI), 1–18. [https://doi.org/10.1061/\(ASCE\)ME.1943-5479.0000314](https://doi.org/10.1061/(ASCE)ME.1943-5479.0000314)
- Xiong, X.; Adan, A.; Akinci, B.; Huber, D. 2013. Automatic creation of semantically rich 3D building models from laser scanner data. *Automation in Construction*, 31, 325–337. <https://doi.org/10.1016/j.autcon.2012.10.006>
- Xu, H.; Feng, J.; & Li, S.; 2014. Users-orientated evaluation of building information model in the Chinese construction industry. *Automation in Construction*, 39, 32–46. <https://doi.org/10.1016/j.autcon.2013.12.004>
- Yalcinkaya, M. & Singh, V. 2015. Patterns and trends in Building Information Modeling (BIM) research: A Latent Semantic Analysis. *Automation in Construction*, 59, 68–80. <https://doi.org/10.1016/j.autcon.2015.07.012>
- Zhang, J.; Schmidt, K.; Li, H. 2016. BIM and Sustainability Education: Incorporating Instructional Needs into Curriculum Planning in CEM Programs Accredited by ACCE. *Sustainability*, 8(6). <https://doi.org/10.3390/su8060525>
- Zhao, X. 2017. A Scientometric review of global BIM research: Analysis and visualization. *Automation in Construction*, 80(April), 37–47. <https://doi.org/10.1016/j.autcon.2017.04.002>

**Timothy O. OLAWUMI.** He is a full-time PhD research student under the supervision of Dr. Daniel Chan at the Department of Building and Real Estate, Faculty of Construction and Environment, The Hong Kong Polytechnic University, Kowloon, Hong Kong. His research interest includes Building Information Modelling (BIM), Sustainability Studies, Construction Technology and Project management.

**Dr. Daniel W.M. CHAN.** He is an Associate Professor at the Department of Building and Real Estate and the Associate Head (Teaching), Faculty of Construction and Environment, The Hong Kong Polytechnic University, Kowloon, Hong Kong. His research interests include Construction Time Performance (CTP), Construction Procurement Systems, Relational and Collaborative Contracting, Project Partnering and Strategic Alliancing, Guaranteed Maximum Price (GMP) and Target Cost Contracting (TCC) Schemes, New Engineering Contract (NEC), Public Private Partnership (PPP), Construction Safety Management. Dr. Daniel Chan is also a Member of the Association for Project Management (UK) (MAPM), Member of the Hong Kong Institute of Construction Managers (MHKICM), Member of the American Society of Civil Engineers (MASCE). He is also a Member of the Hong Kong Institute of Project Management (MHKIPM), Member of the Australian Institute of Project Management (MAIPM), Member of the Chartered Association of Building Engineers (MCABE), and Member of the Australian Institute of Building (MAIB).

**Dr. Johnny K.W. WONG.** He is an Associate Professor at the School of Built Environment, Faculty of Design, Architecture and Building, University of Technology Sydney, Sydney, Australia. His research interests include Green and intelligent building, Green BIM (Building Information Modelling), Age-friendly built environments, Culture in the construction industry. Dr. Johnny Wong is a qualified member (MRICS) of the Royal Institution of Chartered Surveyors (UK).