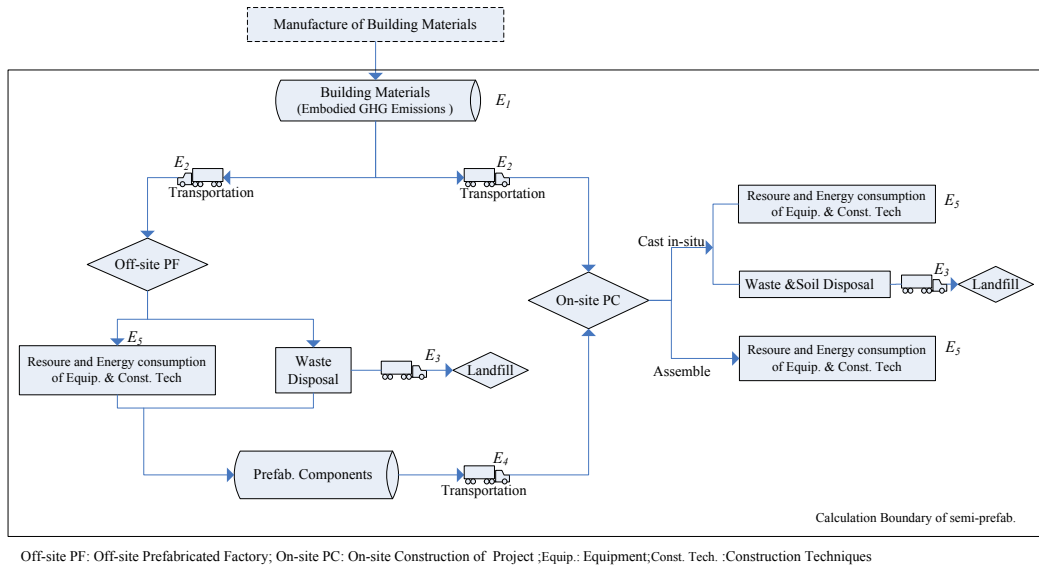


Figure List:



Off-site PF: Off-site Prefabricated Factory; On-site PC: On-site Construction of Project ;Equip.: Equipment,Const. Tech. :Construction Techniques

Fig. 1 Calculation boundary of GHG emissions in construction phase of Semi-prefabricated construction method



Fig. 2 The pictures and general layout of Project A and Project B

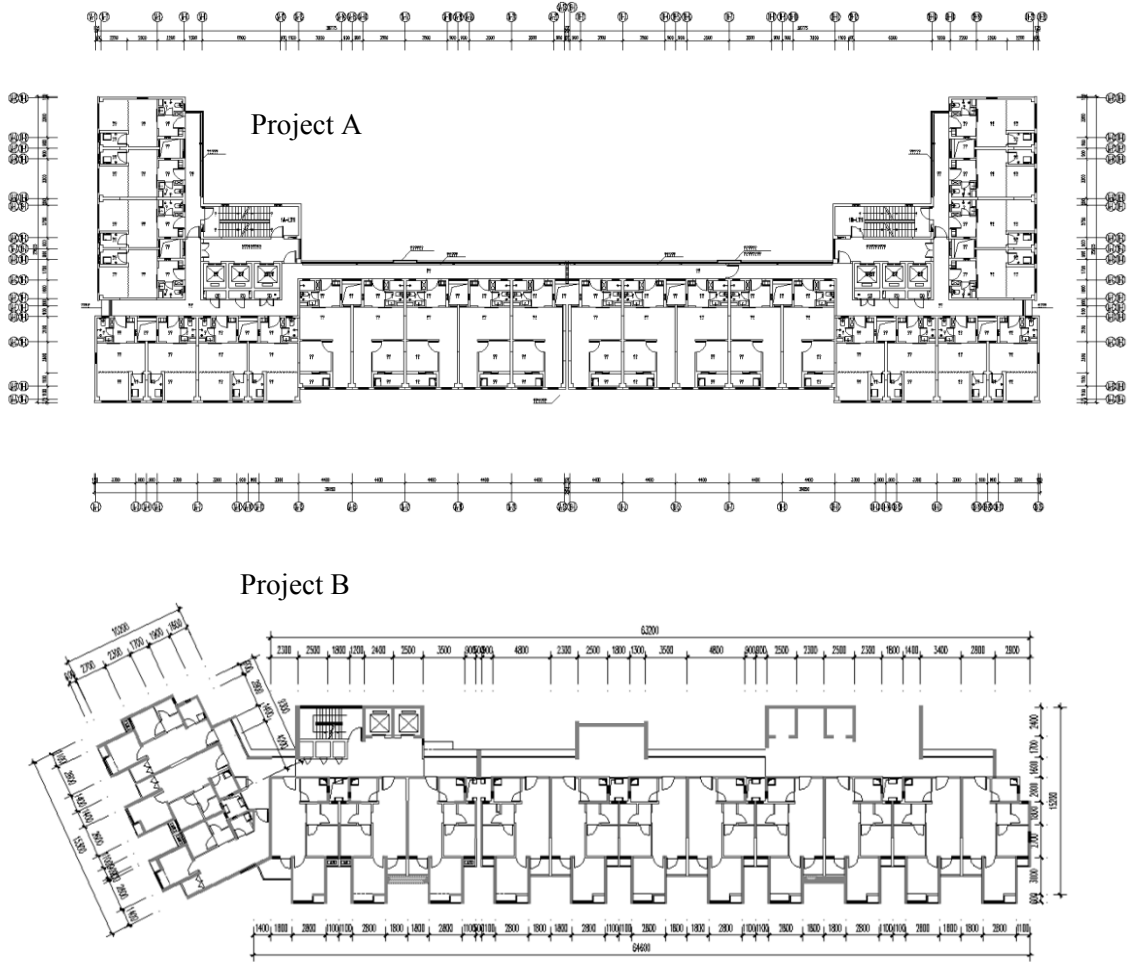
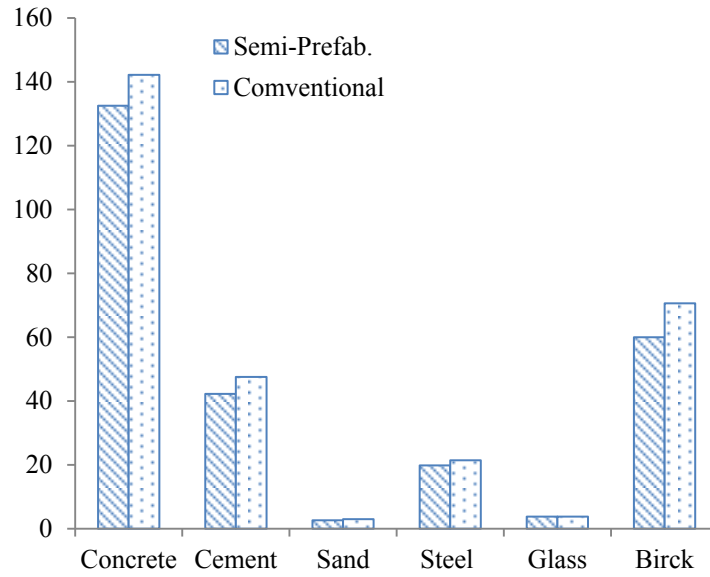


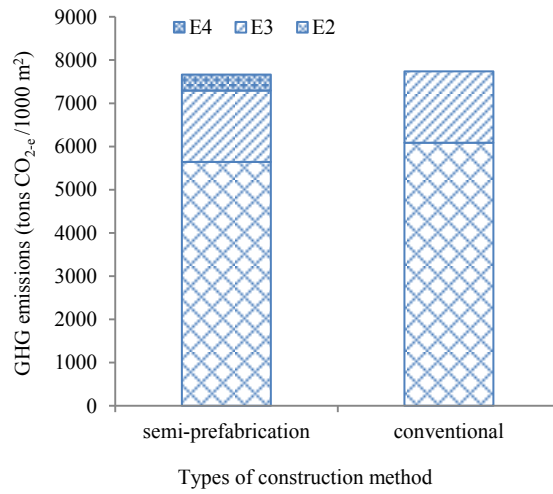
Fig.3 Standard floor plan for the apartments of the two projects



Fig. 4 The three types of prefabricated components in Project A



**Fig. 5 GHG emissions of six materials in semi-prefabrication and conventional per 1000 m<sup>2</sup>**



**Fig. 6 GHG emissions of three types of transportation**