



ARTICLE

Mandarin–English speaking bilingual and Mandarin speaking monolingual children’s comprehension of relative clauses

Elaine Yee Ling Tsoi¹, Wenchun Yang², Angel Chan^{3*}  and Evan Kidd^{4**} 

¹Australian National University, ²Hong Kong Polytechnic University, ³Hong Kong Polytechnic University and Peking University Research Centre on Chinese Linguistics, Research Centre for Language, Cognition, and Neuroscience and ⁴Australian National University, ARC Centre of Excellence for the Dynamics of Language, and the Max Planck Institute for Psycholinguistics

*Corresponding authors. Emails: angel.ws.chan@polyu.edu.hk; evan.kidd@mpi.nl

(Received 04 April 2018; revised 09 January 2019; accepted 16 January 2019)

Abstract

The current study investigated the comprehension of subject and object relative clauses (RCs) in bilingual Mandarin–English children ($N = 55$, $M_{\text{age}} = 7$ years, 5 months [7;5], $SD = 1;8$) and language-matched monolingual Mandarin-speaking children ($N = 59$, $M_{\text{age}} = 5;4$, $SD = 0;7$). The children completed a picture-referent selection task that tested their comprehension of subject and object RCs, and standardized assessments of vocabulary knowledge. Results showed a very similar pattern of responding in both groups. In comparison to past studies of Cantonese, the bilingual and monolingual children both showed a significant subject-over-object RC advantage. An error analysis suggested that the children’s difficulty with object RCs reflected the tendency to interpret the sentential subject as the head noun. A subsequent corpus analysis suggested that children’s difficulty with object RCs may be in part due to distributional information favoring subject RC analyses. Individual differences analyses suggested crosslinguistic transfer from English to Mandarin in the bilingual children at the individual but not the group level, with the results indicating that comparative English dominance makes children vulnerable to error.

Keywords: bilinguals; crosslinguistic transfer; Mandarin; syntax; relative clauses

The acquisition and processing of relative clauses (RCs) is a perennial topic in psycholinguistic studies of syntax (e.g., Gibson, 1998; Kidd, 2011; MacDonald, 2013). Consider sentences (1) and (2).

- (1) The chicken [that __ kissed the mouse]
- (2) The mouse [that the chicken kissed __]

Sentence (1) is a subject RC, because the head noun *the chicken* occupies the subject role in the RC (in brackets). Sentence (2) is an object RC because the head

© Cambridge University Press 2019. This is an Open Access article, distributed under the terms of the Creative Commons Attribution licence (<http://creativecommons.org/licenses/by/4.0/>), which permits unrestricted re-use, distribution, and reproduction in any medium, provided the original work is properly cited.

noun *the mouse* occupies the RC object role. These two RC types have been studied most frequently in the literature; as they both describe the same transitive event, differences in their processing are assumed to reflect fundamental properties of syntactic processing (though see Gennari, & MacDonald, 2008). As such, their study has been argued to bear upon fundamental theoretical issues concerning the acquisition and processing of grammar. Notably, the broad theoretical debate concerns the relative ease with which the two structures are acquired and processed, and the types of explanations that provide the best fit to the data.

The results from a range of acquisition and adult processing studies have been mostly uniform: with some qualifications (e.g., Diessel & Tomasello, 2000; Kidd, Brandt, Lieven, & Tomasello, 2007; Mak, Vonk, & Schriefers, 2002; Wells, Christiansen, Race, Acheson, & MacDonald, 2009), subject RCs are earlier acquired and are easier to process than object RCs. This effect is fairly consistent across a range of populations (e.g., mono- and multilingual, neurotypical and atypical), age groups (children, young and older adults), and methodologies (e.g., naturalistic speech, comprehension, and production). However, what is not entirely clear is whether it holds crosslinguistically. While the subject advantage is robust in commonly studied languages, such as English (Kidd & Bavin, 2002), German (Brandt, Kidd, Lieven, & Tomasello, 2009), and Italian (Adani, 2011), in addition to Hebrew (Arnon, 2010; Friedman, Belletti, & Rizzi, 2009), several counterexamples of an object advantage or null effects have been reported in morphologically rich languages such as Basque (Carreiras, Duñabeitia, Vergara, de la Cruz-Pavía, & Laka, 2010; Gutierrez-Mangado, 2011), Finnish (Kirjavainen, Kidd, & Lieven, 2017; Kirjavainen & Lieven, 2011), Japanese (Ozeki & Shirai, 2007a; Suzuki, 2011), and Quechua (Courtney, 2006, 2011). In this study we focus on one language that has produced notably inconsistent results across studies but which is a particularly important language for deciding between two classes of theories: Mandarin. We ask two research questions. First, is there a subject–object asymmetry in Mandarin-speaking children’s comprehension of RCs, and how can the data be best explained by psycholinguistic theory? Second, does RC acquisition differ across monolingual and Mandarin–English bilinguals, whose two languages provide optimal conditions for syntactic transfer?

RC Acquisition in Mandarin

Mandarin RCs have the typologically rare combination of subject–verb–object (SVO) word order and prenominal RCs (Dryer, 2005). This makes Mandarin (and other languages such as Cantonese; Chan, Yang, Chang, & Kidd, 2018) an interesting point of comparison to traditionally-studied European languages because, unlike in languages like English, in Chinese languages structural and linear constraints on interpretation are not confounded (Chan, Matthews, & Yip, 2011). Structurally, there appears to be, all things being equal, a general preference across most languages studied to relativize on subjects, which is captured in many theoretical accounts (e.g., Bornkessel-Scheslewsky & Scheslewsky, 2009; Friedmann *et al.*, 2009; Keenan & Comrie, 1977; Vasishth, Chen, Li, & Guo, 2013), and which can in broad theoretical terms be explained as arising from subject prominence (O’Grady, 2011). In European languages this is compounded by word order cues,

where the preference to put subjects early in the sentence results in cue convergence (e.g., English subject RCs follow SVO word order, whereas object RCs have the rare OSV word order). However, in Mandarin, word order constraints pull in the opposite direction. Consider sentences (3) and (4), Mandarin subject and object RCs, respectively (numbers denote tones).

- (3) [__qin1 gong1ji1] de lao3shu3
 kiss chicken RL mouse
 “The mouse that kisses the
 chicken”
- (4) [lao3shu3 qin1 __] de gong1ji1
 mouse kiss RL chicken
 “The chicken that the mouse kisses”

The underscore gap in (3) and (4) denotes the role that the head noun occupies within the RC. Mandarin object RCs as in (4) follow the canonical SVO word order, and thus the linear distance between the head and the gap is shorter for object than for subject RCs. Therefore, theories that predict complexity effects based on linear distance or a canonical word order preference predict an object advantage for Mandarin (Diessel, 2007; Gibson, 1998; Hsiao & Gibson, 2003). In contrast, theories that predict complexity effects based on hierarchical structure (Friedmann et al., 2009; Lin & Bever, 2006) or parsing preferences induced from distributional analyses of the input predict a subject advantage (Vasishth et al., 2013; Yun, Chen, Hunter, Whitman, & Hale, 2015).

To date, the acquisition data are mixed. In a study of longitudinal naturalistic speech, Chen and Shirai (2015) reported that object RCs are more frequent in the input and are acquired earlier than subject RCs. In the earliest stages of development (average mean length of utterance = 2.1), the children almost exclusively produced object RCs as isolated NPs (e.g., sentence [5]), and continued to produce numerically more object RCs as their ability to relativize different elements in the matrix clause expanded. The authors interpreted the developmental trajectory to be consistent with the usage-based approach (Diessel, 2007), arguing that the word order overlap between object RCs modifying an isolated NP (sentence [5]) and simple SVO clauses (sentence [6]) enable children to bootstrap into the grammar of RCs (see Yip & Matthews, 2007).

- (5) [ba4ba mai3] de ban3
 Daddy buy RL board
 “The board that Daddy bought”
- (6) ba4ba mai3 ban3
 “Daddy bought board”

These data are important because they show that one potentially important determinant of acquisition, *frequency* (Ambridge, Kidd, Rowland, & Theakston, 2015), strongly supports the early acquisition of object RCs. However, one possibility that Chen and Shirai’s (2015) analyses did not account for is the specificity of the frequency effect. Across languages it is not uncommon for object RCs to be frequent in the input but highly restricted in their distributional properties. Specifically, object RCs overwhelmingly have inanimate head nouns and frequently have discourse-old subjects (e.g., *the board you bought*; see more crosslinguistic examples

from Fox & Thompson, 1990, featuring English; Mak *et al.*, 2002, featuring Dutch and German; Ozeki & Shirai, 2007b, featuring Japanese; Zubin, 1979, featuring German; for examples from child language, see Diessel, 2009, featuring English; Kidd *et al.*, 2007, featuring English and German; Kirjavainen *et al.*, 2017, featuring Finnish). The same is true for Mandarin (Lin, 2011). It is possible that the restricted nature of early object RCs does not translate to an overall object preference when cues such as animacy are neutralized in experimental conditions.

The experimental evidence is inconclusive. Studies using production methodologies have reported a subject advantage (Cheng, 1995; Hsu, Hermon, & Zukowski, 2009; Hu, Gavarró, & Guasti, 2016a), an object advantage (Ning & Liu, 2009), or no difference (Su, 2004; for an overview of the early research, see Chan *et al.*, 2011). This paper concentrates on comprehension, where the past results are similarly inconsistent. Some of the inconsistency is potentially due to methodological problems concerning how best to test knowledge of RCs. For instance, many early studies tested children's knowledge of RCs without presenting the structures in a supporting discourse context (e.g., Chang, 1984; Lee, 1992), which is problematic because RCs have clear discourse functions (for discussion see Corrêa, 1995; Hamburger & Crain, 1982). More recent studies have corrected this problem to varying degrees. Hu, Gavarró, Vernice, and Guasti (2016b) tested 3- to 8-year-old Mandarin-speaking children's knowledge of subject and object RCs using picture-referent selection. Children saw pictures of reversible actions (e.g., cat hitting dog, dog hitting cat) and were asked to identify the referent that corresponded to the head noun (e.g., for the object RC *which one is the dog that the cat hits*, the correct referent is the cat who is hitting the dog). Thus the pictures served as a referential context. The results revealed a clear subject preference, in which children showed comparative difficulty with object RCs up until the age of 7 years. Using a slightly different methodology with a sample of 3- to 6-year-olds, He, Xu, and Ji (2017) reported the opposite effect. In their study, children saw two pictures of complex scenes involving three animals (e.g., a dog chasing a rabbit that bumps into a goat, a rabbit bumping into a goat while chasing a rabbit), and were required to choose the picture that matched test sentences manipulated for embeddedness and extraction (e.g., *the rabbit that the dog chased encountered the goat*).

The differences between the results once again are likely to reflect methodological choices. One general problem with both studies is that it is unclear how sensitive children of different ages are to nonlinguistic referential contexts (i.e., pictures), and whether they can use these to restrict reference (Bavin, Kidd, Prendergast, & Baker, 2016; Choi & Trueswell, 2010; Kidd, Stewart, & Serratrice, 2011; Snedeker & Trueswell, 2004; Trueswell, Sekerina, Hill, & Logrip, 1999). As pointed out by Corrêa (1995), the functionally appropriate use of a restrictive RC presupposes the introduction of the head referent in prior discourse, and so the prior work on Mandarin has tested children's knowledge in the absence of felicitous contexts (but see Chan *et al.*, 2017). In addition, while Hu *et al.* required children to choose the correct token of the head referent, He *et al.* (2017) only required children to choose the correct picture (see also Jia & Paradis, 2018, who reported no preference). This is problematic, as it makes it possible for children to choose the correct picture even though they may have interpreted the picture incorrectly (Adani, 2011; Arnon, 2005). Hu *et al.*'s data suggest this is likely: they found that the most

common error children made when interpreting object RCs was to point to the RC subject in the correct picture (i.e., choosing the mouse in *laoshu qing de gongji*, “the chicken that the mouses kisses”), suggesting that the children may be interpreting the SVO sequence as a simple main clause (see also Hu, 2014).

In sum, Mandarin is an important language in debates regarding the acquisition and processing of RCs because its typological uniqueness allows the opposing prediction of two classes of theories to be tested: those that predict a subject advantage (e.g., Friedmann et al., 2009; Keenan & Comrie, 1977; Lin & Bever, 2006; Vasissth et al., 2013) versus those that predict an object advantage (e.g., Diessel, 2007; Gibson, 1998). In acquisition, the naturalistic data suggest a clear early emergence of object RCs, although these are more than likely restricted in function. In contrast, the experimental literature has produced a range of contradictory results. In the current study we revisit Mandarin-speaking children’s comprehension of subject and object RCs, with the aim of resolving the apparent inconsistencies in the past empirical literature. We tested two populations of children: (a) monolingual children acquiring Mandarin in China, and (b) Mandarin–English bilingual children acquiring their two languages in Australia. Mandarin–English bilingual children are an interesting focus of study for an additional reason: as both languages have canonical SVO word order but different head-directionality, the combination of the two languages provides the potential for crosslinguistic transfer of syntactic processing strategies, to which we now turn.

Crosslinguistic Transfer in English–Chinese Bilinguals

Crosslinguistic transfer of syntactic processing strategies occurs in both children and adults (e.g., children: Döpke, 1998; Foroodi-Nejad & Paradis, 2009; Kidd, Chan, & Chiu, 2015; Yip & Matthews, 2000; adults: Hartsuiker, Pickering, & Veltkamp, 2004; Kidd, Tennant, & Nitschke, 2015; Meijer & Fox Tree, 2003), and is particularly revealing about (a) the sources of information children use to acquire structure, and (b) the representational architecture of the linguistic system as a whole. Müller (1998) hypothesized that crosslinguistic transfer occurs in cases where learners are confronted with ambiguous input. Specifically, if structure X in Language A allows (or potentially allows) multiple structural analyses, but in Language B the structure overlaps with and matches only one of these possible analyses, then transfer from Language B to Language A is predicted. Mandarin object RCs present one such case. Consider again sentence (4), rewritten as (7).

- (7) [lao3shu3 qin1 ___] de gong1ji1
 mouse kiss RL chicken
 “The chicken that the mouses kisses”

As pointed out by Diessel (2007) and Chen and Shirai (2015), in Mandarin there is structural overlap between object RCs and simple SVO main clauses, which differ only by the presence of the unstressed relative marker *de*. In English, the only possible interpretation is a simple transitive clause. Therefore, following Müller (1998), Mandarin object RCs are a candidate case for negative crosslinguistic transfer in Mandarin–English bilinguals.

Several recent studies have studied crosslinguistic transfer in Chinese–English bilinguals. Jia and Paradis (2018) tested 28 Mandarin–English bilingual children ($M_{\text{age}} = 8$ years; 0 months [8;0], range 6;0–9;8) and 15 monolingual Mandarin-speaking children ($M_{\text{age}} = 7;1$, range: 6;8– 7;4) on tests of RC comprehension and elicited production. The monolingual children outperformed the bilingual children on the production task, producing significantly more subject and object RC targets (no comparisons across the two structure types were reported). Comprehension was measured using picture selection of reversible actions, and in contrast to the production data, the two groups did not differ in their comprehension of subject and object RCs and did not differ from each other. However, as stated above, picture selection may mask error patterns specific to Chinese, and so these data should be considered preliminary. The authors reported data consistent with crosslinguistic transfer. In the production task the bilingual children produced a small number of ungrammatical head-initial RCs (8%), which likely reflects the use of an English relativization strategy. The comprehension task also tested ungrammatical head-initial RCs, which followed English word order. Both groups performed well on subject RCs (approx. 90%), suggesting they used their knowledge of SVO word order to interpret the sentences. In contrast, both groups experienced greater difficulty with the head-initial object RCs (bilinguals: 65%, monolinguals: 56%), with the bilingual group responding significantly faster than the monolingual children, potentially because head-initial RCs that follow OSV word order is a more available parsing strategy to them compared to the monolingual children.

Two other studies have investigated crosslinguistic transfer in multilingual Cantonese-speaking children. Although Mandarin and Cantonese are closely related but distinct languages, the Cantonese data are highly relevant. Kidd *et al.* (2015a) investigated RC comprehension in 5- to 9-year-old monolingual Cantonese-speaking children and vocabulary-matched 5- to 12-year-old Cantonese–English bilingual children growing up in Australia. Like Mandarin, Cantonese has SVO canonical word order and head-final RCs. The authors tested two prominent Cantonese relativization strategies. Cantonese has one RC structure that is formally similar to Mandarin *de* RCs, which we call *ge3* RCs, as in (8).

- (8) [lou5syu2 sek3 ___] ge3 gung1gai1
 mouse kiss RL chicken
 “The chicken that the mouse kisses”

Cantonese also has a more commonly used relativisation strategy, classifier (CL) RCs, which provide an interesting comparison to *ge3* RCs because CL RCs have the exact same surface structure as simple SVO clauses. Consider (9) and (10):

- (9) [lou5syu2 sek3 ___] go2 zek3 gung1gai1
 mouse kiss DEM CL chicken
 “The chicken that the mouse kisses”
 (10) [Lou5syu5 sek3 go2 zek3 gung1gai1]
 mouse kiss DEM CL chicken

Based on Müller’s (1998) crosslinguistic transfer hypothesis, Kidd *et al.* (2015a) predicted that English–Cantonese children would have difficulty processing

Cantonese RCs because of the word order overlap between simple SVO clauses in both English and Cantonese, on the one hand, and Cantonese object RCs, on the other. The children were tested on a referent selection task in which the children were required to identify the correct token of the head referent from two pictures depicting reversible actions (à la Hu et al., 2016b). Their hypothesis was supported: the bilingual children's poor performance on object RCs was the only result that distinguished the two groups. Of note, the bilingual children had particular difficulty with CL relatives, which are completely isomorphic with simple SVO clauses. For both *ge3* and CL object RCs, the bilingual children tended to make what Kidd et al. called "head" errors, where they incorrectly selected the RC subject of the correct picture (e.g., the mouse in sentence [9]). The authors argued that this result could reflect the tendency for the bilingual children to interpret object RCs as simple SVO clauses, or alternatively as a noun modifying construction where the agent serves as a semantic head. There were suggestions in the data that bilingual children's performance was moderated by the relative dominance in their two languages, although low participant numbers ($N = 20$) meant that the dominance analyses were speculative.

Chan, Chen, Matthews, and Yip (2017) reported data from a study comparing 4-year-old monolingual Cantonese- and Mandarin-speaking children to age-matched Cantonese-English-Mandarin trilingual 4-year-olds, using the same picture referent selection task as Kidd et al. (2015a). The authors found that, in comparison to the monolingual Cantonese children, who showed a numerical object RC advantage, the trilingual children had difficulty processing object RCs, and consistent with Kidd et al. made a significant number of head noun assignment errors. That is, the trilinguals had more difficulty with head noun assignment relative to their monolingual peers. The authors hypothesized that this was due to negative transfer from English to Cantonese, because the Cantonese object CL RCs tested overlap not only with the SVO transitive constructions in Cantonese and English but also with English subject RCs (also SVO), with English RCs clearly allowing only a head-initial analysis. Overlap with English head-initial subject RCs could have motivated a head-initial analysis in multilinguals with intensive exposure to English, especially because the Cantonese (head-final) object CL RCs tested lack an overt relative marker, making head noun assignment especially vulnerable to negative transfer.

On the other hand, the Chan et al. (2017) study also reported that, despite the close typological proximity between Mandarin and Cantonese, the monolingual Mandarin children showed a subject RC advantage, as did the trilingual children when tested in Mandarin. Both groups made a significant number of head errors. These Mandarin results support theories that predict a subject RC advantage, although the universality of the preference is questioned by the Cantonese monolingual data (see Chan et al., 2018). Chan et al. (2017) argued for a complex pattern of crosslinguistic transfer in their trilingual sample. They attributed the trilinguals' subject preference in Cantonese to be due to negative transfer from English, as in Kidd et al. (2015a). The children's weakest language was Mandarin, having only around 200 min of exposure to the language each week. Despite this fact, the children performed as well as the Mandarin monolingual children, and

their performance in Mandarin was equivalent to their performance in Cantonese. Chan *et al.* attributed this result to positive transfer from Cantonese to Mandarin, suggesting that the close correspondence between RC structures in the two languages boosted the trilinguals' performance in Mandarin.

The Current Study

Chinese is an important language in debates regarding RC acquisition and processing, with several theories making opposing predictions. Accordingly, the current study addresses several research questions. First, we investigated whether there is a subject or an object advantage in children acquiring Mandarin as a first language, and how this bears upon psycholinguistic theory. Past research in this domain has suffered from inconsistencies that may be in part due to a range of methodological limitations, which in our study were rectified. In theoretical terms, one class of theories predicts a subject advantage (e.g., Friedmann *et al.*, 2009; Lin & Bever, 2006; Vasissth *et al.*, 2013; Yun *et al.*, 2015), whereas another class predicts an object advantage (e.g., Diessel, 2007; Gibson, 2000), with each individual theory often having very different conceptual and epistemological commitments leading to those predictions. Here we take a theory-testing approach, first aiming to establish the nature of the empirical effect, thereby establishing support for one class of theories or the other, and then we consider likely theoretical interpretations of the effect. Second, following Kidd *et al.* (2015a) and Chan *et al.* (2017), we investigated whether Mandarin–English bilinguals show crosslinguistic transfer from English to Mandarin, such that they have particular difficulty with Mandarin object RCs and interpret them with the error pattern consistent with an English-based head-initial SVO analysis. Third and finally, we also modeled individual differences in the children's comprehension, testing how the children's language experience, as measured by their Mandarin vocabulary (monolinguals and bilinguals) and bilingual language dominance, predicted comprehension accuracy.

Method

Participants

One hundred and fourteen ($N = 114$) children participated. The bilingual group consisted of 55 ($N = 55$, 19 males, 36 females) children aged between 4;5 and 10;10 years, who were recruited from language schools and community groups in Canberra, Australia. Due to their large age range, the bilingual sample was divided into two age groups via a median split. The younger group (4;5–7;2, $M = 6;1$, $SD = 0;10$) comprised 8 boys and 20 girls. The older group (7;3–10;10, $M = 8;9$, $SD = 1;1$) comprised 11 boys and 16 girls. Fifty-nine ($N = 59$, 37 males, 22 females) language-matched monolingual Mandarin-speaking children, recruited from a kindergarten in Shenzhen, China, served as a comparison group. These

Table 1. Children's English and Mandarin PPVT-4 scores

Age	Monolingual		Bilingual			
	Mandarin PPVT-4		Mandarin PPVT-4		English PPVT-4	
	<i>M</i> (<i>SD</i>)	Range	<i>M</i> (<i>SD</i>)	Range	<i>M</i> (<i>SD</i>)	Range
Younger	118.24 (21.41)	73–158	113.11 (29.71)	71–184	102.75 (21.73)	71–159
Older	146.40 (25.62)	92–178	141.96 (35.33)	85–198	142.59 (26.46)	92–191
Total	132.56 (27.42)	73–178	127.27 (35.42)	71–198	122.31 (31.26)	71–191

PPVT-4, Peabody Picture Vocabulary Test (4th edition).

children were born in Mainland China, spoke Mandarin at home, and their primary medium of instruction at school was Mandarin. To facilitate comparisons with the two bilingual age groups, the monolingual sample was also divided into two age groups. The younger group (4;3–4;9, $M = 4;6$, $SD = 0;2$) comprised 19 boys and 10 girls. The older group (5;4–5;10, $M = 5;6$, $SD = 0;2$) comprised 18 boys and 12 girls. All children were typically developing, spoke only Mandarin at home as verified through school records, and had not been diagnosed with developmental delay or cognitive impairments.

The English and Mandarin (for monolingual and bilingual children) versions of the Peabody Picture Vocabulary Inventory—4th edition (PPVT-4, Dunn & Dunn, 2007) were used to assess the children's English and Mandarin vocabulary knowledge (see Materials section for details). Table 1 lists the children's English and Mandarin PPVT-4 scores.

The groups did not differ in their Mandarin vocabulary: young, $t(55) = 0.75$, $p = .46$, $d = 0.2$; old, $t(55) = 0.63$, $p = .53$, $d = 0.17$.¹ Therefore, both the young and the old age groups were language matched across the monolingual and bilingual groups, although they differed in age. In addition, the two bilingual groups did not differ overall in their Mandarin and English vocabulary: young, $t(27) = 1.55$, $p = .13$, $d = 0.3$; old, $t(26) = 0.07$, $p = .94$, $d = 0.01$.

The bilingual children's parents/guardians completed a demographics questionnaire used by Kidd et al. (2015a). The questionnaire measured: (a) if the child was born or had lived in Chinese-speaking regions (e.g., China, Singapore, or Hong Kong), (b) the average number of hours per week the child spends in English- and Mandarin- speaking environments, (c) the child's frequency of speaking English and Mandarin at home (5-point Likert scale, 1 = *never* and 5 = *all the time*), and (d) the child's parent-rated abilities to understand spoken English and Mandarin (7-point Likert scale, 1 = *poor* and 7 = *excellent*). Table 2 shows the number of months that the children lived in Chinese-speaking regions and their percentage of hours per week spent in each language environment.

Approximately half of the younger children (15/28, 46.4%) and just over a third of the older children (10/27, 37%) had spent time living in a Chinese-speaking country or region. The length of time varied considerably (young: 1–48 months; old:

Table 2. Number of months that the children lived in Chinese-speaking regions and their percentage of hours per week spent in each language environment

Age group	Months lived in Chinese-speaking regions ^a		% of hours per week spent in each language environment			
	<i>M</i>	<i>SD</i>	English		Mandarin	
			<i>M</i>	<i>SD</i>	<i>M</i>	<i>SD</i>
Younger	13.62	15.59	49.28	.15	50.72	.15
Older	29.20	27.39	65.91	.20	34.09	.20
Total	20.39	22.40	57.44	.20	42.56	.20

^a*n* = 13 for younger children, and *n* = 10 for older children.

Table 3. Children's frequency of speaking each language at home, and their parent-rated abilities to understand each spoken language

Age group	Frequency of speaking each language at home		Parent-rated abilities to understand each spoken language	
	English	Mandarin	English	Mandarin
	<i>Mdn</i> ^a	<i>Mdn</i>	<i>Mdn</i>	<i>Mdn</i>
Younger	3	4	6	6
Older	3	3	6	5
Total	3	3	6	6

^a*Mdn*, median.

1–72 months). Although the older group had on average spent more time in Chinese-speaking environments, the two groups did not statistically differ on this variable, $t(13.42) = 1.61, p = .131, d = 0.7$. The younger bilingual children spent an equal amount of time in Mandarin- and English-speaking environments, $t(27) = 0.25, p = .8, d = 0.05$, whereas the older bilingual children spent significantly more time in English-speaking environments, $t(26) = 4.08, p < .001, d = 0.78$.

Table 3 shows the parent-rated frequency of speaking each language at home (5-point Likert scale, 1 = *never* and 5 = *all the time*), as well as the children's parent-rated abilities to understand each spoken language (7-point Likert scale, 1 = *poor* and 7 = *excellent*).

Parents rated Mandarin as spoken more often than English at home ($Z = 2.44, p = .015$). However, this result was carried by the younger group (young: $Z = 3.16, p = .002$; old: $Z = 0.46, p = .65$). In addition, the parents rated their children's ability in English to be better than in Mandarin ($Z = 2.5, p = .012$), with this result carried by the older group (young: $Z = 0.61, p = .54$; old: $Z = 2.58, p = .01$).

Materials and procedure

The children's vocabulary was assessed using the PPVT-4 (Dunn & Dunn, 2007), and their RC comprehension was tested using picture selection (Kidd *et al.*, 2015a).

Two female researchers tested the children. The bilingual children were tested by a trilingual speaker of Mandarin, Cantonese, and English (Hong Kong native); the monolingual children by a native speaker of Mandarin. The bilingual children were tested in a university child language laboratory, or in a quiet area in the child's language school, home, or church. The monolingual children were tested in a quiet room in their school. The children first completed the PPVT-4, and then the RC comprehension test. The order of testing language for the bilingual children was counterbalanced: half of the children first completed the PPVT-4 and the RC test in English and then in Mandarin, and half vice versa. The experimenter greeted the bilingual children in the language in which they were first tested. After they were tested in their first language, the experimenters switched to the other language and instructed the child that they would speak Mandarin or English from now on. Each task is described in turn.

PPVT-4

The PPVT-4 (Dunn & Dunn, 2007) was used to assess the children's Mandarin and English vocabulary knowledge, serving as an objective proxy measure for language experience. The test comprises two parallel forms: PPVT-4-A and PPVT-4-B. There is no published Mandarin version of the test; therefore we translated both A and B forms into Mandarin (for details of the translation see Tsoi, 2016). Each form of the PPVT-4 comprises 228 items, grouped into 19 sets. The sets are ordered by increasing difficulty (i.e., the easiest words are in Set 1). During the test, children were presented with an array of four pictures. The experimenter then read out a word that corresponded to one of the pictures, and the child was asked to point to the picture that represents the target word. Testing was discontinued when children answer eight or more items incorrectly in a set. Each child's score was calculated by subtracting the total number of errors from the total number of answers. Hence, the total maximum score was 228. As the Mandarin version is not standardized, raw scores were used in our analyses.

The PPVT-4 was administered according to the standard procedure for the test. To measure the monolingual children's Mandarin vocabulary, either the A or B version of the PPVT-4 was used. Opposite versions of the PPVT were used to measure the bilingual children's Mandarin and English vocabulary. For example, the experimenter used the Mandarin PPVT-A and the English PPVT-B form to test a child, and vice versa.

Test of RC comprehension

RC comprehension was tested using picture referent selection. Four parallel forms of the RC test were constructed. Each form had an English and a Mandarin version. Each bilingual child completed one English and one Mandarin version of the test; monolingual children completed only one Mandarin version. Each form contained 34 sentences, which included 2 practice trials and 32 test sentences (16 test sentences, including 8 subject and 8 object RCs, and 16 fillers). RC test sentences contained one of four verbs: *feed*, *hug*, *kiss*, and *push*. The verbs were presented an equal number of times, with each verb appearing in four RCs (twice in subject RCs

Table 4. Examples of test sentences for each condition

Within-subject condition		RCs				
English						
Eng_Sub	Where is the horse that is hugging the pig?					
Eng_Obj	Where is the cat that the duck is feeding?					
Mandarin						
Man_Sub	喂	小狗	的	猴子	在	哪里？
	Feed	dog	RL	monkey	is	where?
Man_Obj	小羊	推	的	小兔	在	哪里？
	Sheep	push	RL	rabbit	is	where?

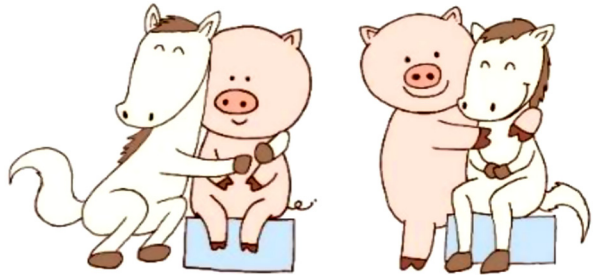


Figure 1. Sample picture for the RC “Where is the horse that is hugging the pig?”

and twice in object RCs). The test sentences were controlled for length in words/characters. English RCs contained 9 words (10 to 13 syllables, $M = 11$). Mandarin RCs contained 9 to 10 monosyllabic characters ($M = 9$ characters). All RCs used only animate head nouns and animate RC-internal NPs. The animacy of the head referent moderates the complexity associated with children’s object RC comprehension (Brandt *et al.*, 2009), which is likely due to the fact that object RCs with inanimate heads are more frequent and are therefore easier to process (Kidd *et al.*, 2007). Our use of animate head nouns therefore removes one cue that Mandarin-speaking children could use to process RCs. We take up the issue of animacy in the Discussion.

Table 4 listed examples of test items. Filler sentences were simpler structures (intransitive and transitive sentences). All sentences (*i.e.*, practice, test, and filler) were prerecorded by native speakers of either English or Mandarin (for full list of test sentences see Appendix A).

Each test sentence was associated with two pictures, each consisting of the same two animals performing reversible actions (*e.g.*, horse hugging pig, pig hugging horse; see Figure 1). There were 16 animals in total (horse, pig, rabbit, sheep, cat, duck, monkey, dog, mouse, chicken, tiger, giraffe, lion, elephant, bear, and cow).

The test of RC comprehension was presented on a laptop computer using Microsoft Powerpoint. The test began with two practice trials, the function of which

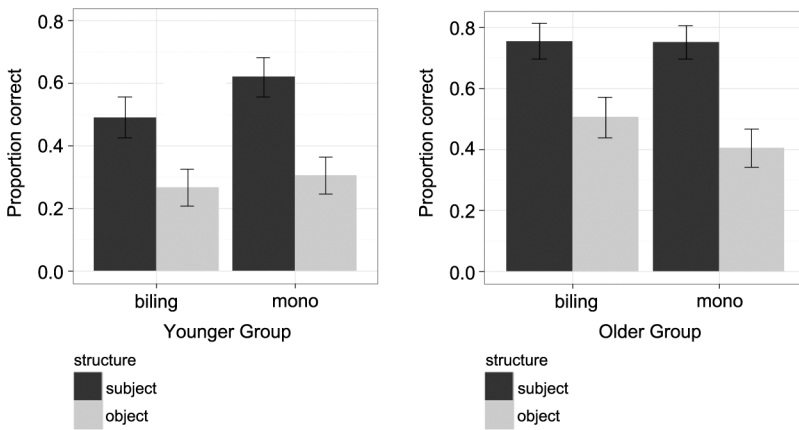


Figure 2. Bilinguals' and monolinguals' mean proportion of correct responses (and standard errors) for Mandarin subject and object RCs by age group.

was to introduce the child to the nature of the task. As each picture was presented, an audio recording of a sentence that described the picture automatically played. All items followed the following procedure. One picture was shown and described (e.g., “Here, the horse is hugging the pig”). Next, the other picture from the picture pair was shown with its accompanying audio (e.g., “Here, the pig is hugging the horse”). For the test RC structures, these background scenes created a felicitous discourse context within which the test structures could be processed as noun modifying constructions, which better reveal children’s RC knowledge (Corrêa, 1995; Kidd & Bavin, 2002). On the third slide, both pictures were presented side by side, accompanied by the target sentence (e.g., “Where is the horse that is hugging the pig?”). The child’s task was to identify the character denoted by the head noun (i.e., the correct horse). The position of the target character was counterbalanced across items. The order of whether the target character appeared in the first or second background scene was also counterbalanced.

Coding and analyses

The RC test responses were coded as follows: (a) Correct; (b) Head error: if the child pointed to the correct picture but the incorrect character (i.e., pointing to the leftmost pig in panel C of Figure 2); (c) Reversal error: if the child pointed to the incorrect picture but the correct character (i.e., pointing to the rightmost horse in Panel C of Figure 2); (d) Other error: if the child pointed to the incorrect picture and the incorrect character (i.e., pointing to the rightmost pig in Panel C of Figure 2).

Results

Comprehension of Mandarin RCs

The means and standard errors for the monolingual and bilingual children’s comprehension of Mandarin subject and object RCs are shown in Figure 2. Figure 2 shows

Table 5. Fixed effects from final overall model of children's RC comprehension

	β	$SE(\beta)$	z	p
Intercept	-0.21	.22	-0.96	.34
Structure	1.64	.22	7.39	<.001*
Age group	-1.09	.24	-4.59	<.001*

Note: Structure represents subject versus object RCs. Age group represents old versus young. LogLik = -1050.2. Number of observations = 1,824. * $p < .001$.

that younger children were less accurate overall than were older children. Across all groups, children were more accurate in their comprehension of subject in comparison to object RCs.

Our first set of analyses addressed Research Question 1: Is there a subject-object asymmetry in children's comprehension of Mandarin RCs, and does this differ according to language group? The data were analysed using generalized linear mixed-effects models, which were calculated using the *lme4* package (version 1.1-18-1) for linear mixed effects (Bates, Maechler, Bolker, & Walker, 2015) in *R* (version 3.5.1; R Core Team, 2017). Structure (subject RCs vs. object RCs), language group (monolingual vs. bilingual), and age group (young vs. old) were included as fixed effects, and participants and items as random effects. Random slopes for repeated-measures variables were also specified. We built a null model containing the maximally specified combination of random effects and slopes (Barr, Levy, Scheepers, & Tily, 2013), but random slopes for language group and age group for the random effect of items were removed because of lack of model convergence. The null model contained random effects for participants and items, and the by-participants random slope for structure. Fixed effect terms were then added to the model one at a time, and their contribution was tested by comparing the new model to the null using the *anova* function. Nonsignificant terms were dropped. The inclusion of the fixed effects of structure, $\chi^2 = 40.8$, $df = 1$, $p < .001$, and age, $\chi^2 = 19.81$, $df = 1$, $p < .001$, improved model fit, confirming that children were more accurate on subject RCs overall, and that accuracy on both structures improved with age. The details of the final model are shown in Table 5.

Comprehension of English RCs

Figure 3 shows bilingual children's accuracy on the English RCs by age group. The young bilingual children had difficulty with English object RCs relative to subject RCs, whereas there was little difference between the two structures in the older age group. The data were modeled in the same manner as the Mandarin accuracy data. The null model contained random effects for participants and items, and random by-participant slope for the fixed effect of structure. The main effect of structure did not significantly add to the model, $\chi^2 = 2.55$, $df = 1$, $p = .11$, whereas the main effect of age, $\chi^2 = 12.31$, $df = 1$, $p < .001$, and the Structure \times Age interaction did, $\chi^2 = 18.33$, $df = 2$, $p < .001$. The interaction was driven by the fact that the younger group showed the subject-object asymmetry, $\beta = 2.48$, $SE(\beta) = .54$, $z = 4.59$, $p < .001$, whereas the older children did not, $\beta = -0.15$, $SE(\beta) = .88$, $z = -0.17$, $p = .86$.

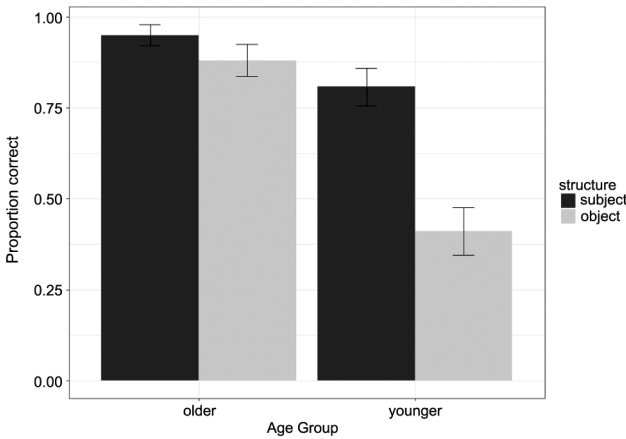


Figure 3. Bilingual children's mean proportion of correct responses (and standard errors) for English subject and object RCs by age group.

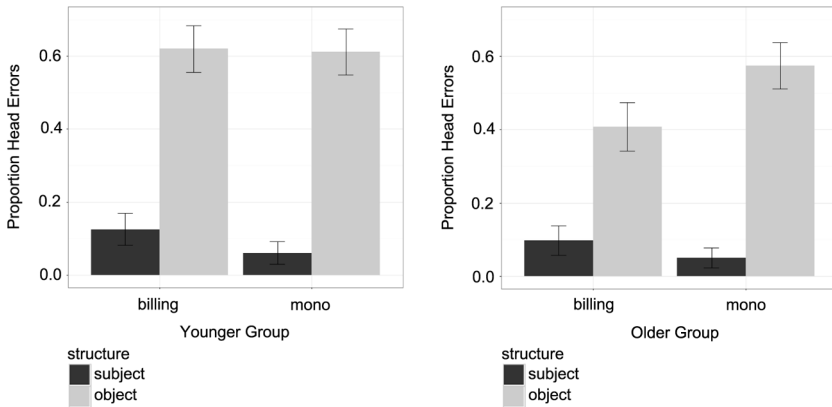


Figure 4. Bilinguals' and monolinguals' mean proportion of head errors (and standard errors) for Mandarin subject and object RCs by age group.

Error analyses

Analyses of Mandarin errors

Children's errors provide valuable additional insights into the processes underlying acquisition. In particular, in addressing our second research question, we predicted that bilingual children would make more head errors on Mandarin object RCs if they were affected by crosslinguistic influence from English. Head errors were the most common (monolinguals: 32.42%, bilinguals: 31.36%), with fewer reversal (monolinguals: 4.98%, bilinguals: 8.64%) and other errors (monolinguals: 10.49%, bilinguals: 9.77%). Only head and reversal errors were analyzed, as they are readily interpretable responses. Figure 4 shows the children's head errors by age and language group; Figure 5 shows the children's reversal errors.

All groups made more head errors on object RCs, children's reversal errors varied across the groups, although large standard errors suggest that this variation was not

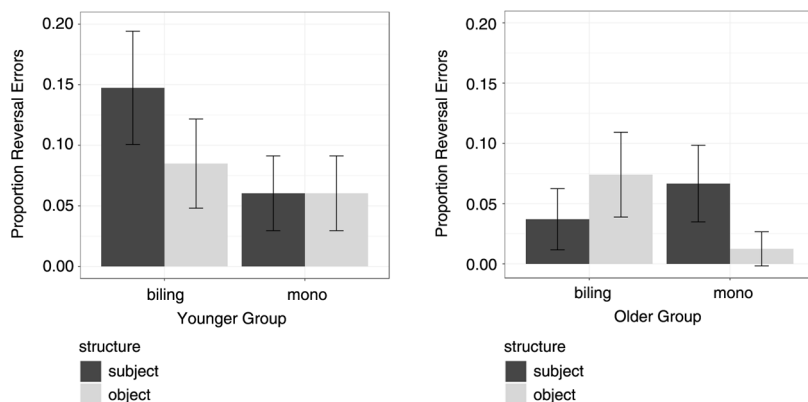


Figure 5. Bilinguals' and monolinguals' mean proportion of reversal errors (and standard errors) for Mandarin subject and object RCs by age group.

systematic. Each error type was analyzed using the same strategy as was used for the correct responses. For head errors, the null model contained random effects of participants and items and the random slope of structure across participants. There were two significant fixed effects; namely, there was a significant main effect of structure, $\chi^2 = 77.15$, $df = 1$, $p < .001$, showing that children made significant more head errors on object RCs than on subject RCs overall, $\beta = -3.77$, $SE(\beta) = .40$, $z = -9.46$, $p < .001$, and a significant main effect of age group, $\chi^2 = 6.61$, $df = 1$, $p = .01$, showing that younger children made more head errors overall, $\beta = 0.63$, $SE(\beta) = .24$, $z = 2.59$, $p = .001$.

For the reversal errors, the null model contained random effects of participants and items and the random slope of structure across participants. There was a significant main effect for group, $\chi^2 = 4.33$, $df = 1$, $p = .037$, showing that monolinguals made fewer reversal errors than the bilinguals, $\beta = -0.59$, $SE(\beta) = .28$, $z = -2.09$, $p = .037$. There was also a significant main effect for age group, $\chi^2 = 12.12$, $df = 1$, $p < .001$, showing that children made fewer reversal errors as they got older, $\beta = 1.05$, $SE(\beta) = .31$, $z = 3.41$, $p < .001$. No other effects were significant.

Analysis of English errors

The most common error that the bilingual children made in English was once again the head error (18.86%), followed by reversal errors (4.32%) and other errors (1%). Figure 6 shows the children's head and reversal errors by structure and age group.

The younger children made more head and reversal errors than the older children overall, but were particularly likely to make them on object RCs. The null model for head errors contained random effects for participants and items and by-participant slope for the fixed effect of structure. The main effect of structure did not significantly add to the model, $\chi^2 = 0.61$, $df = 1$, $p = .44$, whereas the main effect of age did, $\chi^2 = 14.06$, $df = 1$, $p < .001$, confirming that younger children made more head errors than the older children overall, $\beta = 3.43$, $SE(\beta) = .86$,

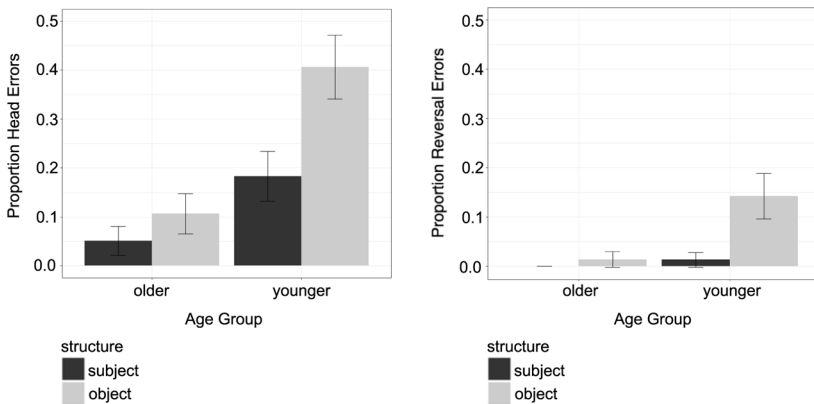


Figure 6. Bilingual children's (a) head errors and (b) reversal errors by structure and age group in English.

$z = 4.004$, $p < .001$. The Structure \times Age interaction was significant, $\chi^2 = 7.12$, $df = 2$, $p = .028$, which was driven by the fact that the younger children made significantly more head errors on object than on subject RCs, $\beta = -1.33$, $SE(\beta) = .53$, $z = -2.51$, $p = .012$, whereas there was no difference for the older children, $\beta = 0.32$, $SE(\beta) = .86$, $z = 0.37$, $p = .71$. We did not analyze the reversal errors because most cells contained very low numbers, with most of these errors being made by young children on object RCs.

Individual differences analyses

We have observed a robust subject RC preference in both groups, which was driven by the fact that children made a significant number of head errors for object RCs. Recall that head errors in Chinese object RCs occur when children select the RC subject as opposed to the head noun. In this instance, they are choosing the agent of the sentence rather than the patient. Kidd et al. (2015a) and Chan et al. (2017) suggested that the preponderance of head errors in Cantonese–English bilinguals (as opposed to monolinguals, who made the error less often) could be due to the surface structure overlap between Cantonese object RCs and simple transitive clauses, both of which in Chinese are SVO, and English SVO transitives and subject RCs.

The current data from Mandarin show that, in comparison to the Cantonese data, head errors are common in both monolingual and bilingual children, and therefore in Mandarin they cannot be due to crosslinguistic transfer alone, at least as we have analyzed them at the group level. While the groups looked very similar in their performance, their different language experience could mean that these similarities mask different underlying processes. In our next set of analyses, we investigated whether individual differences in each group's experience with their language(s) affected their comprehension. Table 6 shows the simple bivariate correlations between Mandarin vocabulary, age (in months), bilingual dominance, and subject and object RC accuracy.² Dominance was operationalized by computing

Table 6. Simple bivariate correlations between Mandarin vocabulary, age (in months), bilingual dominance, and subject and object RC accuracy for monolingual and bilingual children

	Monolingual ^a			Bilingual ^b			Dominance
	Vocab	SRC	ORC	Vocab	SRC	ORC	
Age	.521**	.259*	.187	.478**	.54**	.27*	.199
Vocab		.334**	.041		.467**	.469**	-.634***
SRC			.246			.318*	-.015
ORC							-.303*

^a*N* = 59. ^b*N* = 55. **p* < .05. ***p* < .01. ****p* < .001.

a difference score, subtracting the bilingual children's Mandarin PPVT score from their English PPVT score, and converting the difference to a *z* score.

Table 6 shows a slightly different pattern of correlations for the monolingual and bilingual children. In the monolingual children, subject RC but not object RC accuracy was significantly associated with both age and vocabulary size, whereas in the bilingual children, age and vocabulary were positively associated with both structures. In addition, bilingual dominance was negatively associated with object RC accuracy, but not subject RC accuracy. Note the negative correlation indicates that children who were more English dominant were less accurate on Mandarin object RCs (for scatterplots see Appendix B).

We followed up these correlational analyses with mixed-models analyses. We analyzed each language group (monolingual vs. bilingual) separately, for the following reasons. It proved very difficult to model the full data set with additional variables such as vocabulary size. A large component of this was our age group measure. Dividing the two language groups meant that we could do away with the age group variable, and instead model the data with continuous variables of age (in months) and language experience (as measured by the PPVT).

We modeled the monolingual group's accuracy data using the continuous variables of vocabulary and age (in months), which were converted to *z* scores therefore zero-centred to reduce collinearity. Only the main effect of age, $\chi^2 = 4.69$, *df* = 1, *p* = .03, improved model fit over and above structure and the random effects structure, with children becoming more accurate with age, $\beta = 0.28$, $SE(\beta) = .13$, $z = 2.21$, *p* = .027. Thus, although the simple correlations suggested that the children's performance on subject RCs was associated with both age and vocabulary, these specific effects did not survive more in-depth scrutiny.

For the bilingual children, we investigated whether individual differences in two independent measures of linguistic experience affected children's comprehension: (a) Mandarin vocabulary, and (b) dominance (in addition to age). Mandarin vocabulary and age were *z*-transformed and therefore zero-centred. Including random slopes in the analyses meant that many models containing higher order interaction terms did not converge. We therefore modeled the data without random slopes, and modeled the influence of Mandarin vocabulary and dominance on children's performance separately.

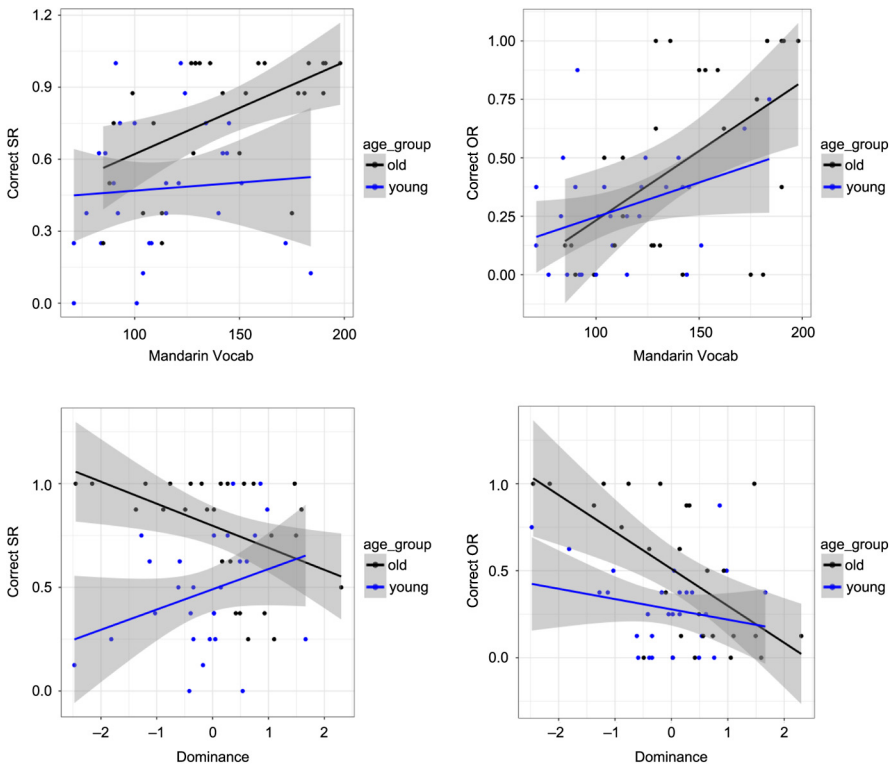


Figure 7. Scatterplots depicting the relationship between Mandarin vocabulary and subject and object RC accuracy (upper panels) by age, and the relationship between language dominance and subject and object RC accuracy (lower panels) by age.

When Mandarin vocabulary was included as a predictor there were significant main effects of structure, $\beta = 1.2$, $SE(\beta) = .18$, $z = 6.83$, $p < .001$, and vocabulary, $\beta = 0.9$, $SE(\beta) = .22$, $z = 4.12$, $p < .001$, and a three-way Structure \times Age \times Vocabulary interaction, $\beta = 0.44$, $SE(\beta) = .17$, $z = 2.55$, $p = .012$. The top panels of Figure 7 plot this interaction, with age represented by the two groups formed via the median split. As can be seen, whereas Mandarin vocabulary is positively related to the older children's comprehension of both subject and object RCs, it is only positively related to the younger children's comprehension of object RCs.

A similar effect was found when we replaced vocabulary with dominance as a predictor variable. There were significant main effects of structure, $\beta = 1.58$, $SE(\beta) = .2$, $z = 7.72$, $p < .001$, age, $\beta = 0.73$, $SE(\beta) = .2$, $z = 3.65$, $p < .001$, and dominance, $\beta = -0.79$, $SE(\beta) = .2$, $z = -3.85$, $p < .001$, and a significant three-way Structure \times Age \times Dominance interaction, $\beta = -0.74$, $SE(\beta) = .23$, $z = -3.2$, $p = .001$. The lower panels of Figure 7 plot the interaction, which shows a uniformly negative relationship between dominance and comprehension accuracy for both subject and object RCs in the older children, but either weaker patterns of association (object RCs) or the opposite pattern in the younger children (subject RCs).

We cannot compare the models using log-likelihood ratio tests because they are not nested, so we instead compared model fit using their Bayesian information criteria (BIC). The BIC is a measure of information loss, and so a lower BIC is indicative of better model fit. Following Kass and Rafferty's (1995) criteria, a difference in BICs of 0–2 is “not worth more than a bare mention,” a difference of 2–6 is positive evidence in favor of the model with the lower BIC, a difference between 6 and 10 is strong evidence, and a difference over 10 is very strong evidence. The model containing Mandarin vocabulary as a predictor had a BIC of 1,045.1, whereas the model with dominance as a predictor had a BIC of 1,038.1. Thus, there is difference of 7 in favor of the model containing dominance, and thus there is strong evidence in favor of this model than the one containing Mandarin vocabulary.

Crosslinguistic transfer at the individual level

In our final analyses we modeled individual differences in the bilingual children's head errors. Specifically, if the bilingual children's head errors are related to cross-linguistic influence, we should expect that head error rate to be related to the children's individual pattern of dominance, such that children who are more English dominant make a greater amount of head errors in object RCs. We used the same analysis strategy followed in the previous individual differences analysis of the bilingual children's accuracy. The results revealed significant main effects of structure, $\beta = -2.97$, $SE(\beta) = .31$, $z = -9.63$, $p < .001$, age, $\beta = -0.72$, $SE(\beta) = .17$, $z = -4.14$, $p < .001$, dominance, $\beta = 0.67$, $SE(\beta) = .18$, $z = 3.7$, $p < .001$, and a significant three-way Structure \times Age \times Dominance interaction, $\beta = 0.87$, $SE(\beta) = .28$, $z = 3.09$, $p = .002$. Follow-up analyses of object RCs showed that head errors significantly decreased with age, $\beta = -0.91$, $SE(\beta) = .28$, $z = -3.24$, $p = .001$, and significantly increased with greater English dominance, $\beta = 0.86$, $SE(\beta) = .24$, $z = 3.02$, $p = .003$. For subject RCs, there was a significant main effect of dominance, $\beta = 0.90$, $SE(\beta) = .44$, $z = 2.64$, $p = .04$, which was subsumed by an Age \times Dominance interaction, $\beta = 1.4$, $SE(\beta) = .53$, $z = 2.64$, $p = .008$. As in the accuracy data (Table 6), the interaction was driven by the fact that English dominance was significantly and positively associated with head errors for subject RCs in the older children (Spearman's $\rho = .51$, $p = .007$) but not the younger children (Spearman's $\rho = .02$, $p = .92$).³ However, this result is not particularly meaningful, as only 6 out of 27 children in the older group made any head errors on subject RCs.

Discussion

We investigated monolingual Mandarin-speaking and bilingual Mandarin–English children's comprehension of subject and object RCs. Chinese languages are important in theoretical debates regarding the acquisition and processing of RCs because the typologically rare combination of head-final RCs and SVO canonical word order allows the predictions of several theoretical approaches to be tested in a manner not possible with typically studied European languages. Namely, one class of theories predicts a subject advantage, which is attributable to differences in either formal syntactic complexity (Friedmann *et al.*, 2009; Lin & Bever, 2006) or structural

frequency (Vasisth et al., 2013; Yun et al., 2015). In contrast, another class of theories predict an object advantage attributable to properties of the surface structure, namely, the linear filler-gap distance (Gibson, 1998) or the similarity between Mandarin object RCs and canonical word order (Diessel, 2007). Accordingly, our first research question asked how our monolingual and bilingual children processed Mandarin subject and object RCs. The combination of English and Mandarin in our bilingual sample also enabled us to test for the presence of crosslinguistic transfer, which has been demonstrated in Cantonese–English bilinguals (Kidd et al., 2015a). Therefore, our second research question asked whether bilinguals would make more errors on object RCs because crosslinguistic transfer from English could lead them to interpret object RCs as simple transitives or as head-initial RCs.

The answer to our first question was overwhelmingly clear: both the monolinguals and the bilinguals in both age groups performed significantly better on subject than on object RCs, supporting theories that predict a subject advantage. Given that several theoretical approaches predict a subject advantage, it is important to consider whether we can distinguish between them. The major division between the theoretical approaches concerns the degree to which they explain syntactic processing as dependent on formal structural knowledge versus experience-induced parsing routines. On the one hand, formal approaches explain the subject–object asymmetry in Mandarin as reflecting differences in processing hierarchical structures (Friedmann et al., 2009; Lin & Bever, 2006), attributing the complexity effect to the fact that it is more costly to process object RCs because they have a longer structural–hierarchical filler-gap distance and/or involve structural intervention effects, whereby the RC subject intervenes between the head noun and the gap (for specific Mandarin examples, see Chan et al., 2017). On the other hand, experience-based accounts argue that the subject preference derives from a probabilistically-oriented parsing mechanism that derives syntactic predictions from input distributions (e.g., Levy, 2008; Vasisth et al., 2013; Yun et al., 2015). As such, the two explanations differ according to whether they attribute the subject advantage to a deep property of formal syntactic machinery or to language-specific input distributions.

The acquisition data alone cannot yet decide between the two explanations, but there are multiple sources of evidence that point to experience-based approaches having greater explanatory value. The crucial difference in the predictions of the two approaches is that, whereas the formal approach predicts across the board difficulty for object RCs, the experience-based approach does not. Therefore, demonstrations of processing or acquisition difficulty for either structural type that is predicted by input distributions constitutes evidence in support of the experience-based approach. Hsiao and MacDonald (2013) and Vasisth et al. (2013) have reported analyses of written corpora that show that subject RCs are more frequent than object RCs. In addition, Vasisth et al. showed that sentence strings following the surface structure pattern of subject RCs (V–NP–*de*–NP) are also more frequent than strings following the object RC surface structure pattern (NP–V–*de*–NP). Thus, corpus data point toward a subject advantage. Computational models of sentence parsing either learn from (Hsiao & MacDonald, 2013) or instantiate these frequency distributions (Yun et al., 2015), and therefore make incremental predictions about sentence difficulty. Behavioral data bear out some of these predictions,

such as the fact that the subject preference is modulated by whether the RC modifies the main clause subject or object (Jäger, Chen, Li, Lin, & Vasishth, 2015), specific distributions of animate versus inanimate nouns (Wu, Kaiser, & Andersen, 2012), and that complexity effects arise for each structure at different points in a sentence (Mansbridge, Tamaoka, Xiong, & Verdonschot, 2017).

Our data do not allow us to scrutinize online complexity effects; however, two lines of evidence suggest that distributional information influences acquisition. The first concerns the input. Following suggestions from an anonymous reviewer, we extracted all subject and object RC-like structures in the input to children from all morphologically tagged Mandarin corpora on CHILDES (MacWhinney, 2000; approximately 380,000 words in total).⁴ The structures were “RC-like” in that they had the same surface structure as Mandarin subject [V–N–*de*–(N)] and object [N–V–*de*–(N)] RCs, but due to the plurifunctionality of *de* as a modification marker may not be RCs. Consistent with Vasishth *et al.* (2013), we found that subject RC-like sequences were three times more frequent than object-like RC sequences (1430 vs. 473). When we restrict our analysis to true RCs only, we see the opposite effect: object RCs are more frequent than subject RCs (95 vs. 26). Consistent with similar analyses in other languages (Diessel, 2009; Kidd *et al.*, 2007; Kirjavainen *et al.*, 2017), the majority of the object RCs had inanimate head nouns (90 inanimate vs. 5 animate), whereas animacy in subject RC head nouns was more balanced (16 inanimate vs. 10 animate).

These input data provide a potential explanation for the difference between Chen and Shirai’s (2015) data and what appears to be a subject preference in experimental work. If Mandarin-speaking children are acquiring object RCs first then early in development, they are homing in on the distributions of the specific structures, which are likely used to talk about inanimate entities. In contrast, two features of experimental studies point to difficulties with object RCs. First, all experimental studies to date have tested object RCs with animate heads, which are infrequent. In comprehension the high preponderance of head errors appears to be due to the tendency to identify early appearing animate nouns as agents *and* topics. In Mandarin this results in correct thematic role assignment (see below), but an ultimately incorrect interpretation of the function of the structure, which is to topicalize the patient. Second, because Mandarin RCs are head-final and because *de* is plurifunctional, the identity of test sentences as RCs is not obvious until the end of the sentence. Thus, the specific distributional frequencies of Mandarin RCs may be less relevant than the general RC-like frequencies, which favor subject RC analyses. That is, following experience-based accounts of Mandarin language processing that make structural predictions based on distributional frequencies (e.g., Vasishth *et al.*, 2013; Yun *et al.*, 2015), children have more exposure to V–N–*de*–(N) sequences that have the same form–function mapping of nouns to argument roles, making them easier to process. In contrast, the object-like RC pattern competes with frequent SVO transitives, which appears to garden path the children into producing head errors, to which we now turn.

Although there were slight differences in design, the large number of head errors in object RC trials in both of our Mandarin-speaking groups was consistent with a similar study with monolinguals conducted by Hu *et al.* (2016; see also Hu & Guasti, 2017). This pattern of errors is significantly different in children acquiring languages

with postnominal RCs (e.g., Catalan: Gavarró, Adani, Ramon, Rusiñol, & Sanchez, 2012; Italian: Adani, 2011; Persian: Rahmany, Marefat, & Kidd, 2011; Hebrew: Arnon, 2005), where children typically make more reversal errors.⁵ In any one language the two error types no doubt reflect different processes: a head error reflects incorrect identification of the head noun, whereas a reversal error reflects incorrect thematic role assignment. However, crosslinguistically this complementary distribution of head and reversal errors could reflect the same underlying process: the tendency to identify the first noun as agent/topic (Bates & MacWhinney, 1989; Bornkessel-Scheslewsky & Scheslewsky, 2009; or “subject prominence,” Kim & O’Grady, 2016; O’Grady, 2011). Thus, head errors in Mandarin are common because the structure competes with a simple and preferred SVO transitive analysis. In contrast, in a language like Italian a preference to assign agency early emerges as a reversal error because there is no surface structure overlap with canonical word order. Adani’s (2011) Italian data are instructive here, because her study manipulated word order. When object RCs had OSV word order (e.g., *il cavallo che stanno i leoni inseguendo* “the horse that the lions are chasing”), children made an average of 16.8% reversal errors versus 6.4% head errors. However, as Italian allows postverbal subjects, she also tested children on OVS RCs (e.g., *il cavallo che stanno inseguendo i leoni*), where reversal errors jumped to an average of 44% and head errors were virtually nonexistent (1%). Thus, when children heard a NVN sequence, they had a preference to interpret them as SVO.⁶ In Italian this results in incorrect thematic role assignment and therefore a reversal error, whereas in Mandarin it results in correct thematic role assignment but a failure to interpret the structure as a “head-final” RC.

Thus there is evidence in the adult language processing and crosslinguistic child language acquisition data to argue that object RC difficulty is significantly influenced by individual properties of the target language. While some processing preferences such as the tendency to assume early occurring nouns as agents may be core properties of the parsing system (moderated by NP typicality, e.g., animacy), structure-specific and more general word order regularities that differ across languages will influence acquisition and processing in a language-specific manner. Determining exactly which aspects of input distributions affect acquisition is a priority. While theoretical approaches like usage-based theory identify a key role for input distributions in acquisition, the data suggest that previous proposals made within usage-based accounts have been too simplistic. Diessel’s (2007) proposal that the overlap between simple transitives and object RCs in Chinese facilitates acquisition of object RCs in Chinese does not capture the full extent of the data. Instead, frequency information at multiple levels of granularity appear to play a role. While it appears that object RCs are first acquired (Chen & Shirai, 2015), these are likely restricted in form and function. The emergence of a subject preference that is modulated by several language-specific characteristics appears an outcome of a complex interplay between syntax–semantics correlations (e.g., distribution of animacy in syntactic roles), the specific distribution of RC types, and the distribution of related and competing structures in the input. A comprehensive account of RC acquisition in Chinese thus requires studies that triangulate and integrate corpus, experimental, and computational approaches.

Turning now to our second question, we observed results consistent with crosslinguistic transfer from English to Mandarin at the individual but not the group level. In particular, we found that dominance patterns significantly predicted the bilingual children's accuracy and head error rates. The models that included dominance fit better than models containing Mandarin vocabulary as a predictor, suggesting that the children's combined knowledge of their two languages affected their comprehension of Mandarin RCs. Thus we can conclude that relative strength in Mandarin ensures correct comprehension, but comparative English dominance makes children vulnerable to making head errors.

These relationships were strongest in the older children (see Figure 7), despite the fact that the two age groups did not differ in the distribution of dominance scores,⁷ and at the group level the older children had higher vocabularies in both languages. What we may be observing here is a more general effect of the community language on the older children. According to their parental ratings, the older children spent significantly more time in English-speaking than Mandarin-speaking environments, whereas this was not the case for the younger children. The older group was also more cognitively and linguistically mature than the younger group, and their superior accuracy is likely due to their ability to negotiate syntactic complexity accordingly (e.g., Kidd & Arciuli, 2016, showed that English-speaking children's comprehension of object RCs was predicted by a combination of statistical learning, working memory, and vocabulary). Even though the older children were more accurate overall in comprehending the test sentences, greater exposure to the community language may promote greater competition between English and Mandarin processing strategies in children who are more English dominant. That is, consistent with work conducted within the Competition Model (Bates & MacWhinney, 1989), there may be intensification of cue strength in the English-dominant children across development, such that a developmental outcome of the combination of their two languages leads to a stronger preference to interpret the first noun as an agent/head noun (Chan *et al.*, 2017; Reyes & Hernandez, 2006). In contrast, the more Mandarin-dominant children would have a greater expectation that noun modifying constructions in Mandarin are head-final.

One outstanding issue this study highlights is the apparent difference in RC acquisition between Mandarin- and Cantonese-acquiring children. Using the same referent selection method as used in the current study, both Kidd *et al.* (2015a) and Chan *et al.* (2017) found that Cantonese-speaking monolingual children show a nonsignificant object advantage in acquisition, and thus make fewer head errors. Both studies tested CL RCs, as in sentence (9), rewritten as (11) below.

- (11) [lou5syu2 sek3 ___] go2 zek3 gung1gai1
 mouse kiss DEM CL chicken
 "The chicken that the mouse kisses"
- (12) [lou5syu2 sek3 ___] ge3 gung1gai1
 mouse kiss RL chicken
 "The chicken that the mouse kisses"

As discussed above, object CL RCs are isomorphic to simple SVO sentences. While this appeared to present problems to the bilingual children in Kidd *et al.*

(2015a), they presumably do not present too much of a problem to monolingual Cantonese-speaking children. The reason for this may be closely linked to the distributional properties of CL RCs. In an eye-tracking study, Chan et al. (2018) reported a significant object-over-subject advantage in 4-year-old monolingual Cantonese-speaking children's online processing of CL RCs, and a significant subject-over-object advantage for *ge3* RCs (sentence [12]). A corpus analysis showed that CL RCs more often modify objects, whereas *ge3* RCs are vanishingly rare in the input (no examples were attested). Thus, the input provides good evidence for an object RC analysis for CL RCs despite the structural ambiguity and may enable children to override a preference to analyze the first noun as the sentential topic. However, although *ge3* provides an informative cue as a relative marker, the rarity of *ge3* RC in child-directed speech suggests that it is late acquired and *ge3* may not be a strong enough cue for young children to use. Syntactically, *ge3* behaves more like Mandarin *de* (Cheung & Li, 2015), although *de* is much more common in the input, with our own and several other corpus analyses showing that subject-like RC patterns are more frequent (Hsiao & MacDonald, 2013; Vasissth et al., 2013). Thus one difference across the two Chinese languages could be due to language-specific features of the input distribution that interact with more general processing preferences linked to subject prominence. In Cantonese one relativization strategy (CL RCs) pulls in the direction of object RCs and one does not (*ge3*), and in Mandarin the relativization strategy studied (*de*) pulls in the direction of subject RCs.

Some methodological limitations merit comment. We operationalized dominance based on the bilingual children's vocabulary scores in their two languages. One particular advantage of using a vocabulary inventory instead of a test of grammar is that the results are directly comparable because they test children's linguistic knowledge for the same concepts in their two languages, whereas tests of grammar across languages will naturally differ. However, while standardized tests like the PPVT-4 are considered measures of general verbal ability and are therefore correlated with children's syntactic knowledge (e.g., see Kidd & Arciuli 2016), it is typically assumed that the lexical and grammatical systems are at least partially separate. Therefore, future studies could operationalize dominance based on measures of grammar in addition to vocabulary (for discussions on measuring language dominance see papers in Silva-Corvalan & Treffers-Daller, 2016). One additional limitation concerns our bilingual group. Because they were living in Australia, it is possible that our data are not generalizable to Mandarin–English bilinguals living in predominantly Mandarin-speaking societies (e.g., Mainland China, Taiwan). It would be very interesting to compare the current data to a Mandarin–English bilingual group living in those countries where Mandarin is the community language, and those places where Mandarin is used with high or increasing frequency (e.g., Singapore, Hong Kong).

Conclusions

We investigated monolingual Mandarin-speaking and Mandarin–English bilingual children's comprehension of Mandarin subject and object RCs. Past research on monolingual acquisition has produced an inconsistent pattern of results, which we have argued is for a large part due to methodological problems. There is also

very little data on the topic from multilingual children (though see Chan *et al.*, 2017; Jia & Paradis, 2018). Our results suggest that, for the comprehension of transitive RCs containing two animate nouns, there is a reliable subject RC preference in both monolingual and bilingual Mandarin-speaking children, which we have argued reflects a general preference to process early occurring nouns as agents and language-specific distributional frequencies that favor relativization on subjects. Future experimental research is required to determine whether and how this preference in comprehension is modulated by other factors (e.g., animacy or individual variability in cognitive skill), and whether the same factors influence production. We also reported that the bilinguals' comprehension was significantly affected by their Mandarin vocabulary and their dominance pattern between their two languages, suggesting that, while the monolingual and bilingual groups performed similarly on the comprehension task, their underlying parsing system may weigh cues to comprehension in a qualitatively different manner.

Author ORCIDs.  Evan Kidd 0000-0003-4301-2290, Angel Chan 0000-0002-9547-0210

Acknowledgments. This research was supported by Australian Research Council Grant CE140100041 (to E.K.). We thank the children, families, and school/community groups who participated in the research, and Sharon Unsworth, Annie Tremblay, and three anonymous reviewers for helpful suggestions.

Notes

1. All pairwise comparisons using *t* tests and Wilcoxon signed ranks tests report two-tailed *p* values.
2. All correlations reported in Table 6 are Spearman rank order correlations, as only age and dominance were normally distributed. For scatterplots see Appendix B.
3. In contrast to the differential effect of dominance on head errors, similar analyses run with Mandarin vocabulary only revealed a significant main effect of vocabulary, $\beta = -0.74$, $SE(\beta) = .18$, $z = -4.11$, $p < .001$, such that lower vocabulary was associated with greater head errors overall. Once again using Kass and Rafferty's (1995) guidelines, a comparison of BIC suggests *very strong evidence* in favor of the model that included dominance (BIC = 878.3) over the model that included Mandarin vocabulary as a predictor (BIC = 889.6), with a difference of 11.3.
4. The corpora were as follows: AcadLang (<https://chilides.talkbank.org/access/Chinese/Mandarin/AcadLang.html>), Chang1 and Chang2 (Chang, 1998), Tong (Deng & Yip, 2018), and Zhou1 (Zhou, 2001), and Zhou2 (Li & Zhou, 2004).
5. Our young bilingual children made significantly more head errors in English as well as Mandarin, which may be an effect of bilingualism on their English error patterns.
6. The OVS RCs in Adani's (2011) stimuli were disambiguated to an object RC reading using a mismatch in number. Without the number dissimilarity, the sentence is ambiguous between a subject and object RC reading, with the object RC reading being strongly dispreferred in L1 speaking adults (Nitschke, Kidd, & Serratrice, 2010).
7. An independent-samples *t* test comparing the *z*-normalized dominance scores of the two groups was not significant: $t(55) = 1.0$, $p = .323$, $d = 0.27$.

References

- Adani, F. (2011). Rethinking the acquisition of relative clauses in Italian: Towards a grammatically based account. *Journal of Child Language*, 38, 141–165.
- Ambridge, B., Kidd, E., Rowl and C. F., & Theakston, A. L. (2015). The ubiquity of frequency effects in first language acquisition. *Journal of Child Language*, 42, 239–273.

- Arnon, I. (2005). Relative clause acquisition in Hebrew: Towards a processing-oriented account. In *Proceedings of the 29th Boston University conference on language development* (Vol. 29, pp. 37–48). Somerville, MA: Cascadilla Press.
- Arnon, I. (2010). Rethinking child difficulty: The effect of NP type on children's processing of relative clauses in Hebrew. *Journal of Child Language*, 37, 27–57.
- Barr, D. J., Levy, R., Scheepers, C., & Tily, H. J. (2013). Random effects structure for confirmatory hypothesis testing: Keep it maximal. *Journal of Memory and Language*, 68, 255–278.
- Bates, E., & MacWhinney, B. (1989). Functionalism and the competition model. In B. MacWhinney and E. Bates (Eds.), *The crosslinguistic study of sentence processing* (pp. 3–76). New York: Cambridge University Press.
- Bates, D., Maechler, M., Bolker, B., & Walker, S. (2015). Fitting linear mixed-effects models using lme4. *Journal of Statistical Software*, 67, 1–48.
- Bavin, E. L., Kidd, E., Prendergast, L. A., & Baker, E. K. (2016). Young children with ASD use lexical and referential information during on-line sentence processing. *Frontiers in Psychology*, 7, 171.
- Bornkessel-Schlesewsky, I., & Schlesewsky, M. (2009). The role of prominence information in the real-time comprehension of transitive constructions: A cross-linguistic approach. *Language and Linguistics Compass*, 3, 19–58.
- Brandt, S., Kidd, E., Lieven, E., & Tomasello, M. (2009). The discourse bases of relativization: An investigation of young German- and English-speaking children's comprehension of relative clauses. *Cognitive Linguistics*, 20, 539–570.
- Carreiras, M., Duñabeitia, J. A., Vergara, M., de La Cruz-Pavía, I., & Laka, I. (2010). Subject relative clauses are not universally easier to process: Evidence from Basque. *Cognition*, 115, 79–92.
- Chan, A., Chen, S., Matthews, S., & Yip, V. (2017). Comprehension of subject and object relative clauses in a trilingual acquisition context. *Frontiers in Psychology*, 8, 1641. doi: 10.3389/fpsyg.2017.01641
- Chan, A., Matthews, S., & Yip, V. (2011). The acquisition of relative clauses in Cantonese and Mandarin. In E. Kidd (Ed.), *The acquisition of relative clauses: Functional and typological perspectives* (pp. 197–225). Amsterdam: Benjamins.
- Chan, A., Yang, W. C., Chang, F., & Kidd, E. (2018). Four-year-old Cantonese-speaking children's online processing of relative clauses: A permutation analysis. *Journal of Child Language*, 45, 174–203.
- Chang, C. (1998). The development of autonomy in preschool Mandarin Chinese-speaking children's play narratives. *Narrative Inquiry*, 8, 77–111.
- Chang, H. W. (1984). The comprehension of complex Chinese sentences by children: Relative clause. *Chinese Journal of Psychology*, 26, 57–66.
- Chen, J., & Shirai, Y. (2015). The acquisition of relative clauses in spontaneous child speech in Mandarin Chinese. *Journal of Child Language*, 20, 1–29.
- Cheng, S. Y.-Y. (1995). *The acquisition of relative clauses in Chinese* (Unpublished MA thesis, National Taiwan Normal University).
- Cheung, C. C. H., & Li, H. Z. (2015). Inner and outer modifiers in Mandarin and Cantonese. *Linguistic Sciences*, 14, 449–458.
- Choi, Y., & Trueswell, J. C. (2010). Children's (in)ability to recover from garden paths in a verb-final language: Evidence for developing control in sentence processing. *Journal of Experimental Child Psychology*, 106, 41–61.
- Corrêa, L. M. S. (1995). An alternative assessment of children's comprehension of relative clauses. *Journal of Psycholinguistic Research*, 24, 183–203.
- Courtney, E. H. (2006). Adult and child production of Quechua relative clauses. *First Language*, 26, 317–338.
- Courtney, E. H. (2011). Learning to produce Quechua relative clauses. In E. Kidd (Ed.), *The acquisition of relative clauses: Functional and typological perspectives* (pp. 141–172). Amsterdam: Benjamins.
- Deng, X., & Yip, V. (2018). A multimedia corpus of child Mandarin: The Tong corpus. *Journal of Chinese Linguistics*, 46, 69–92.
- Diessel, H. (2007). A construction-based analysis of the acquisition of East Asian relative clauses. *Studies in Second Language Acquisition*, 29, 311–320.
- Diessel, H. (2009). On the role of frequency and similarity in the acquisition of subject and non-subject relative clauses. In T. Givón, and M. Shibatani (Eds.), *Syntactic complexity* (pp. 251–276). Amsterdam: Benjamins.

- Diessel, H., & Tomasello, M.** (2000). The development of relative clauses in English. *Cognitive Linguistics*, **11**, 131–151.
- Döpke, S.** (1998). Competing language structures: The acquisition of verb placement by bilingual German-English children. *Journal of Child Language*, **25**, 555–584.
- Dryer, M.** (2005). Order of subject, object, and verb. In M. Haspelmath, M. Dryer, D. Gil and B. Comrie (Eds.), *The world atlas of language structures* (Chap. 96). Oxford: Oxford University Press.
- Dunn, D. M., & Dunn, L. M.** (2007). *Peabody Picture Vocabulary Test* (4th ed.). Minneapolis, MN: Pearson.
- Foroodi-Nejad, F., & Paradis, J.** (2009). Crosslinguistic transfer in the acquisition of compound words in Persian–English bilinguals. *Bilingualism: Language and Cognition*, **12**, 411–427.
- Fox, B. A., & Thompson, S. A.** (1990). A discourse explanation of the grammar of relative clauses in English conversation. *Language*, **66**, 297–316.
- Friedmann, N., Belletti, A., & Rizzi, L.** (2009). Relativized relatives: Types of intervention in the acquisition of A-bar dependencies. *Lingua*, **119**, 67–88.
- Gavarró, A., Adani, F., Ramon, M., Rusiñol, S., & Sánchez, R.** (2012). La comprensió de les clàusules de relatiu en català infantil. *Caplletra. Revista Internacional de Filologia*, **53**, 91–105.
- Gennari, S. P., & MacDonald, M. C.** (2008). Semantic indeterminacy in object relative clauses. *Journal of Memory and Language*, **58**, 161–187.
- Gibson, E.** (1998). Linguistic complexity: Locality of syntactic dependencies. *Cognition*, **68**, 1–76.
- Gibson, E.** (2000). The dependency locality theory: A distance-based theory of linguistic complexity. In Y. Miyashita, A. Marantz and W. O’Neil (Eds.), *Image, language, brain* (pp. 95–126). Cambridge, MA: MIT Press.
- Gutierrez-Mangado, M. J.** (2011). Children’s comprehension of relative clauses in an ergative language: The case of Basque. *Language Acquisition*, **18**, 176–201.
- Hamburger, H., & Crain, S.** (1982). Relative acquisition. In S. Kuczaj II (Ed.), *Language development: Vol. 1. Syntax and semantics* (pp. 245–274). Hilldale, NJ: Erlbaum.
- Hartsuiker, R. J., Pickering, M. J., & Veltkamp, E.** (2004). Is syntax separate or shared between languages? Cross-linguistic syntactic priming in Spanish-English bilinguals. *Psychological Science*, **15**, 409–414.
- He, W., Xu, N., & Ji, R.** (2017). Effects of age and location in Chinese relative clauses processing. *Journal of Psycholinguistic Research*, **46**, 1067–1086.
- Hsiao, F., & Gibson, E.** (2003). Processing relative clauses in Chinese. *Cognition*, **90**, 3–27.
- Hsiao, Y., & MacDonald, M. C.** (2013). Experience and generalization in a connectionist model of Mandarin Chinese relative clause processing. *Frontiers in Psychology*, **4**, 767.
- Hsu, C.-C. N., Hermon, G., & Zukowski, A.** (2009). Young children’s production of head-final relative clauses: Elicited production data from Chinese children. *Journal of East Asian Linguistics*, **18**, 323–360.
- Hu, D.** (2014). *Intervention effects and the acquisition of relativization and topicalization in Chinese* (Unpublished doctoral dissertation, Universitat Autònoma de Barcelona & Università degli Studi di Milano-Bicocca).
- Hu, S., Gavarró, A., & Guasti, M. T.** (2016a). Children’s production of head-final relative clauses: The case of Mandarin. *Applied Psycholinguistics*, **37**, 323–346.
- Hu, S., Gavarró, A., Vernice, M., & Guasti, M. T.** (2016b). The acquisition of Chinese relative clauses: Contrasting two theoretical approaches. *Journal of Child Language*, **43**, 1–21.
- Hu, S., & Guasti, M. T.** (2017). Complexity in the acquisition of relative clauses: Evidence from school-age sequential Mandarin-Italian bilingual children. *Journal of International Chinese Education*, **2**, 121–156.
- Jäger, L., Chen, Z., Li, Q., Lin, C. J. C., & Vasishth, S.** (2015). The subject-relative advantage in Chinese: Evidence for expectation-based processing. *Journal of Memory and Language*, **79**, 97–120.
- Jia, R., & Paradis, J.** (2018). The acquisition of relative clauses by Mandarin heritage language children. *Linguistic Approaches to Bilingualism*. Advance online publication. doi: [10.1075/lab.16015.jia](https://doi.org/10.1075/lab.16015.jia)
- Kass, R. E., & Raftery, A. E.** (1995). Bayes factors. *Journal of the American Statistical Association*, **90**, 773–795.
- Keenan, E., & Comrie, B.** (1977). Noun phrase accessibility and Universal Grammar. *Linguistic Inquiry*, **8**, 63–99.
- Kidd, E.** (Ed.) (2011). *The acquisition of relative clauses: Processing, typology and function*. Amsterdam: Benjamins.
- Kidd, E., & Arciuli, J.** (2016). Individual differences in statistical learning predict children’s comprehension of syntax. *Child Development*, **87**, 184–193.

- Kidd, E., & Bavin, E. L. (2002). English-speaking children's comprehension of relative clauses: Evidence for general-cognitive and language-specific constraints on development. *Journal of Psycholinguistic Research*, *31*, 599–617.
- Kidd, E., Brandt, S., Lieven, E., & Tomasello, M. (2007). Object relatives made easy: A cross-linguistic comparison of the constraints influencing young children's processing of relative clauses. *Language and Cognitive Processes*, *22*, 860–897.
- Kidd, E., Chan, A., & Chiu, J. (2015a). Cross-linguistic influence in simultaneous Cantonese–English bilingual children's comprehension of relative clauses. *Bilingualism: Language and Cognition*, *18*, 438–452.
- Kidd, E., Stewart, A. J., & Serratrice, L. (2011). Children do not overcome lexical biases where adults do: The role of the referential scene in garden-path recovery. *Journal of Child Language*, *38*, 222–234.
- Kidd, E., Tennant, E., & Nitschke, S. (2015b). Shared abstract representation of linguistic structure in bilingual sentence comprehension. *Psychonomic Bulletin & Review*, *22*, 1062–1067.
- Kim, C. E., & O'Grady, W. (2016). Asymmetries in children's production of relative clauses: Data from English and Korean. *Journal of Child Language*, *43*, 1038–1071.
- Kirjavainen, M., Kidd, E., & Lieven, E. (2017). How do language-specific characteristics affect the acquisition of different relative clause types? Evidence from Finnish. *Journal of Child Language*, *44*, 120–157.
- Kirjavainen, M., & Lieven, E. (2011). The acquisition of relative clauses in Finnish: The effect of input. In E. Kidd (Ed.), *The acquisition of relative clauses: Processing, typology, and function* (pp. 107–139). Amsterdam: Benjamins.
- Lee, T. H.-T. (1992). The inadequacy of processing heuristics—Evidence from relative clause acquisition in Mandarin Chinese. In T. Lee (Ed.), *Research on Chinese linguistics in Hong Kong* (pp. 47–85). Hong Kong: Linguistic Society of Hong Kong.
- Levy, R. (2008). Expectation-based syntactic comprehension. *Cognition*, *106*, 1126–1177.
- Li, X. Y., & Zhou, J. (2004). *The effects of pragmatic skills of mothers with different education on children's pragmatic development* (Master's thesis, Nanjing Normal University, Shanghai, China).
- Lin, C. J. C. (2011). Chinese and English relative clauses: Processing constraints and typological consequences. In Z. Jing-Schmidt (Ed.), *Proceedings of the 23rd North American Conference on Chinese Linguistics* (Vol. 1, pp. 191–199). Eugene, OR: University of Oregon Press.
- Lin, C. J. C., & Bever, T. G. (2006). Subject preference in the processing of relative clauses in Chinese. In D. Baumer, D. Montero and M. Scanlon (Eds.), *Proceedings of the 25th West Coast conference on formal linguistics* (pp. 254–260). Somerville, MA: Cascadilla Proceedings Project.
- MacDonald, M. C. (2013). How language production shapes language form and comprehension. *Frontiers in Psychology*, *4*, 226.
- MacWhinney, B. (2000). *The CHILDES Database: Tools for analyzing talk: Volume 2: The database* (3rd ed.). Mahwah, NJ: Erlbaum.
- Mak, W. M., Vonk, W., & Schriefers, H. (2002). The influence of animacy on relative clause processing. *Journal of Memory and Language*, *47*, 50–68.
- Mansbridge, M. P., Tamaoka, K., Xiong, K., & Verdonschot, R. G. (2017). Ambiguity in the processing of Mandarin Chinese relative clauses: One factor cannot explain it all. *PLOS ONE*, *12*, e0178369.
- Meijer, P. J., & Fox Tree, J. E. (2003). Building syntactic structures in speaking: A bilingual exploration. *Experimental Psychology*, *50*, 184.
- Müller, N. (1998). Transfer in bilingual first language acquisition. *Bilingualism: Language and Cognition*, *1*, 151–171.
- Ning, C. Y., & Liu, H. Y. (2009). *Milestones in the acquisition of Mandarin Chinese based on HUCOLA*. Paper presented in the workshop on Milestones in the First Language Acquisition of Chinese, Hong Kong.
- Nitschke, S., Kidd, E., & Serratrice, L. (2010). First language transfer and long-term structural priming in comprehension. *Language and Cognitive Processes*, *25*, 94–114.
- O'Grady, W. (2011). Relative clauses: Processing and acquisition. In E. Kidd (Ed.), *The acquisition of relative clauses: Functional and typological perspectives* (pp. 13–38). Amsterdam: Benjamins.
- Ozeki, H., & Shirai, Y. (2007a). The consequences of variation in the acquisition of relative clauses: An analysis of longitudinal production data from five Japanese children. In Y. Matsumoto, D. Oshima, O. Robinson and P. Sells (Eds.), *Diversity in language: Perspectives and implications* (pp. 243–270). Chicago: CSLI Publications.
- Ozeki, H., & Shirai, Y. (2007b). Does the noun phrase accessibility hierarchy predict the difficulty order in the acquisition of Japanese relative clauses? *Studies in Second Language Acquisition*, *29*, 169–196.

- Rahmany, R., Marefat, H., & Kidd, E. (2011). Persian speaking children's acquisition of relative clauses. *European Journal of Developmental Psychology*, *8*, 367–388.
- R Core Team. (2017). R: A language and environment for statistical computing. R Foundation for Statistical Computing, Vienna, Austria. Available at <http://www.R-project.org>
- Reyes, I., & Hernández, A. E. (2006). Sentence interpretation strategies in emergent bilingual children and adults. *Bilingualism: Language and Cognition*, *9*, 51–69.
- Silva-Corvalán, C., & Treffers-Daller, J. (2016). Digging into dominance: A closer look at language dominance in bilinguals. In C. Silva-Corvalán and J. Treffers-Daller (Eds.), *Language dominance in bilinguals: Issues of measurement and operationalization* (pp. 1–15). Cambridge: Cambridge University Press.
- Snedeker, J., & Trueswell, J. C. (2004). The developing constraints on parsing decisions: The role of lexical-biases and referential constraints in child and adult sentence processing. *Cognitive Psychology*, *49*, 238–299.
- Su, Y.-C. (2004). *Relatives of Mandarin children*. Paper presented at the Generative Approaches to Language Acquisition in North America Conference, University of Hawai'i, Manoa.
- Suzuki, T. (2011). A case-marking cue for filler-gap dependencies in children's relative clauses in Japanese. *Journal of Child Language*, *38*, 1084–1095.
- Trueswell, J. C., Sekerina, I., Hill, N. M., & Logrip, M. L. (1999). The kindergarten path effect: Studying on-line sentence processing in young children. *Cognition*, *73*, 135–176.
- Tsoi, E. Y. L. (2016). *Simultaneous Mandarin-English bilingual children's comprehension of English and Mandarin relative clauses*. Unpublished undergraduate honours thesis. Canberra, Australia: The Australian National University.
- Vasishth, S., Chen, Z., Li, Q., & Guo, G. (2013). Processing Chinese relative clauses: Evidence for the subject-relative advantage. *PLOS ONE*, *8*, e77006.
- Wells, J. B., Christiansen, M. H., Race, D. S., Acheson, D. J., & MacDonald, M. C. (2009). Experience and sentence processing: Statistical learning and relative clause comprehension. *Cognitive Psychology*, *58*, 250–271.
- Wu, F., Kaiser, E., & Andersen, E. (2012). Animacy effects in Chinese relative clause processing. *Language and Cognitive Processes*, *27*, 1489–1524.
- Yip, V., & Matthews, S. (2000). Syntactic transfer in a Cantonese-English bilingual child. *Bilingualism: Language and Cognition*, *3*, 193–208.
- Yip, V., & Matthews, S. (2007). Relative clauses in Cantonese-English bilingual children: typological challenges and processing motivations. *Studies in Second Language Acquisition*, *29*, 277–300.
- Yun, J., Chen, Z., Hunter, T., Whitman, J., & Hale, J. (2015). Uncertainty in processing relative clauses across East Asian languages. *Journal of East Asian Linguistics*, *24*, 113–148.
- Zhou, J. (2001). *Pragmatic development of Mandarin speaking young children: From 14 months to 32 months* (Unpublished doctoral dissertation, University of Hong Kong).
- Zubin, D. (1979). Discourse function of morphology: The focus system in German. In T. Givon (Ed.), *Syntax and semantics: Discourse and syntax* (Vol. 12, pp. 469–504). New York: Academic Press.

Appendix A Test Sentences

English Test Sentences

Subject RCs

1. Where is the horse that is hugging the pig?
2. Where is the monkey that is feeding the dog?
3. Where is the duck that is pushing the mouse?
4. Where is the rabbit that is feeding the chicken?
5. Where is the giraffe that is hugging the lion?
6. Where is the lion that is pushing the bear?
7. Where is the pig that is feeding the horse?
8. Where is the chicken that is pushing the rabbit?
9. Where is the dog that is hugging the pig?
10. Where is the giraffe that is feeding the lion?

11. Where is the monkey that is hugging the cow?
12. Where is the dog that is pushing the monkey?
13. Where is the mouse that is kissing the chicken?
14. Where is the elephant that is kissing the tiger?
15. Where is the rabbit that is kissing the sheep?
16. Where is the lion that is kissing the bear?

Object RCs

1. Where is the rabbit that the sheep is pushing?
2. Where is the cat that the duck is feeding?
3. Where is the sheep that the cat is hugging?
4. Where is the tiger that the horse is pushing?
5. Where is the elephant that the bear is feeding?
6. Where is the cow that the giraffe is hugging?
7. Where is the mouse that the chicken is hugging?
8. Where is the giraffe that the cow is feeding?
9. Where is the tiger that the elephant is hugging?
10. Where is the bear that the elephant is pushing?
11. Where is the cat that the duck is pushing?
12. Where is the sheep that the cat is feeding?
13. Where is the dog that the pig is kissing?
14. Where is the cow that the monkey is kissing?
15. Where is the mouse that the duck is kissing?
16. Where is the horse that the tiger is kissing?

Mandarin Test Sentences (With Translation)

Subject RCs

- | | |
|----------------------|-------------------------------------|
| 1. 抱/小猪/的/小马/在/哪里? | Hugging/pig/RL/horse/is/where? |
| 2. 推/老鼠/的/小鸭/在/哪里? | Pushing/mouse/RL/duck/is/where? |
| 3. 喂/小狗/的/猴子/在/哪里? | Feeding/dog/RL/monkey/is/where? |
| 4. 亲/公鸡/的/老鼠/在/哪里? | Kissing/chicken/RL/mouse/is/where? |
| 5. 亲/老虎/的/小象/在/哪里? | Kissing/tiger/RL/elephant/is/where? |
| 6. 抱/狮子/的/长颈鹿/在/哪里? | Hugging/lion/RL/giraffe/is/where? |
| 7. 喂/公鸡/的/小兔/在/哪里? | Feeding/chicken/RL/rabbit/is/where? |
| 8. 推/小熊/的/狮子/在/哪里? | Pushing/bear/RL/lion/is/where? |
| 9. 喂/小马/的/小猪/在/哪里? | Feeding/horse/RL/pig/is/where? |
| 10. 抱/小猪/的/小狗/在/哪里? | Hugging/pig/RL/dog/is/where? |
| 11. 推/小兔/的/公鸡/在/哪里? | Pushing/rabbit/RL/chicken/is/where? |
| 12. 亲/小羊/的/兔子/在/哪里? | Kissing/sheep/RL/rabbit/is/where? |
| 13. 抱/小牛/的/猴子/在/哪里? | Hugging/cow/RL/monkey/is/where? |
| 14. 喂/狮子/的/长颈鹿/在/哪里? | Feeding/lion/RL/giraffe/is/where? |
| 15. 推/猴子/的/小狗/在/哪里? | Pushing/monkey/RL/dog/is/where? |
| 16. 亲/小熊/的/狮子/在/哪里? | Kissing/bear/RL/lion/is/where? |

Object RCs

- | | |
|--------------------|-----------------------------------|
| 1. 小羊/推/的/小兔/在/哪里? | Sheep/pushing/RL/rabbit/is/where? |
| 2. 小鸭/喂/的/小猫/在/哪里? | Duck/feeding/RL/cat/is/where? |
| 3. 小猪/亲/的/小狗/在/哪里? | Pig/kissing/RL/dog/is/where? |
| 4. 小猫/抱/的/小羊/在/哪里? | Cat/hugging/RL/sheep/is/where? |
| 5. 小马/推/的/老虎/在/哪里? | Horse/pushing/RL/lion/is/where? |

(Continued)

- | | |
|----------------------|-------------------------------------|
| 6. 长颈鹿/抱的/小牛/在/哪里 ? | Giraffe/hugging/RL/cow/is/where? |
| 7. 猴子/亲的/小牛/在/哪里 ? | Monkey/kissing/RL/cow/is/where? |
| 8. 小熊/喂的/小象/在/哪里 ? | Bear/feeding/RL/elephant/is/where? |
| 9. 公鸡/抱的/老鼠/在/哪里 ? | Chicken/hugging/RL/mouse/is/where? |
| 10. 小象/推的/小熊/在/哪里 ? | Elephant/pushing/RL/bear/is/where? |
| 11. 小牛/喂的/长颈鹿/在/哪里 ? | Cow/feeding/RL/giraffe/is/where? |
| 12. 小鸭/亲的/老鼠/在/哪里 ? | Duck/kissing/RL/mouse/is/where? |
| 13. 小猫/喂的/小羊/在/哪里 ? | Cat/feeding/RL/sheep/is/where? |
| 14. 小象/抱的/老虎/在/哪里 ? | Elephant/hugging/RL/tiger/is/where? |
| 15. 老虎/亲的/小马/在/哪里 ? | Tiger/kissing/RL/horse/is/where? |
| 16. 小鸭/推的/小猫/在/哪里 ? | Duck/pushing/RL/cat/is/where? |

Appendix B

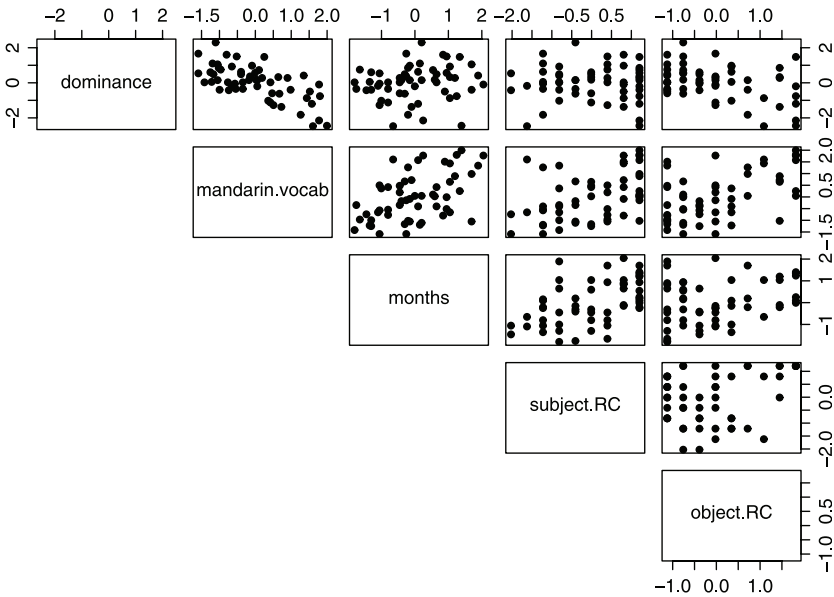


Figure B.1. Scatter plots depicting relationships between z-normalized measures of dominance, Mandarin vocabulary, object RC accuracy, subject RC accuracy, and age (in months) for the bilingual children ($N = 55$).

Cite this article: Tsoi EYL, Yang W, Chan A, and Kidd E (2019). Mandarin–English speaking bilingual and Mandarin speaking monolingual children’s comprehension of relative clauses. *Applied Psycholinguistics* 40, 933–964. <https://doi.org/10.1017/S0142716419000079>